

**NEW GOLD RAINY RIVER MINE  
APPENDIX P  
CULTURAL HERITAGE RESOURCE  
PROJECT**

**2023 PHOTO UPDATES TO  
CULTURAL HERITAGE PROJECT COMPLETION REPORT  
EXISTING CONDITIONS (2013 AND 2019)**

**CULTURAL HERITAGE LANDSCAPES AND  
BUILT HERITAGE RESOURCES  
NEW GOLD INC. RAINY RIVER PROJECT**

**TOWNSHIP OF CHAPPLE  
(GEOGRAPHIC TOWNSHIP OF CHAPPLE &  
TOWNSHIP OF MORLEY)  
DISTRICT OF RAINY RIVER, ONTARIO**

**August 2023**

**Prepared by:  
Ginger Bragg, New Gold Inc. Rainy River Mine**

**newgold<sup>TM</sup> Rainy River**



## Table of Contents

Table of Contents .....	3
List of Figures .....	4
List of Site Photographs .....	4
1.0 Introduction .....	1
1.1 Project Description .....	1
1.2 Report Methodology .....	2
2.0 Summary of the New Gold Inc. Rainy River Project .....	2
2.1 Cultural Heritage Assessment Report (CHAR) .....	2
2.2 Cultural Heritage Evaluation and Documentation Reports .....	4
3.0 Changes to the Existing site Conditions .....	4
3.1 Introduction .....	4
3.2 Existing Conditions Changes 2013 to 2023 .....	5
SOURCES .....	28
Maps .....	28
Contacts .....	28



## List of Figures

Figure 1. Project Location, Rainy River Mine, District of Rainy River [New Gold, Rainy River, April 2019]. .....	1
Figure 2. Site 5: Secondary Highway 600 Relocation Plan.....	6
Figure 3. Aerial photograph locating the identified Cultural Heritage Sites at the New Gold, Rainy River Mine by site number [New Gold, 2018]. .....	7

## List of Site Photographs

Site 1: Rural Landscape .....	8
Site 2: Plan of Survey Tait Township.....	9
Site 3: Plan of Survey Richardson Township.....	9
Site 4: Plan of Survey Sifton Township .....	9
Site 5: Secondary Highway 600.....	10
Site 6: Blackhawk .....	11
Site 7: Angus McRae Farm (Alwine Teeple Farm), 2923 Tait Road .....	12
Site 8: John McCarthy Farm (Dan Teeple Farm), 2635 Tait Road.....	13
Site 9: David Hughes Farm, Sheppard Road .....	14
Site 10: Judson Neville Farm (Doug Teeple Farm), 1006 Teeple Road.....	15
Site 11: William Wilson Farm, 116 Roen Road .....	16
Site 12: Residence, 365 Roen Road.....	17
Site 13: Charles Roen Farm, 414 Roen Road (Residence below, Barn following) .....	18
Site 14: Residence, 614 Roen Road.....	20
Site 15: Richardson Trail .....	21
Site 16: Dearlock .....	22
Site 17: Clarence Haney Farm, 3175 Secondary Highway 600 .....	23
Site 18: Grennier Farm, 3226 Secondary Highway 600 .....	24
Site 19: Oliver Rondeau Farm, 3522 Secondary Highway 600 .....	25
Site 20: Leblanc Farm, 3221 Secondary Highway 600 .....	26
Site 21: George Haney Farm, 3443 Secondary Highway 600 .....	27

## 1.0 Introduction

### 1.1 Project Description

New Gold Inc. Rainy River Mine retained Unterman McPhail Associates, Heritage Resource Management Consultants (UMCA), to undertake a Cultural Heritage Resource Project Completion Report requested by the Ministry of Tourism, Culture and Sport (MTCS). This report is a final review of the existing cultural heritage resource conditions before and after the construction and opening of the Rainy River Mine in 2018. The content of this report was developed in consultation with the MTCS and New Gold Inc. Rainy River Mine and fulfills the final requirement of the MTCS in order to complete the cultural heritage component for the project. In following years during mine operation and reclamation phases New Gold Inc. will prepare a monitoring report update to confirm and document changes to cultural heritage resources and cultural heritage landscapes conditions. The update will include photographs of the resources where change occurs.

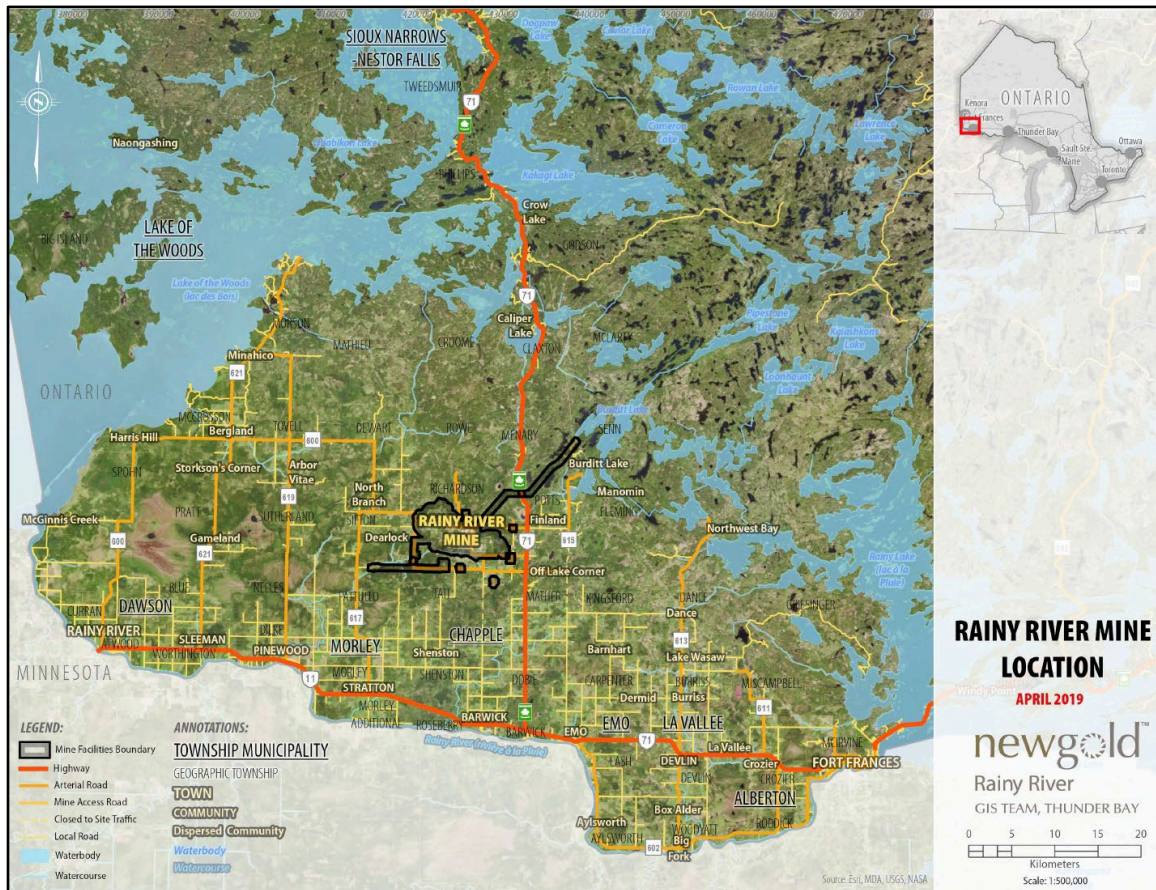


Figure 1. Project Location, Rainy River Mine, District of Rainy River [New Gold, Rainy River, April 2019].

The Rainy River Mine is located primarily on private lands approximately 65 km northwest of Fort Frances in the District of Rainy River (**Figure 1**). In total, the Rainy River Project property comprises approximately 5,000 hectares in the Township of Chapple (geographic Townships of Tait, Mather, Richardson and Potts), Township of Morley (geographic Township of Sifton) and the Unorganized Rainy River District (geographic Townships of Fleming, Menary, Senn). The subject mine site is more limited in scope and lies to the west of Highway 71, in proximity to Highway 600. It encompasses portions of Concession 1, 2, 3 and 4 of the geographic Township of Richardson, now within the boundaries of the Township of Chapple. There is approximately 25% unpatented land located within the original study area; however, cultural heritage resources were not identified on those lands.

## 1.2 Report Methodology

This Cultural Heritage Resource 2023 Project Photo Updates to Completion Report Existing Conditions 2013 and 2019 includes an introduction, summary of the project background and a location map and digital photographs of the twenty-one (21) identified cultural heritage resources description illustrating the change in the existing conditions of the mine site from 2013 to 2023. New Gold Inc. Rainy River provided all 2023 site photographs.

## 2.0 Summary of the New Gold Inc. Rainy River Project

UMcA completed cultural heritage resource study reports in support of the two phases of the development of the Rainy River Mine and the Completion Report Existing Conditions (2013 and 2019).

### 2.1 Cultural Heritage Assessment Report (CHAR)

A Cultural Heritage Assessment Report (CHAR) was prepared in 2013 as part of the phase one of the Environmental Assessment (EA) for the Rainy River Gold Project (RRGP). The RRGp was a proposed open pit and underground gold mine along with related facilities and infrastructure to be developed by Rainy River Resources, now New Gold Inc. The existing mine operation is multifaceted and includes the following main components:

- Open pit and underground mine;
- Ore processing plant;
- Maintenance shop, warehouse and administration complex;
- Construction and possible operations accommodation complexes;
- Explosives manufacturing and storage facilities;
- Stockpiles of overburden, ore and mine rock;
- Aggregates extraction;
- Tailings management;
- Onsite access roads and pipelines, power infrastructure and fuel storage facilities;
- Domestic and industrial waste handling;

- Water management facilities, drainage works and watercourse diversions;
- Diesel generation of between one and five megawatts of power;
- Re-alignment of a section of Highway 600 including a new bridge over the Pinewood River; and
- 230 kV transmission line, approximately 20 km in length.

The CHAR included the following components:

- an historical summary of the development of the study area through the review of both primary and secondary sources as well as historical mapping;
- the results of a field survey of the cultural heritage landscapes and built heritage resources found within the study area;
- identification of cultural heritage landscapes and built heritage resources within the study area through the analysis of major historical themes and activities, historic mapping and site review activities;
- the identification of sensitivities for change;
- impacts assessment; and
- general mitigation recommendations respecting the proposed endeavor.

The CHAR identified a total of twenty-one (21) impacts with respect to identified cultural heritage resources including six (6) direct impacts and fifteen (15) potential direct impacts with respect to cultural heritage resources. It was determined some areas of agricultural landscape would be displaced in the areas where extraction and mining operations were to occur and other areas of the agricultural landscape would be the recipients of indirect impacts due to the introduction of the open pit and underground mine. For the most part, the identified indirect impacts were considered to be low impact, not site specific, and of a long-term in duration.

The identified direct impacts, which were considered to be high impact, generally site specific, and of long-term duration included:

- Site 1: Rural Landscape, Agricultural;
- Site 10: 1006 Teeple Road;
- Site 11: 116 Roen Road;
- Site 12: 365 Roen Road;
- Site 13: 414 Roen Road; and
- Site 14: 614 Roen Road.

The indirect impacts sites, which were generally considered to be of low impact, included:

- Site 1: Rural Landscape, Agricultural;
- Site 2: Plan of Survey Tait Township;
- Site 3: Plan of Survey Richardson Township;
- Site 4: Plan of Survey Sifton Township;
- Site 5: Secondary Highway 600;
- Site 6: Black Hawk;

- Site 7: 2923 Tait Road;
- Site 8: 2635 Tait Road;
- Site 9: Hughes Farm, Sheppard Road;
- Site 16; Dearlock;
- Site 17: 3175 Secondary Highway 600;
- Site 18: 3226 Secondary Highway 600;
- Site 19: 3522 Secondary Highway 600;
- Site 20: 3221 Secondary Highway 600; and
- Site 21: 3443 Secondary Highway 600.

No direct or indirect impacts were assessed for Site 15: Richardson Trail.

The CHAR recommended a combined Cultural Heritage Evaluation Report (CHER) and Cultural Heritage Documentation Report (CHDR) be prepared as part of EA process for two former farm complexes within the study project area, namely, at 116 Roen Road and 414 Roen Road.

## 2.2 Cultural Heritage Evaluation and Documentation Reports

To fulfill the mitigation recommendation of the CHAR, UMCA completed the *Cultural Heritage Evaluation Report and Documentation Report, Rainy River Project, Environmental Assessment, 116 Roen Road (South Part Lot 4, Concession 2, Geographic Township of Richardson), Township of Chapple, District of Rainy River, Ontario* in September 2014 and the *Cultural Heritage Evaluation Report and Documentation Report, Rainy River Project, Environmental Assessment, 414 Roen Road (South Part Lot 5, Concession 3, Geographic Township of Richardson), Township of Chapple, District of Rainy River, Ontario* in October 2014.

It was determined through the application of the “Criteria for Determining Cultural Heritage Value or Interest” under ‘Ontario Regulation 9/06’ that the residence located at 116 Roen Road and the residence located at 414 Roen Road in the Town of Chapple are of cultural heritage value or interest, primarily due to its historical or associative value and contextual value. A Statement of Cultural Heritage Value or Interest (SCHVI) was prepared for each property.

## 3.0 Changes to the Existing site Conditions

### 3.1 Introduction

The New Gold Inc. Rainy River Mine is now in operation and change to the former project study area for the CHAR has occurred. The Rainy River Mine commenced processing ore on September 14, 2017, and completed its first gold pour on October 4, 2017. Commercial production was achieved on October 20, 2017. Development of the underground mine began in the second half

of 2018. The projected life of the Rainy River Mine extends through 2032 based on current mineral reserves and throughput levels.

Consultation with the MTCS regarding the New Gold Rainy River Mine in 2018 resulted in the request for the preparation of an existing condition review to illustrate the cultural heritage resources identified within the study area in 2013 and the physical changes that have occurred to the identified cultural heritage resources within the study area in the post development conditions of 2018. This report was completed in 2019 by Unterman McPhail Associates, *Cultural Heritage Project Completion Report Existing Conditions (2013 and 2019)*. The current report reflects the changes between 2013 and 2023.

### 3.2 Existing Conditions Changes 2013 to 2023

The locations of the identified twenty-one (21) cultural heritage sites located at the New Gold, Rainy River Mine site are shown by site number in **Figure 3**. The change in the existing condition from 2013 to 2023 of each of the identified sites is shown through selected photographs, an aerial photograph, or an historic map. Where previously identified cultural heritage resources in the CHAR remain unchanged or are located outside of lands owned by New Gold Inc. and are not affected, an updated image is not supplied. The sites are:

- Site 1: Rural Landscape, Agricultural;
- Site 2: Plan of Survey Tait Township; Plan of Survey Richardson Township; and Plan of Survey Sifton Township;
- Site 3: Secondary Highway 600;
- Site 4: Black Hawk;
- Site 5: 2923 Tait Road;
- Site 6: 2635 Tait Road;
- Site 9: Hughes Farm, Sheppard Road;
- Site 10: 1006 Teeple Road;
- Site 11: 116 Roen Road;
- Site 12: 365 Roen Road;
- Site 13: 414 Roen Road;
- Site 14: 614 Roen Road;
- Site 15: Richardson Trail;
- Site 16: Dearlock;
- Site 17: 3175 Secondary Highway 600;
- Site 18: 3226 Secondary Highway 600;
- Site 19: 3522 Secondary Highway 600;
- Site 20: 3221 Secondary Highway 600; and
- Site 21: 3443 Secondary Highway 600.

Highway 600 was relocated as part of the mine development and is shown in Figure 2, also previously provided for the 2019 existing condition.



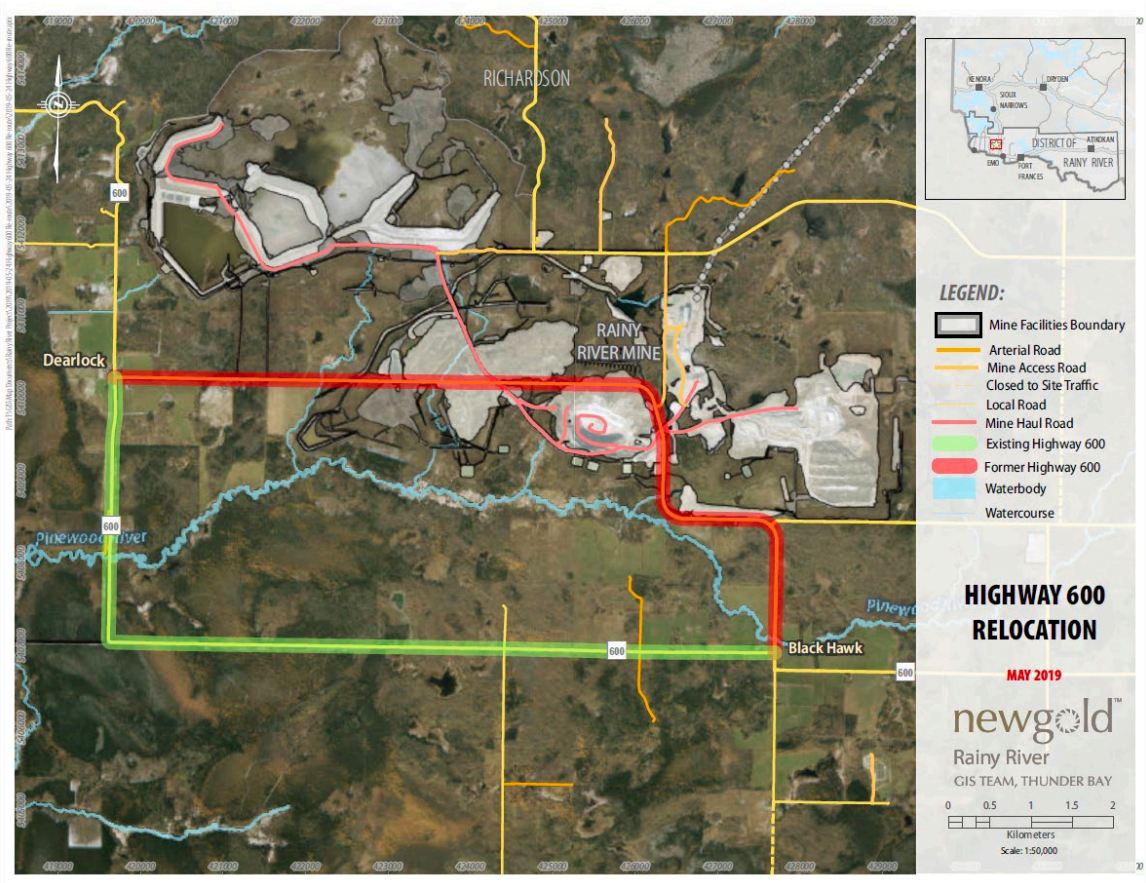


Figure 2. Site 5: Secondary Highway 600 Relocation Plan



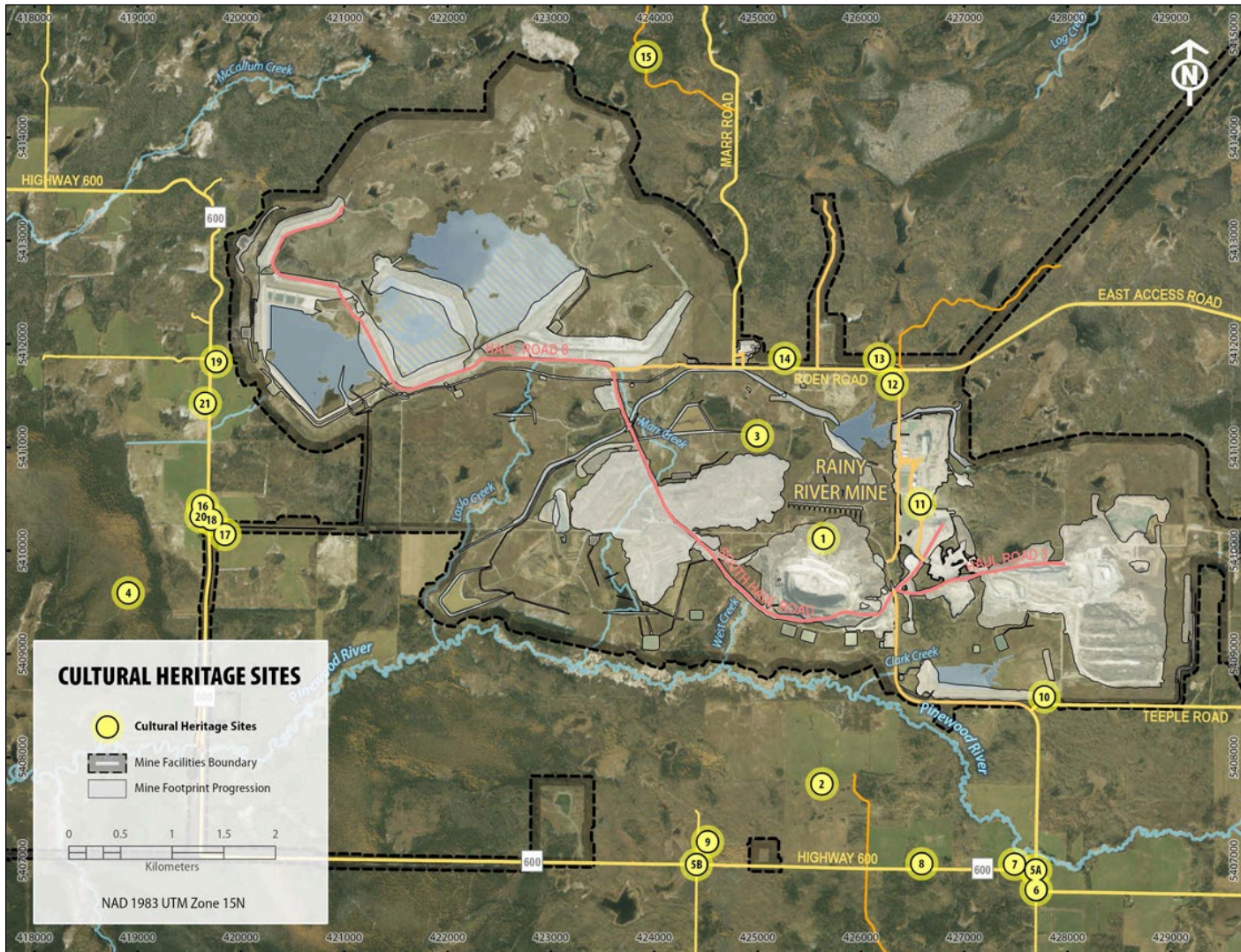
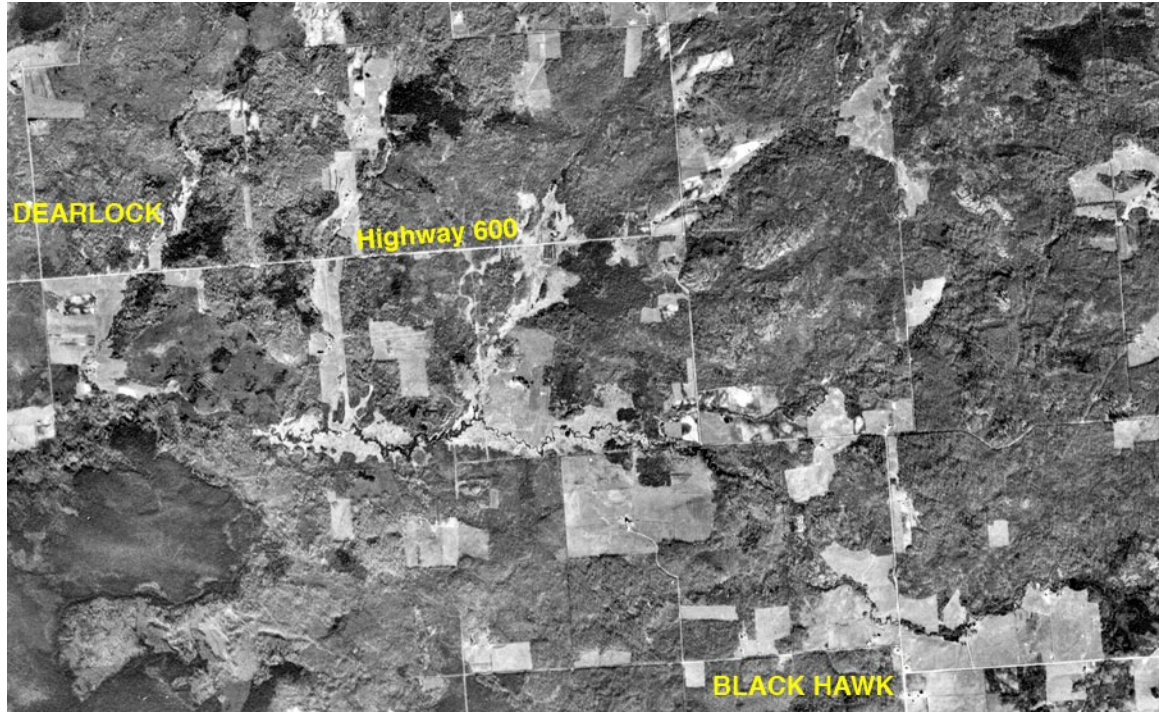


Figure 3. Aerial photograph locating the identified Cultural Heritage Sites at the New Gold, Rainy River Mine by site number [New Gold, 2018].



Site 1: Rural Landscape



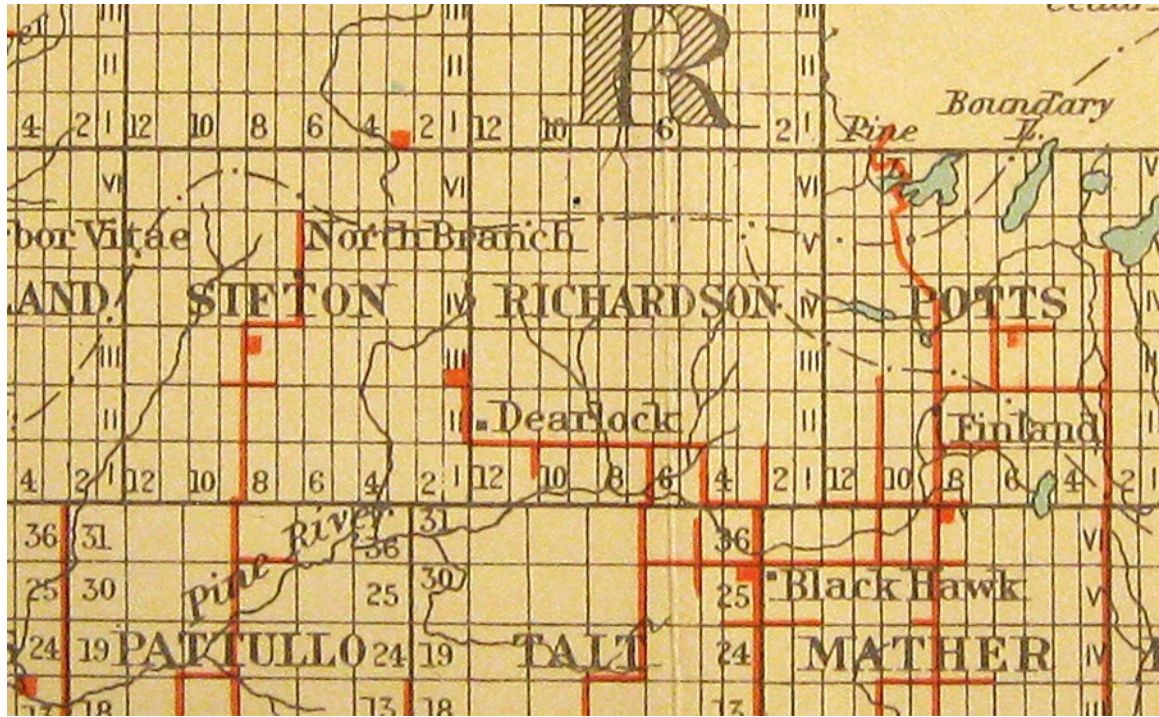
Aerial photograph, October 23, 1952 [NAPL, A13564-32].



August 2023.



Site 2: Plan of Survey Tait Township  
Site 3: Plan of Survey Richardson Township  
Site 4: Plan of Survey Sifton Township



Map, 1929 [Department of Lands and Forests: Map No. 24a, Districts of Rainy River and Kenora].

Updated photographs not required.

Site 5: Secondary Highway 600



May 2013



September 2018. Portion of Highway 600 has been re-routed as per the Mine Plan.



Site 6: Blackhawk



**May 2013.**

**2018 photographs not required.**

Site 7: Angus McRae Farm (Alwine Teeple Farm), 2923 Tait Road



May 2013.



September 2018. (2023 photo update not required; the farm is not owned by New Gold.)



Site 8: John McCarthy Farm (Dan Teeple Farm), 2635 Tait Road



May 2013.



August 2023.



Site 9: David Hughes Farm, Sheppard Road



May 2013.



August 2023.



Site 10: Judson Neville Farm (Doug Teeple Farm), 1006 Teeple Road



**May 2013.**



**August 2023. House is standing but outbuildings have been removed.**



Site 11: William Wilson Farm, 116 Roen Road



**May 2013.**



**August 2023. Plant site area, all buildings have been removed.**



Site 12: Residence, 365 Roen Road



**May 2013.**



**August 2023.**



Site 13: Charles Roen Farm, 414 Roen Road (Residence below, Barn following)



**May 2013. Residence.**



**August 2023. Residence.**



Site 13 (cont'd): Charles Roen Farm, 414 Roen Road (Barn)



**May 2013. Barn.**



**August 2023. Barn.**



Site 14: Residence, 614 Roen Road



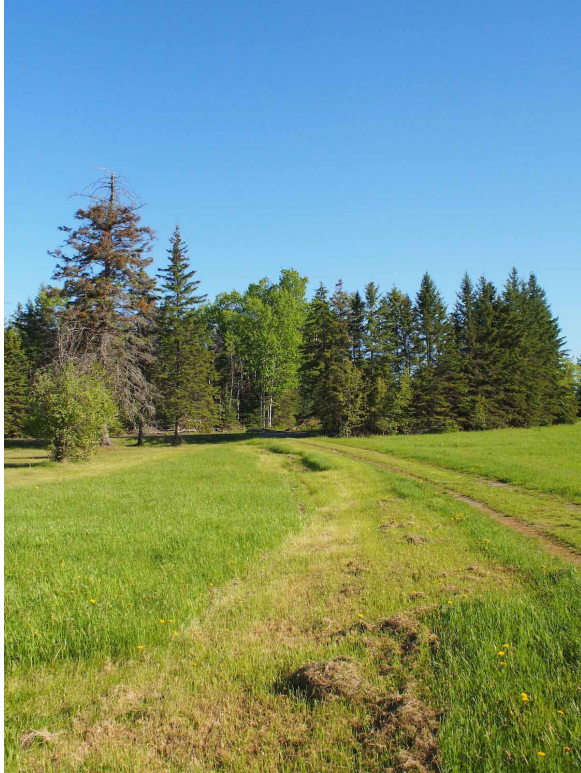
May 2013.



August 2023.



Site 15: Richardson Trail



**May 2013.**



**August 2023.**

Site 16: Dearlock



**May 2013.**

**Updated photographs not required.**



Site 17: Clarence Haney Farm, 3175 Secondary Highway 600



**May 2013.**



**August 2023.**



Site 18: Grennier Farm, 3226 Secondary Highway 600



May 2013.



August 2023.



Site 19: Oliver Rondeau Farm, 3522 Secondary Highway 600



May 2013.



August 2023.



Site 20: Leblanc Farm, 3221 Secondary Highway 600



**May 2013.**



**September 2018.**

Site 21: George Haney Farm, 3443 Secondary Highway 600



**May 2013.**

**An updated photo in 2023 is not required, New Gold Inc. Rainy River Mine does not own the property.**

## SOURCES

Unterman McPhail Associates. *Cultural Heritage Completion Report Existing Conditions (2013 and 2019), Cultural Heritage Landscapes & Built Heritage Resources Township of Chapple (Geographic Township of Chapple & Township of Morley), District of Rainy River, Ontario*. April 2019, Rev. August 2019.

Unterman McPhail Associates. *Cultural Heritage Assessment Report, Cultural Heritage Landscapes & Built Heritage Resources (Geographic Township of Chapple & Township of Morley), Rainy River Gold, Environmental Assessment, Township of Chapple, District of Rainy River, Ontario*. October 2013.

Unterman McPhail Associates. *Cultural Heritage Evaluation Report and Documentation Report, Rainy River Project, Environmental Assessment, 116 Roen Road (South Part Lot 4, Concession 2, Geographic Township of Richardson), Township of Chapple, District of Rainy River, Ontario*. September 2014.

Unterman McPhail Associates. *Cultural Heritage Evaluation Report and Documentation Report, Rainy River Project, Environmental Assessment, 414 Roen Road (South Part Lot 5, Concession 3, Geographic Township of Richardson), Township of Chapple, District of Rainy River, Ontario*. October 2014.

### Maps

National Air Photo Library (NAPL):  
A13564-32. October 23, 1952

Department of Lands and Forests (DL&F):  
Map No. 24a, Districts of Rainy River and Kenora. 1929.

New Gold. Aerial Photograph, 2018.

New Gold Rainy River. Rainy River Mine Location. April 2019.

### Contacts

Ginger Bragg, Community Supervisor, New Gold Inc., Rainy River.