



RAINY RIVER PROJECT
ENVIRONMENTAL ASSESSMENT ANNUAL COMPLIANCE REPORT FOR 2015 (V1P)
(REPORTING PERIOD March 31, 2015 to December 31, 2015)

**PER PROVINCIAL ENVIRONMENTAL ASSESSMENT
NOTICE OF APPROVAL CONDITION 5
EA 05-09-02 / EAIMS 13102**

**VERSION 1
REVISION 2**

Date	Revision #	Revision(s)	Originator
March 31, 2016	Version 1	Issued to NG	SD, AMEC Foster Wheeler
September 16, 2016	Revision 1	Issued to MOECC	DM, New Gold
November 8, 2016	Revision 2	Issued to MOECC	DM, New Gold

Principal Contact: Darrell Martindale, Environmental Manager
Rainy River Project
5967 Highway 11/71
P.O. Box 5
Emo, Ontario, Canada P0W IE0
Telephone: (807) 707-3497
E-mail: Darrell.Martindale@newgold.com

and Stacey Jack, Manager – Community Relations
Rainy River Project
5967 Highway 11/71
P.O. Box 5
Emo, Ontario, Canada P0W IE0
Telephone: (807) 482-2501
E-mail: Stacey.Jack@newgold.com

TABLE OF CONTENTS

	PAGE
1.0 PROJECT UPDATE	1
1.1 Construction	1
1.2 Operations	2
1.3 Health and Safety.....	2
1.4 Community.....	3
1.5 Human Resources	4
2.0 REGULATORY UPDATE	5
3.0 ANNUAL EA COMPLIANCE REPORT REQUIREMENTS.....	9
3.1 Regulatory Background.....	9
3.2 Report Content Requirements.....	10
3.3 Notice of Approval Registry	10
3.4 Commitments Registry	10
3.5 Follow Up Monitoring Plan Registry.....	10

LIST OF TABLES

	PAGE
Table 1: Environmental Approvals Received during 2015	6

LIST OF APPENDICES

- A Photographs
- B Provincial Notice of Approval Registry
- C Commitments Registry
- D Follow Up Program Registry
- E Public Consultation Table

1.0 PROJECT UPDATE

New Gold Inc. (New Gold) is currently constructing the Rainy River Project (RRP), and plans to operate and eventually reclaim this new open pit and underground gold mine. Physical works related to the RRP will consist primarily of:

- Open pit;
- Underground mine;
- Overburden, mine rock and low grade ore stockpiles;
- Primary crusher and process plant;
- Tailings management area;
- 230 kilovolt transmission line;
- Relocation of a portion of gravel-surfaced Highway 600; and
- Associated buildings, facilities and infrastructure, supported by related piping and power infrastructure as needed.

Construction of the RRP began in early spring 2015 after the Environmental Assessment (EA) process was complete, the Closure Plan was filed and environmental approvals necessary for the work proposed were obtained.

The subsections that follow provide an overview of the activities conducted onsite during 2015. Photographs are provided in Appendix A.

1.1 Construction

- Overall construction progress was 21%.
- Site earthworks (New Gold work package CC003) progressed to 86% complete by year end.
- Concrete placement was on target at 42% complete versus a plan of 43%. Lean mix placed to date is 5,273 m³ and structural concrete placed to date is 8,648 m³. Approximately one-third (22 of 72) of the precast footings have now been placed in the process building.
- Structural steel erection was completed to Gridline 23 with one truss and the end wall remaining to complete the main structural shell of the building. Cladding commenced on the north east side of the grinding building at year end. Overall completion was 13%.
- Pinewood River pipeline progressed to 18%. Fusing of pipe was substantially complete by year end. Started digging trench to bury pipeline on the Highway 600 right of way.

- Earthworks progressed on various elements of the permanent water management infrastructure at the RRP site during 2015, with Dams 2 and 5 of the Water Management Pond nearing completion at year-end. The status of the Earthworks Packages was as follows:
 - CC116-1 east earthworks 30% complete (Clark Creek Dam, Teeple Road Dam, Interim Mine Rock Pond and Mine Rock Pond);
 - CC116-2 north earthworks 67% complete (West Creek Pond Dam, West Creek Diversion Channel); and
 - CC116-3 west earthworks phase 1 and 2, 47% complete (Water Management Pond Dam and West Tailings Management Area). In December a crack is identified in the top of Dam 5 resulting in issuance of a Stop Work Order issued by the Ministry of Natural Resources and Forestry in January 2016 until further geotechnical review could be conducted. Updated information will be included in
- Highway 600 and the East Access Road were both opened to traffic in late December. Final surfacing, drainage works and site clean-up to be completed in 2016.

1.2 Operations

- Assembly of initial mine fleet largely complete.
- Exceeded target for mine development material movement by 15% in the fourth quarter of 2015.
- Employee transportation plan developed.
- Temporary assay lab established.
- Warehouse established.

1.3 Health and Safety

- No Lost Time Incidents in 2015.
- 1,265,699 hours worked on the project in 2015.
- Provided Site Health, Safety and Environmental Orientation for more than 2,500 people.
- Initiated Joint Health and Safety Committees for RRP Construction and RRP Operations.
- Began forming and developing the Emergency Response Site Team including regular training and drills.

- Ongoing proactive health and safety measures include: crew talks, field level risk assessments, and safe act observations and interactions.
- Developed critical task procedures (such as for: confined space, working at heights and working under powerlines).

1.4 Community

- Extensive community engagement activities with neighbors, Aboriginal partners, municipalities and various interested members of the public.
- 17 career fairs held in Aboriginal and non-Aboriginal communities.
- Public presentations at various venues including: Women in Mining Symposium in Fort Frances, the Fort Frances Chamber of Commerce and Rainy River District Municipal Association.
- Spring, Summer and Fall newsletters distributed throughout the entire Rainy River District and parts of the Kenora District.
- Neighbours visits, tour and meeting.
- Establishment of a committee for neighbours. This committee met in 2015; the committee will get together and receive project updates and have an opportunity to have face to face discussions with representatives of New Gold.
- Numerous visits to Aboriginal Communities.
- Site tours provided to the Elders and community members of Naicatchewenin, Rainy River and Big Grassy First Nations.
- New Gold is proud to have graduated 11 surface miners from our first training program; Surface Miner Aboriginal Trainee. These graduates come from three local aboriginal communities and had no previous experience in mining.
- Four on-site public ceremonies held in Spring, before clearing activities commenced, before first blast at site and Fall.
- Ground-breaking ceremony and reception with invited guests.
- Mining Matters Program delivered in three local schools in Naotkamegwanning First Nation, Fort Frances High School and Sturgeon Creek Elementary School in Chapple.

- Impact and Benefits Agreement completed with Big Grassy First Nation (January 2015).
- On-going discussions with other First Nation communities including Naotkamegwanning, Ojibways of Onigaming, Big Island and Northwest Angle #37.

New Gold continues to track consultation and engagement activities on an ongoing basis.

1.5 Human Resources

- 165 New Gold team members employed at the RRP in a range of positions, including: surface miners, environmental technicians, heavy equipment operators and miscellaneous support functions. The majority of the team are from the local area.
- 500+ construction team members on site at the end of 2015 working for the numerous contractors who are helping to build the RRP.
- Implementation on an online e-recruit program
- Partnered with various local agencies and institutions to support local training and hiring.

With Aboriginal partners, developed and implemented an Anishinaabe Engagement (cultural awareness) program for all New Gold employees and all on-site contractors.

2.0 REGULATORY UPDATE

Rainy River Resources Ltd., predecessor to New Gold, submitted a Project Description to the Canadian Environmental Assessment Agency (CEA Agency) pursuant to the *Canadian Environmental Assessment Act, 2012*, that was approved on August 31, 2012. On December 18, 2012, Rainy River Resources was informed that a Standard Assessment would be required for the RRP and final Environmental Impact Statement Guidelines were issued by the CEA Agency. In parallel, Rainy River Resources volunteered to be subject to an individual EA for the RRP under the Ontario *Environmental Assessment Act*. The Proposed Terms of Reference as amended, was approved by the Ontario Minister of the Environment on May 15, 2013.

On January 17, 2014, New Gold submitted documentation intended to fulfill the EA requirements as defined by the Provincially-approved Terms of Reference and Federal Environmental Impact Statement Guidelines:

Rainy River Project, Township of Chapple, Final Environmental Assessment Report (Environmental Impact Statement), Version 2. Prepared for Rainy River Resources Ltd. by AMEC Environment & Infrastructure.

A positive Federal EA Decision Statement was issued on January 12, 2015 and a favourable Provincial EA Notice of Approval was released on January 29, 2015.

A number of environmental approval applications were submitted in advance of completion of the EA process. After EA approval and on completion of the necessary regulatory review and consultation, the initial environmental approvals required to start construction were issued (or filed in the case of the Closure Plan) by the regulatory authorities.

Table 1 provides a summary of the environmental approvals related to the RRP received by New Gold during 2015.

Table 1: Environmental Approvals Received during 2015

Agency	Type	Number	Description	Comments
Ontario Ministry of Environment and Climate Change	Permit to Take Water	8776-9W2QN3	Pinewood River	
		7631-9VULMS	Mine Dewatering	
		3638-9VTNRM	Tait Quarry	
		2133-9VUPVZ	Construction Minor Takings	
		1386-9VTP2H	Aggregate Sources (OC3, OC4, Roen)	
		0040-9VUL6B	Tailings Management Area Construction	
	Environmental Compliance Approval	5781-9VJQ2J	Construction Phase / Tait Quarry	
		5178-9TUPD9	Industrial Sewage	
		8567-9ZXG8U	Air / Noise	Superseded
		0412-A2LR4V	Air / Noise	Amended
Ontario Ministry of Natural Resources and Forestry	Work Permit / Letter of Authority <i>(Lakes and Rivers Improvement Act / Public Lands Act)</i>	FF-2015-01	Culverts C2, C6, C8	
		FF-2015-02	West Creek Diversion	
		FF-2015-03	Clark Creek Diversion	
		FF-2015-04	TMA	
		FF-2015-05	Mine Rock Pond	
		FF-2015-07	Pinewood River Intake / Outfall	
		FF-2015-08	Culvert C15	
		FF-11-2015/16	Highway 600 Crossing	
		FF2-2015/16	East Access Road Construction	
		FF6-2016/2016	East Access Road Construction (amendment)	
		FF-11-2015/16	Pinewood River - bridge crossing	
	Endangered Species Act Permit	FF-C-001-14	Permit Under 17(2)(c) (Note: issued during 2014)	
	Aggregate Resources Licence	625851	Tait Quarry	

Ontario Ministry of Natural Resources and Forestry	Forestry Resource Licence	553212, 553213, 553214, 553223, 553224, 553225, 553226, 553227, 553271, 553272	Crown forest resources	
		553037, 553038, 553039	Crown forest resources	Expired March 31, 2015
	Licence to Harvest	B12011, B12013, B12014, B12032, B12033, B12039, B12040, B12052, B12053	Licence to Harvest on Private Land	
		B12008, B12009	Licence to Harvest on Private Land	Expired March 31, 2015
	Authority to Haul	216310, 216366, 216367, 216822, 216823, 216833, 216836, 216838, 216882, 216883, 216884, 216885, 216886, 217018, 217019, 217020, 217021	Authority to Haul	
		216269, 216277, 216278, 216279, 216280	Authority to Haul	Expired March 31, 2015
	Land Use Permit	1134-1003161, 1134-1003162, 1134-1003167	Land Use Permit - Wood Storage	
		1134-1003160, 1134-1003163, 1134-1003164	Land Use Permit - Wood Storage	Expired March 31, 2015
	Other Permits	1079341	Fish Collection Permit - Culvert C3, C7, C8	
		1080070	Fish Collection Permit - Fish Salvage	
		2015-764 / 1081093	Authorization for wildlife interference	
		1079145	Authorization for wildlife interference	
		1081168	Wildlife Scientific Collectors Authorization - Turtle Relocation	

Ontario Ministry of Northern Development and Mines	Closure Plan	-	Filed by Ministry of Northern Development and Mines (February 23, 2015)	
Ontario Ministry of Transportation	Entrance Permit	13+ approvals		
	Encroachment Permit	14+ approvals		
	Land Use	11+ approvals		
Fisheries and Oceans Canada	Authorization	15-HCAA-00039	Section 35(2)	
	Letter of Advice	KE-12-0963	Road Crossings	
Transport Canada	Letter	15-0045	Linear Structure	No objection from NavCan
	Letter	15-0046	Blasting Zone	No objection from NavCan
	Clearance	ATS-15-16-00026521	Transmission Line - Aeronautic Obstruction Clearance	No lighting or marking required

3.0 ANNUAL EA COMPLIANCE REPORT REQUIREMENTS

3.1 Regulatory Background

Condition 2.3 of the Federal EA Decision Statement required that:

- *The Proponent shall submit to the Agency an annual report on the implementation of the conditions set out in this Decision Statement with a supporting analysis for each of the conditions for the preceding calendar year on or before March 31, starting from the commencement of any activities in connection with the carrying out of the Designated Project. Each annual report shall describe how the Proponent has considered and incorporated the factors outlined in condition 2.1 in the implementation of the conditions set out in this Decision Statement.*

Condition 2.5 requires that the report be available on the Proponent website within 30 days of submission to the CEA Agency. This posting will be completed by April 30, 2016. Revision 1 of this document will be posted by October 16, 2016.

Condition 6 of the Provincial Notice of Approval also indicated a requirement for an annual EA compliance report:

- *Condition 6.1: The Proponent shall prepare an annual Compliance Report which describes its compliance with the conditions of approval set out in this Notice of Approval, and which describes the results of the Proponent's Environmental Assessment Compliance Monitoring Program required by Condition 5 of this Notice of Approval.*
- *Condition 6.2: The first annual Compliance Report shall be submitted to the Director, for the public record, within one year from the Start of Construction and shall cover all activities of the previous 12 month period.*

Per an e-mail communication between Mr. Kyle Stanfield, New Gold and Ms Sasha McLeod of the Ministry of Environment and Climate Change on March 2, 2015, the timing of the Provincial EA Compliance Report was aligned with the Federal requirement, and will be due on March 31st each year. Per comments received from MOECC on this ACR, it was agreed each ACR will cover the reporting period of January 1 to December 31, with the exception of this first ACR which covered the period March 31 – December 31, 2015 as well as activities in January and February 2015 related to initial vegetation clearing, as construction began on March 31, 2015 (in accordance with EA condition of approval 6.2). New Gold is committed to completing the report annual within this period.

This report is intended to meet the Provincial, annual EA compliance report requirements.

3.2 Report Content Requirements

In accordance with the Provincial EA Notice of Approval, along with the Compliance Monitoring Plan submitted by New Gold in fulfillment of Condition 5 of the Provincial EA Notice of Approval, this Annual EA Compliance Report contains the following:

- Provincial Notice of Approval Registry;
- Commitments Registry; and
- Follow Up Monitoring Program (FMP) Registry.

This report covers the reporting period January 1, 2015 to December 31, 2015.

3.3 Notice of Approval Registry

Per the Provincial Compliance Management, New Gold committed to maintaining a Notice of Approval Registry that tabulates the conditions of the Notice of Approval and on-going status. The Notice of Approval Registry is to be updated on a regular basis, and no less frequently than annually as part of the project follow up reporting. The updated Provincial Notice of Approval Registry valid to December 31, 2015, is appended to this report in Appendix B.

3.4 Commitments Registry

New Gold made a large number of commitments which were disseminated through the associated EA documentation. New Gold intends to fulfil these commitments as summarized in the Commitments Registry. The registry is intended as a living document and will be amended as needed, to include other mitigation measures / commitments as identified going forward. The registry will be updated on a regular basis, and no less frequently than annually as part of the project follow up reporting. The updated Commitments Registry which tracks completion of EA commitments to December 31, 2015, is provided in Appendix C.

3.5 Follow Up Monitoring Plan Registry

The RRP EA Report / Environmental Impact Statement, Section 13 describes the RRP monitoring plan and environmental management. In accordance with the Code of Practice for Preparing and Reviewing EAs in Ontario, 2014, monitoring is:

... used to verify the expected environmental effects of the undertaking and to determine if any additional impact management measures, or adjustments to any measures, are required. The monitoring framework should consider all phases of the proposed undertaking (for example, planning, detailed design, tendering, construction, operation, closure, decommissioning). This framework must include compliance monitoring and, where appropriate, effects monitoring.

In accordance with *Canadian Environmental Assessment Act, 2012* the purpose of the FMP is to:

Rainy River Project

Environmental Assessment Compliance Report for 2015

,... Verify the accuracy of the environmental assessment of a designated project; and Determine the effectiveness of any mitigation measures.

The FMP applies to the construction, operation, active closure and decommissioning (active closure), and post-closure phases of the RRP, as appropriate. As of December 31, 2015 there was limited follow up monitoring required related to the EA. Additional reporting has been completed as required by the environmental approvals received to date; these reports have been issued to the appropriate regulatory authorities . Appendix D contains a copy of the FMP registry, current to December 31, 2015.

Monitoring details related to the dam construction issues at the Water Management Pond will be provided in the 2016 ACR.

APPENDIX A
PHOTOGRAPHS

APPENDIX A: 2015 PHOTOGRAPHS

Construction meeting (March 13, 2015):



Silt fence installation (April 16, 2015):





Open pit development (December 4, 2015):



newgold™ Rainy River Project

Batch plant (July 2015):



Outcrop 3 Quarry (July 2015):

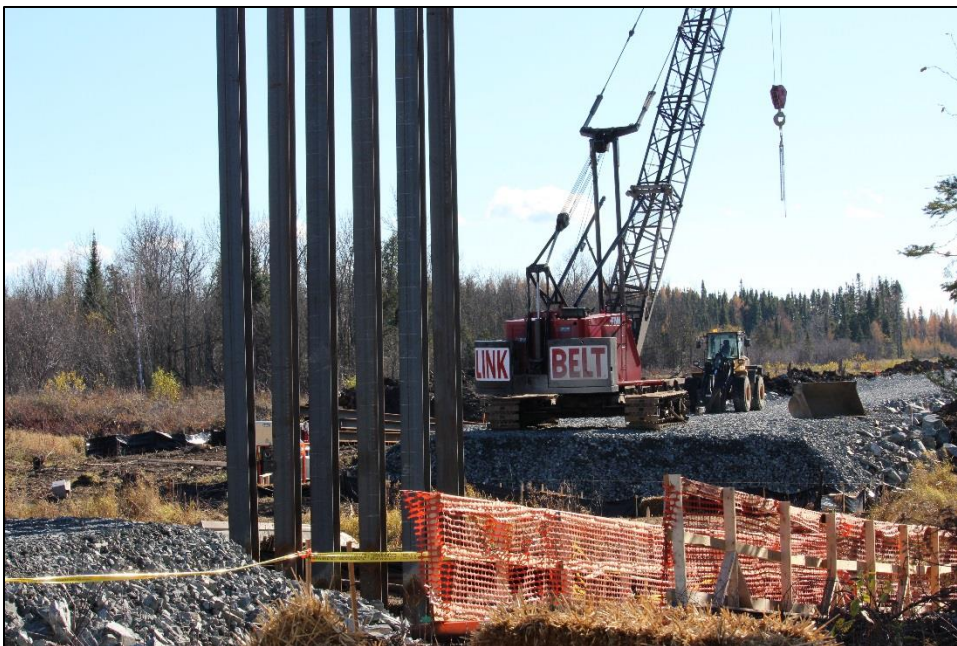


newgold™ Rainy River Project

Plant site (October 24, 2015):



Pinewood River crossing (October 24, 2015):



newgold™ Rainy River Project

Plant site (October 24, 2015):



Plant site (November 25, 2015):



newgold™ Rainy River Project

Plant site (November 23, 2015):



newgoldTM Rainy River Project

Smudging Agreement (January 9, 2015):



Elders tour of fish relocation (June 30, 2015):

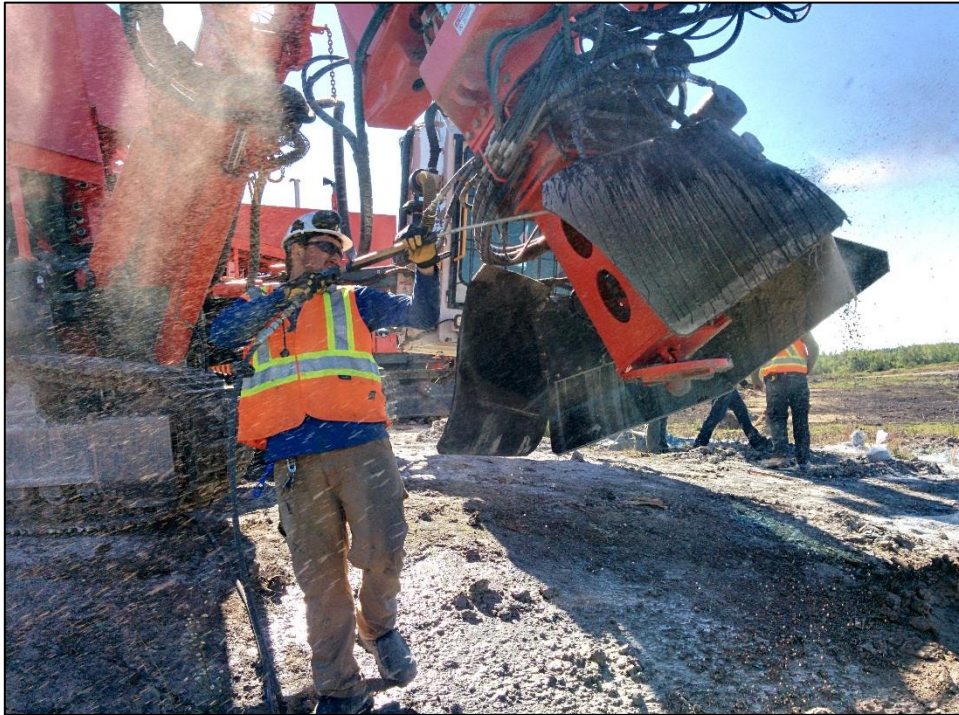


Couchiching Youth Forum (February 3, 2015):



newgold™ Rainy River Project

Surface Mine Aboriginal Trainee (September 9, 2015):



Ceremony Offering (October 6, 2015):



Women in Mining (May 6, 2015):



newgold™ Rainy River Project

Archaeology Day (August 24, 2015):



APPENDIX B

PROVINCIAL NOTICE OF APPROVAL REGISTRY

APPENDIX B: PROVINCIAL EA NOTICE OF APPROVAL REGISTRY

Condition / Tracking #	Description	Status	Date Completed (where applicable)
3.1.	Where a document, plan or report is required to be submitted to the Ministry, the Proponent shall provide two copies of the final document, plan or report to the Director: a copy for filing in the specific public record file maintained for the Undertaking, and a copy for use by Ministry staff	The reporting period for the first annual Compliance Report covered the period from the start of construction (March 31, as well as activities related to initial vegetation clearing that commenced February 2015) to December 31, 2015 and was submitted prior to March 31, 2016. The 2016 annual Compliance Report will cover the period of January 2016 to December 2016 and will be submitted prior to the March 31, 2017 deadline. These dates also coincide with the Federal Annual Reporting Requirements. Hard copies of the reports were sent to the Regional office and digital copies were sent to the Regional and District offices.	March 30, 2016 Sent Via Mail to Regional office. April 1, 2016 sent digital copies as per email request to Region and District offices.
3.2.a	The Proponent shall provide additional copies of the documents required for the public record file to the following for access by the public: Regional Director	Copies of the Annual Compliance Report were sent via courier to the Regional Office in Thunder Bay on March 30, 2016. On April 4, 2016 a request for digital submissions was received by the PTTW Division in Thunder Bay at which time digital copies were sent that day to the Region and District offices	March 30, 2016 Sent Via Mail to Regional office. April 1, 2016 sent digital copies as per email request to Region and District offices.
3.2.b	The Proponent shall provide additional copies of the documents required for the public record file to the following for access by the public: District Manager	Copies of the Annual Compliance Report were sent via courier to the Regional Office in Thunder Bay on March 30, 2016. On April 4, 2016 a request for digital submissions was received by the PTTW Division in Thunder Bay at which time digital copies were sent that day to the Region and District offices	March 30, 2016 Sent Via Mail to Regional office. April 1, 2016 sent digital copies as per email request to Region and District offices.
3.2.c	The Proponent shall provide additional copies of the documents required for the public record file to the following for access by the public: NG Inc. office in Emo, Ontario	Digital copies of the Annual Compliance Report were made available via the New Gold Website on April 1, 2016 via the company website. In addition copies were made available for public access at the Emo office on March 31,2016.	
3.3.	The EAB file number EA 05-09-02 and EAIMS file number 13102 shall be quoted on all documents submitted by the Proponent pursuant to condition 3.1 of this Notice of Approval	Completed to date.	
3.4.	Without detracting from the foregoing Public Record conditions, the proponent may also provide these documents through other means, as considered appropriate by the Proponent	Completed to date.	

APPENDIX B: PROVINCIAL EA NOTICE OF APPROVAL REGISTRY

Condition / Tracking #	Description	Status	Date Completed (where applicable)
4.1.	The Proponent shall post the Errata document dated December 15, 2014 on the Proponent's project website. The Proponent shall update the Summary of the Environmental Assessment Report to reflect the addition of the Errata and to itemize what sections of the Environmental Assessment Report have been impacted by it, and shall post the updated Summary on the website. The Proponent shall update the Table of Contents of the Environmental Assessment Report to reflect that the Errata is included as part of Volume 2 of the Environmental Assessment Report, and shall post the updated Table of Contents on the website.	Completed.	#####
5.1	The Proponent shall prepare and submit to the Director, for the public record, an Environmental Assessment Compliance Monitoring Plan (CMP)	Completed.	February 9, 2015
5.2	The CMP shall be submitted 30 days before the Start of Construction or such other date as agreed to in writing by the Director	Completed.	February 9, 2015
5.3	The CMP shall describe how the Proponent will monitor its fulfilment of: 1) the provisions of the Environmental Assessment pertaining to mitigation measures, public consultation, and additional studies and work to be carried out; 2) all other commitments made by the Proponent during the Environmental Assessment process including the Commitments Registry as contained in the Errata dated December 15, 2014; and 3) the conditions included in this Notice of Approval	Completed.	February 9, 2015
5.4	The CMP must contain an implementation schedule for construction, operations and closure, as well as monitoring during construction, operations and closure.	Completed.	February 9, 2015

APPENDIX B: PROVINCIAL EA NOTICE OF APPROVAL REGISTRY

Condition / Tracking #	Description	Status	Date Completed (where applicable)
5.5	When the Proponent submits the CMP to the Director, the Proponent shall append a statement indicating that the CMP is intended to fulfil condition 5 of this Notice of Approval	Completed.	February 9, 2015
5.6	The Director may require the Proponent to amend the CMP at any time. Should an amendment be required, the Director will notify the Proponent, in writing, of the required amendment and the date by which the Proponent must complete the amendment and submit it to the Director	Not applicable to date.	
5.7	The Proponent shall carry out the CMP, as it may be amended by the Director	Completed to date.	
5.8	The Proponent shall make the documentation pertaining to the CMP available to the Ministry or designate upon request, in a timely manner, when so requested by the Ministry during an on-site inspection, audit, response to a pollution incident report or when information concerning compliance is requested by the Ministry	Not applicable to date.	
6.1	The Proponent shall prepare an annual Compliance Report which describes its compliance with the conditions of approval set out in this Notice of Approval, and which describes the results of the Proponent's Environmental Assessment CMP required by Condition 5 of this Notice of Approval	This table forms part of the Annual Compliance Report for 2015.	
6.2	The first annual Compliance Report shall be submitted to the Director, for the public record, within one year from the Start of Construction and shall cover all activities of the previous 12 month period	The reporting period for the first annual Compliance Report covered the period from the start of construction (March 31, as well as activities related to initial vegetation clearing that commenced February 2015) to December 31, 2015 and was submitted prior to March 31, 2016. The 2016 annual Compliance Report will cover the period of January 2016 to December 2016 and will be submitted prior to the March 31, 2017 deadline. These dates also coincide with the Federal Annual Reporting Requirements.	

APPENDIX B: PROVINCIAL EA NOTICE OF APPROVAL REGISTRY

Condition / Tracking #	Description	Status	Date Completed (where applicable)
6.3	Subsequent Compliance Reports shall be submitted to the Director, for the public record, on or before the anniversary of the Start of Construction each year thereafter. Each Compliance Report shall cover all activities of the previous 12 month period	The reporting period will be Jan 1, 2016 to Dec 31, 2016 and will be submitted by March 31, 2017	
6.4	Once all conditions in this Notice of Approval have been satisfied, or have been incorporated into any other provincial approval, the Proponent shall indicate in its annual Compliance Report that the Compliance Report is its final Compliance Report, and that all conditions in this Notice of Approval have been satisfied. The Director may also vary the time at which the Proponent is to provide its final Compliance Report, and state this in writing to the Proponent	Agreed.	
6.5	The Proponent shall retain either on site or in another location approved by the Director, a copy of each of the annual Compliance Reports and any associated documentation of compliance monitoring activities	The report is posted on the New Gold website (www.newgold.com). Compliance monitoring documents are available on site with the Environment department.	
6.6	The Proponent shall make the Compliance Reports, and associated documentation, available to the Ministry or designate in a timely manner when requested to do so by the Ministry	Agreed.	
7.1	The Proponent shall prepare and implement a Complaint Protocol that sets out how it will deal with and respond to inquiries and complaints received during the design, construction and operation of the Undertaking	Completed.	
7.2	The Proponent shall submit the Complaint Protocol to the Director, for the public record, 30 days before the Start of Construction or such other date as agreed to in writing by the Director	Completed.	February 2, 2015

APPENDIX B: PROVINCIAL EA NOTICE OF APPROVAL REGISTRY

Condition / Tracking #	Description	Status	Date Completed (where applicable)
7.3	The Director may require the Proponent to amend the Complaint Protocol at any time. If an amendment is required, the Director will notify the Proponent in writing of the required amendment and the date by which the Proponent must complete the amendment and submit it to the Director	Not applicable to date.	
7.4	The Proponent shall carry out the Complaint Protocol, as it may be amended by the Director	In 2015, New Gold Rainy River Project received 50 complaints. Of these 50 complaints, the majority were related to issues with Project traffic on public roads (dust from increased traffic, travelling faster than the speed limit) and noise/vibration complaints. Issues were addressed as per the complaint protocol (external feedback management plan); complaints in these categories have decreased as the team continues to ensure solutions are implemented.	15-Sep-16
8.1.a	The Proponent shall prepare and implement a Community Communications Plan that sets forth: - How the Proponent plans to disseminate information to interested persons	Completed.	February 9, 2015
8.1.b	The Proponent shall prepare and implement a Community Communications Plan that sets forth: - How interested persons will be notified and kept informed about site operations	Completed.	February 9, 2015
8.1.c	The Proponent shall prepare and implement a Community Communications Plan that sets forth: - The procedures for keeping interested persons apprised of information about documents related to the Undertaking, and when and how the updated information and/or documents will be made available	Completed.	February 9, 2015
8.2	The Proponent shall submit a Community Communications Plan to the Director 30 days before the Start of Construction or such other date as agreed to in writing by the Director	Completed.	February 9, 2015

APPENDIX B: PROVINCIAL EA NOTICE OF APPROVAL REGISTRY

Condition / Tracking #	Description	Status	Date Completed (where applicable)
8.3	The Proponent shall implement the Community Communications Plan during construction, operations and closure of the Undertaking	Completed to date.	
9.1.a	The Proponent shall prepare and implement an Aboriginal Consultation Plan that sets forth: - How, during the detailed design and implementation of the Undertaking, the Proponent will consult with the Aboriginal communities that were notified of the Undertaking during the Environmental Assessment process	Completed. A draft plan was submitted on January 21, 2015. Following up on the e-mail submitted on February 13, NG noted that the MOECC has no additional comments on the Aboriginal Consultation Plan stipulated in Condition 9 of the Provincial EA decision for the RRP. A copy of the plan was provided.	February 13, 2015
9.1.b	The Proponent shall prepare and implement an Aboriginal Consultation Plan that sets forth: - How the Proponent will fulfill all commitments made to Aboriginal communities during the Environmental Assessment process, including ongoing consultation during the design and implementation of the Undertaking	Completed.	
9.1.c	The Proponent shall prepare and implement an Aboriginal Consultation Plan that sets forth: - A Notification Protocol for how the Proponent will inform Aboriginal communities if archaeological resources or Aboriginal remains are encountered during construction	Completed.	
9.1.d	The Proponent shall prepare and implement an Aboriginal Consultation Plan that sets forth: - How the Proponent will issue notices and updates on key steps in the design and implementation of the Undertaking	Completed.	
9.2	The Proponent shall submit the Aboriginal Consultation Plan to the Director and the Aboriginal communities that were notified of the Undertaking during the Environmental Assessment process 30 days before the Start of Construction or by such other date as agreed to in writing by the Director	Completed.	February 9, 2015

APPENDIX B: PROVINCIAL EA NOTICE OF APPROVAL REGISTRY

Condition / Tracking #	Description	Status	Date Completed (where applicable)
9.3	The Proponent shall implement the Aboriginal Consultation Plan during construction, operations and closure of the Undertaking.	Completed to date.	
9.4	<p>The Proponent shall continue to consult with the following Aboriginal communities:</p> <ul style="list-style-type: none"> - Rainy River First Nations, Naicatchewenin First Nation, Big Grassy River First Nation, Naotkamegwanning (Whitefish Bay) First Nation, Anishinaabeg of Naongashiing (Big Island) First Nation, Ojibways of Onigaming First Nation, and the Sunset Country Métis community (represented by Métis Nation of Ontario Region 1 Consultation Committee), to inform them of when impacting activities will occur. Before impacting activities occur, the Proponent shall provide interested Aboriginal communities with reasonable opportunity to carry out specific cultural practices, as those communities consider appropriate. 	Completed to date.	
10.1	The Proponent shall complete stage 2 archaeological assessment studies for the project, as necessary. The stage 2 archaeological assessments must be submitted to the Ministry of Tourism, Culture and Sport (MTCS) for review and accepted into MTCS's report register prior to the start of in-ground work	<p>Completed to date.</p> <p>A Stage 2 overall property report was submitted in 2015. NG received clearance from MTCS on January 8, 2015.</p> <p>Additional archaeological work was completed during 2015 at the Pinewood River pumphouse, Tait Quarry and a section of the Highway 600 Re-alignment. NG received clearance from MTCS on August 6, 2015.</p>	
10.2	If during construction any archaeological resources are discovered, all construction activities within 100 metres of the archaeological resources will cease immediately and a licensed archaeologist will be retained to carry out the necessary fieldwork in compliance with Section 48(1) of the Ontario Heritage Act.	<p>Completed to date.</p> <p>There were no findings during the additional archaeological work completed during 2015 (see above).</p>	

APPENDIX B: PROVINCIAL EA NOTICE OF APPROVAL REGISTRY

Condition / Tracking #	Description	Status	Date Completed (where applicable)
10.3	Archaeological resources that require removal will be transferred to a public institution selected through consultation with local First Nations and Métis represented by the Métis Nation of Ontario Region 1 Consultation Committee, in consultation with MTCS. An MTCS collection transfer form will be completed by the surrendering licensee and the institution accepting the materials. Collection shall be curated to current standards	No transfers of artifacts occurred during 2015, pending receipt of Stage 3 and 4 clearance. The artifacts remain with Woodland Heritage Services.	
11.1	Prior to the construction of the proposed demolition landfill (or any other landfill) within the Site's property boundary, the Proponent shall obtain any necessary Environmental Assessment Act approvals and Environmental Protection Act approvals. In addition, prior to construction of the proposed demolition landfill (or any other landfill), the Proponent shall provide appropriate financial assurance to the Ministry's satisfaction, unless by then the appropriate cost has already been accounted for and provided to the MNM as part of Closure Plan requirements under the Mining Act	Not applicable.	

APPENDIX B: PROVINCIAL EA NOTICE OF APPROVAL REGISTRY

Condition / Tracking #	Description	Status	Date Completed (where applicable)
12.1	<p>As a minimum, the Proponent shall meet all requirements and commitments related to mine water discharges to the Pinewood River as agreed to by the Ministry during the EA process, or as revised through approvals by the Ministry. These requirements and commitments are found throughout the EA and include, but are not limited to, those set out in the July 17, 2014 memo by the Ministry's surface water specialist regarding the "Rainy River Gold Project: Effluent Criteria Discussion and Water Taking Thresholds" which appears in Appendix B of the Ministry Review of the EA.</p> <p>Further, as part of its application for the Environmental Compliance Approval(s) (ECA) required for the Undertaking, the proponent shall identify, through memo or other means acceptable to the ECA Director, how the proponent's proposed water management process will satisfy the technical requirements and other surface water quality commitments stated in the EA.</p>	Completed.	

APPENDIX B: PROVINCIAL EA NOTICE OF APPROVAL REGISTRY

Condition / Tracking #	Description	Status	Date Completed (where applicable)
12.2	<p>The Proponent shall meet all requirements and commitments related to the establishment of a minimum water taking threshold from the Pinewood River as agreed to by the Ministry during the EA process, or as revised through approvals by the Ministry. These requirements and commitments are found throughout the EA and include, but are not limited to, those set out in the July 17, 2014 memo by the Ministry's surface water specialist regarding the "Rainy River Gold Project: Effluent Criteria Discussion and Water Taking Thresholds" which appears in Appendix B of the Ministry Review of the EA.</p> <p>Further, as part of its application for the Permit(s) to Take Water (PTTW) required for the Undertaking, the proponent shall identify, through memo or other means acceptable to the PTTW Director, how the proponent's proposed water management process will satisfy the water taking commitments stated in the EA.</p>	Completed.	
13.1	<p>The Proponent shall fulfill all requirements and commitments related to tailings management, including maintaining a sufficient water cover over deposited tailings and fulfilling monitoring requirements detailed in provincial regulatory documents, including the Closure Plan and any other permits and approvals associated with the Undertaking. In addition, the Proponent shall consider deterrent systems to ward off bird and animal life from accessing the TMA.</p>	<p>The Tailings Management facility and the processing plant were not constructed in 2015. No milling of ore activities took place in 2015; therefore no tailings were generated.</p>	

APPENDIX B: PROVINCIAL EA NOTICE OF APPROVAL REGISTRY

Condition / Tracking #	Description	Status	Date Completed (where applicable)
13.2	<p>The Proponent shall assess and utilize provincial, national and international industry best practices for tailings management and water management containment facilities as they relate to climate change and the increasing frequency of severe weather abnormalities. The management of tailings, based on this assessment, shall be done in a manner adequate to ensure the appropriate management of any contaminants that may be present during and beyond the operating life of the Undertaking.</p> <p>The Proponent shall, as part of the Compliance Reports required under Condition 6, or otherwise specified in writing by the Director, provide details to the Ministry on how actions required by this condition have been considered in the project design, operations and the Closure Plan.</p>	<p>Completed.</p> <p>As described in the final EA / EIS Report and applicable Provincial approval applications (such as Environmental Compliance Approvals, Permits to Take Water and Lake and Rivers Improvement Act Permit (for dams and dykes), climate change and severe weather conditions and most notably regional storm events etc. have been included in the project designs, such as in the hydrologic design basis.</p>	
14.1	<p>The Proponent shall assess and utilize best practices to protect the biodiversity of existing species within the area of the Undertaking. Building on the baseline studies, including aquatic resources, terrestrial and species at risk baselines, already completed during the Environmental Assessment process, the Proponent shall establish a pre-construction biodiversity baseline and report on biodiversity levels within the area of the Undertaking.</p> <p>The Proponent shall as part of the Compliance Reports required under Condition 6, or otherwise specified in writing by the Director, provide details to the Ministry on how the requirements set out in this condition are being met.</p>	<p>New Gold has been working in conjunction with the MNRF on the submission of the Terrestrial Systems Monitoring Plan. Submissions have been sent on January 22, April 20, July 9 and July 30, 2015. A further copy was submitted to MNRF on February 3, 2016. New Gold anticipates that this will be the final submission to MNRF. In 2016 New Gold will commence monitoring as part of the Terrestrial Systems and Habitat Monitoring Plan.</p>	

APPENDIX B: PROVINCIAL EA NOTICE OF APPROVAL REGISTRY

Condition / Tracking #	Description	Status	Date Completed (where applicable)
14.2	<p>In addition to fulfilling all commitments with regard to rehabilitating wildlife habitat and terrestrial systems, the Proponent shall consult with MNRF on the development of a monitoring plan for terrestrial systems and habitat. The Proponent shall prepare the monitoring plan before the start of construction and shall provide a draft plan to MNRF for review before the plan is finalized. The Proponent shall carry out the plan during construction, operation and closure of the Undertaking. The purpose of the monitoring plan is to verify the accuracy of the predictions the Proponent made during the EA about the Undertaking's impacts on wildlife and habitat and to monitor the effectiveness of rehabilitation efforts for wildlife habitat and terrestrial environments.</p> <p>The Proponent shall report on biodiversity baseline and results required in Condition 14.1 through the Terrestrial Systems and Habitat Monitoring Plan.</p>	<p>New Gold has been working in conjunction with the MNRF on the submission of the Terrestrial Systems Monitoring Plan. Submissions have been sent on January 22, April 20, July 9 and July 30, 2015. A further copy was submitted to MNRF on February 3, 2016. New Gold anticipates this to be the final revision of the document.</p>	<p>Version 1; January 22, 2015, Version 2; April 20, 2015, Version 3; July 9, 2015, Version 4; July 30, 2015, Version 5; February 3, 2016.</p>
15.1.a	<p>Conditions Specific to Vegetation Clearing Activities Occurring Before May 1, 2015: The Proponent shall prepare and implement a Vegetation Clearing Plan that sets forth how the Proponent will conduct vegetation clearing activities that are intended to occur on the Site before May 1, 2015 ("Vegetation Clearing Activities"). As itemized below, this Vegetation Clearing Plan shall address issues related to those Vegetation Clearing Activities, including: compliance monitoring; compliance reporting; a complaint protocol; a community communication plan; consultation with Aboriginal communities; and terrestrial systems and habitat monitoring plans</p>	<p>Completed.</p>	<p>February 21, 2015</p>

APPENDIX B: PROVINCIAL EA NOTICE OF APPROVAL REGISTRY

Condition / Tracking #	Description	Status	Date Completed (where applicable)
15.1.b	Conditions Specific to Vegetation Clearing Activities Occurring Before May 1, 2015: Unless otherwise stated in Condition 15 or stipulated per another timeline as may be identified in writing by the Director, the Proponent shall submit all elements of the Vegetation Clearing Plan to the Director, for the public record, 15 days before the Proponent's intended start of Vegetation Clearing Activities	Completed.	February 21, 2015
15.1.c	Conditions Specific to Vegetation Clearing Activities Occurring Before May 1, 2015: The Proponent shall post the Vegetation Clearing Plan on its project website by no later than 15 days prior to the intended start of Vegetation Clearing Activities	Completed.	Revision 2 was posted February 12, 2015. Revision 3 was posted February 24, 2015.
15.2.a	Compliance Monitoring for Vegetation Clearing Activities: In relation to any vegetation clearing that occurs on the site before May 1, 2015, the Proponent shall monitor its fulfilment of: 1) the provisions of the Environmental Assessment pertaining to mitigation measures and public consultation regarding such Vegetation Clearing Activities; 2) all other commitments made by the Proponent during the Environmental Assessment process including the Commitments Registry as contained in the Errata dated December 15, 2014, in relation to such Vegetation Clearing Activities; and 3) the conditions included in section 15 of this Notice of Approval	All clearing occurred outside the breed bird window, in accordance with the EA and other requirements.	
15.2.b	Compliance Monitoring for Vegetation Clearing Activities: The Proponent shall prepare an implementation schedule for all the vegetation clearing activities that are intended to occur on the Site before May 1, 2015	Completed.	February 21, 2015

APPENDIX B: PROVINCIAL EA NOTICE OF APPROVAL REGISTRY

Condition / Tracking #	Description	Status	Date Completed (where applicable)
15.3.a	Compliance Reporting for Vegetation Clearing Activities: In relation to vegetation clearing activities that occur on the Site before May 1, 2015, the Proponent shall prepare a Vegetation Clearing Compliance Report which describes and provides evidence of the Proponent's compliance with Condition 15 of this Notice of Approval	NG submitted the updated RRP Vegetation Clearing Plan for Initial Clearing Prior to May 1, 2015, as required by the conditions of the Provincial EA Approval Notice.	February 9, 2015
15.3.b	Compliance Reporting for Vegetation Clearing Activities: The Proponent shall submit the Vegetation Clearing Compliance report to the Director within 30 days of completing the Vegetation Clearing Activities	Completed.	May 31, 2015
15.4.a	Complaint Protocol for Vegetation Clearing Activities: The Proponent shall prepare and implement a Vegetation Clearing Complaint Protocol that sets out how the Proponent will address inquiries and complaints received during any Vegetation Clearing Activities	An External Feedback Protocol for the RRP was submitted on February 2, 2105.	
15.5.a	Community Notification for Vegetation Clearing Activities: By no later than 15 days prior to the start of Vegetation Clearing Activities, the Proponent shall provide notification to those interested persons to whom Condition 8 of this Notice of Approval applies. The notification shall include a link to the location where copies of the Vegetation Clearing Plan can be seen by members of the public, as required by Condition 15.1 (c) above	Completed. The Vegetation Plan was posted to the RRP website (accessible to the public) on February 12, 2015. Aboriginal communities were notified on January 19, 2015.	Revision 2 was posted February 12, 2015. Revision 3 was posted February 24, 2015.

APPENDIX B: PROVINCIAL EA NOTICE OF APPROVAL REGISTRY

Condition / Tracking #	Description	Status	Date Completed (where applicable)
15.6.a	<p>Consultation with Aboriginal Communities for Vegetation Clearing Activities: By no later than 15 days prior to the intended start of Vegetation Clearing Activities, the Proponent shall notify and then follow up with the Aboriginal communities identified in Condition 9.1 of this Notice of Approval. This notification shall append the implementation schedule required under Condition 15.2(b), above. The notification shall also include a link to the location where copies of the Vegetation Clearing Plan can be seen by members of the public, as required by Condition 15.1 (c) above</p>	<p>Completed. An additional notification was provided on March 20, 2015 for new areas not included in the initial notification.</p>	<p>February 13, 2015</p>
15.6.b	<p>Consultation with Aboriginal Communities for Vegetation Clearing Activities: By no later than 15 days prior to the intended start of Vegetation Clearing Activities, the Proponent shall consult the Aboriginal communities identified in condition 9.4 of this Notice of Approval, to ascertain whether they wish to carry out specific cultural practices prior to Vegetation Clearing Activities occurring. The Proponent shall provide reasonable time for interested Aboriginal communities to carry out such cultural practices prior to the start of Vegetation Clearing Activities, in coordination with the interested communities.</p>	<p>Completed. An Aboriginal Blessing Ceremony was carried out on February 6, 2015 attended by several of the 16 Aboriginal communities. The event was a follow-up to the RRP update/vegetation clearing schedule sent to Aboriginal communities in January 2015.</p>	<p>February 6, 2015</p>

APPENDIX B: PROVINCIAL EA NOTICE OF APPROVAL REGISTRY

Condition / Tracking #	Description	Status	Date Completed (where applicable)
15.6.c	Consultation with Aboriginal Communities for Vegetation Clearing Activities: By no later than 7 days prior to the intended start of Vegetation Clearing Activities, the Proponent shall submit to the Director copies of: the notification letters that it sent in fulfilment of conditions 15.6 (a) and (b); any records confirming the Aboriginal communities' receipt of those notification letters; records of any concerns heard from the Aboriginal communities in response to those letters; and records of efforts the Proponent has made, or has committed to make, to address those concerns	Completed.	February 16, 2015
15.7.a	The Proponent shall fulfill all its EA commitments with regard to land clearing and to rehabilitating wildlife habitat and terrestrial systems, in relation to any associated impacts from Vegetation Clearing Activities.	Completed to date.	
15.8	When the Proponent submits its Vegetation Clearing Plan materials to the Director, the Proponent shall append a statement indicating that its submission is intended to fulfill Condition 15 of this Notice of Approval	Completed.	February 21, 2015
15.9	The Director may require the Proponent to amend aspects of the Vegetation Clearing Plan at any time. Should an amendment be required, the Director will notify the Proponent, in writing, of the required amendment and of the date by which the Proponent must complete the amendment and submit it to the Director	Not applicable.	
15.10.	The Proponent shall carry out the Vegetation Clearing Plan, as it may be amended by the Director	Completed, including as amended in Fall 2015	
15.11.	The Proponent shall make documentation pertaining to the Vegetation Clearing Plan available to the Ministry or designate upon request, in a timely manner, when so requested by the Ministry	No such requests were made during 2015	

APPENDIX B: PROVINCIAL EA NOTICE OF APPROVAL REGISTRY

Condition / Tracking #	Description	Status	Date Completed (where applicable)
15.12.	In addition to fulfilling the Vegetation Clearing Plan conditions above, the Proponent shall also mention its Vegetation Clearing Activities, as relevant, in other materials it produces to fulfill the other conditions required by this Notice of Approval	The Vegetation Clearing Plan was posted on New Gold's website February 12, 2015 (revision 2) and February 24, 2015 (revision 3). It remains on the website to date. First Nations and the Metis Nation of Ontario were also notified of the Vegetation Clearing Plan. While no other specific material was produced on the plan, clearing activities were provided in general discussions with stakeholders.	
16.1.a	The Proponent shall ensure that the need for the Undertaking is capable of adapting to climate change during the construction, operation and closure phases of the Undertaking, and to that end the Proponent shall: Plan its construction practices, operational procedures and the design of the Undertaking to respond to storms, flooding, (including the consideration of the 500-year flood level), drought or other severe weather events resulting from climate change.	Completed to date.	
16.1.b	The Proponent shall ensure that the need for the Undertaking is capable of adapting to climate change during the construction, operation and closure phases of the Undertaking, and to that end the Proponent shall: Design the post-closure aspects of the site to ensure resilience to climate change impacts, such as maintaining an appropriate site water balance and sufficient water cover over the TMA. The Proponent shall also undertake an updated review of climate change scenarios at a point approximately two years prior to implementing final closure of the TMA to confirm, or modify, anticipated future hydrological conditions related to climate change scenarios	Completed to date.	

APPENDIX B: PROVINCIAL EA NOTICE OF APPROVAL REGISTRY

Condition / Tracking #	Description	Status	Date Completed (where applicable)
16.1.c	The Proponent shall ensure that the need for the Undertaking is capable of adapting to climate change during the construction, operation and closure phases of the Undertaking, and to that end the Proponent shall: The Proponent shall, as part of the Compliance Reports required under condition 6, or otherwise specified in writing by the Director, provide details to the Ministry on how climate change has been incorporated into the project design	NO REVISIONS NECESSARY for 2015 report.	
16.1.d	The Proponent shall ensure that the need for the Undertaking is capable of adapting to climate change during the construction, operation and closure phases of the Undertaking, and to that end the Proponent shall: The Proponent shall also include these considerations, as appropriate, in the Closure Plan or future Closure Plan amendments submitted to MNDM.	Completed. As described in the final EA / EIS Report and filed Closure Plan, climate change and severe weather conditions and most notably regional storm events etc. have been included in the project designs, such as in the hydrologic design basis.	
17.1	The Proponent shall obtain other necessary permits and approvals including, but not limited to, those that are committed to in the Environmental Assessment	Completed to date. A large number of Provincial environmental approvals were obtained during 2015.	
18.1.a	In carrying out the Undertaking, the Proponent shall require that its contractors, subcontractors and employees: Fulfil the commitments made by the Proponent in the Environmental Assessment process, including those made in the Environmental Assessment and in the Proponent's responses to comments received during the formal Environmental Assessment comment periods	Completed to date. All employees and contractors go through a standard site orientation, which includes: environmental, community, health and safety (and other aspects). Each contractor is required to attend an environmental kick off meeting prior to start of work. Purpose of the meeting is to review commitments and permit requirements applicable to the Scope of Work. There are also statements in contracts that require the contractor to adhere to all applicable permits and site environmental procedures. Financial / other materials may include specific clauses with contracts on standards, requirements etc., depending on the nature of the contract.	
18.1.b	In carrying out the Undertaking, the Proponent shall require that its contractors, subcontractors and employees: Meet applicable regulatory standards regarding the construction, operation and maintenance of the Undertaking, including these conditions of approval	Completed to date. See above.	

APPENDIX B: PROVINCIAL EA NOTICE OF APPROVAL REGISTRY

Condition / Tracking #	Description	Status	Date Completed (where applicable)
18.1.c	In carrying out the Undertaking, the Proponent shall require that its contractors, subcontractors and employees: Obtain any necessary approvals, permits or licenses	Completed to date. The majority of environmental-related approvals, permits and licenses are obtained by NG for the RRP, although contractors, subcontractors and employees are responsible for meeting the requirements therein.	
19.1	Prior to implementing any proposed changes to the Undertaking, the Proponent shall determine what Environmental Assessment Act requirements are applicable to the proposed changes and shall fulfill those Environmental Assessment Act requirements	During the construction phase there were 3 scenarios where New Gold discussed project changes with MOECC regarding additional tree clearing, road realignments and relocation of surface water sampling locations. No implications were created as a result.	Highway 600 Realignment February 4 to March 13, 2015; Additional Tree Clearing March 10-20, 2015; Relocation of surface water sample location 22 December 2015
20.1	30 days prior to construction, or as per another timeline as may be identified in writing by the Director, the Proponent shall provide notification of the Proponent's intention to proceed with construction. If significant changes to the existing environment or regulatory changes have occurred that could affect the implementation of the Undertaking or result in any new potential adverse environmental effects from the undertaking, the Proponent shall include a description of those changes in its notice. The Proponent shall provide the notice to the Director and Regional Director of the Ministry, the MNRF, the MNDM, and any other relevant agencies that the Proponent or the Director determine may have an interest in any changes provided in the notice.	Completed.	January 29, 2015

APPENDIX C
COMMITMENTS REGISTRY

APPENDIX C: COMMITMENTS REGISTRY

Condition / Tracking #	Description	Status	Date Completed (where applicable)
1	The RRP (RRP) will monitor and mitigate air emissions, particularly dust, through implementation of current industry best management practices.	Air quality monitoring is ongoing. Mitigation measures utilized during 2015 included: - dust managed through water application to roads, laydowns and quarry areas. - calcium also applied to roads as needed.	
2	A fugitive dust best management practices plan will be prepared to identify all potential sources of fugitive dusts, outline mitigating measures that will be employed to control dust generation, and detail the inspection and recordkeeping required to demonstrate that fugitive dusts are being effectively managed.	Completed; draft plans were submitted as part of ECA (air) application and have subsequently been revised. Management practices were implemented during 2015 as applicable.	November 4, 2014
3	Sound will be monitored during construction, operations and active closure phases consistent with Ministry of the Environment (MOE) requirements	Sound monitoring was completed during 2015, consistent with the Provincial Environmental Compliance Approval (ECA Air) 0412-A2LR4V and <i>Endangered Species Act</i> (ESA) Permit FF-C-001-14.	
4	NG (NG; previously Rainy River Resources) expect that the monitoring required will include: total suspended particulate (TSP) and metals on the TSP size fraction, PM10, dustfall and passive monitoring for NO2 and SO2. NG commits to conducting this monitoring which is also expected to be an approval requirement.	Air quality monitoring was initiated in May 2015. The air quality monitoring plan is currently under review by the Ministry of Environment and Climate Change. The plan includes monitoring of these parameters, either directly or indirectly.	
5	The best management plan related to fugitive dust management, source control and operational constraints required by the Provincial Environmental Compliance Approval will be provided to Environment Canada (EC) for review and will be fully implemented prior to the construction phase.	Completed and was included as part of Provincial ECA application. Dust management was implemented during 2015 (early construction phase).	November 4, 2014
6	A transboundary notification under the Canada - U.S. Air Quality Agreement will be filed prior to operation.	A notification was filed in 2014.	September 17, 2014
7	Planning measures aimed at reducing fuel and power consumption for the RRP site include the following: • Using larger, more fuel efficient trucks for material transport; • Using optimum insulation in buildings to reduce heat loss and heat recovery from equipment where practical; and • Maintaining site equipment and vehicles in good working order through regular preventative maintenance.	2015 was a partial year of construction and aspects related to insulation etc. were not relevant. No specific measures were implemented during 2015 to reduce fuel and power consumption included apart from utilization of good operating practices.	
8	Monitoring of air quality will occur during construction, operations and active closure phases per Section 13.1.1 of the Final EA Report.	Monitoring has been ongoing at the RRP since May 2015. Two air quality sampling stations were established in May 2015: one to the south of the Site near the beginning of the Highway 600 reroute on Tait Road, and one to the east of the Site on Gallinger Road.	
9	Sound mitigation measures will be used, such as selection of quieter equipment. Implementation of sound abatement strategies to dampen sound infiltrating habitats and migratory bird leks surrounding high traffic areas of the mine.	Measures implemented during 2015 to reduce sound during the early construction phase included: - reducing size of blasts where appropriate. - tree buffers maintained where practical.	
10	Should the final equipment selections determine through detailed engineering and sound level assumptions vary materially from those presented in the Environmental Assessment (EA), an updated assessment with the new information will be prepared as part of the detailed design and approvals application(s) for the RRP.	Not applicable during 2015 (early construction phase).	
11	The maximum charge size per delay for blasting is limited to 1,000 kg as the vibration and overpressure mitigation option. If the charge size is larger than 1,000 kg per delay, the vibration and overpressure levels emanating from RRP blasting operations will be reassessed in a detailed study to confirm that the predicted levels are within guideline limits.	Very limited blasting (and only small blasts in the plant site and quarry areas) occurred during 2015, as the mine was not in production.	
12	NG will continue to work actively with local residents throughout the period of mine construction, operation and active closure to further manage and reduce any disturbances due to air and sound emissions to the extent possible, as well as for other effects.	NG established a neighbour committee in 2015 to provide information to surrounding residents regarding construction work at the site. Quarterly newsletters and other notices with respect to construction activities were mailed out district wide. In addition: - NG delivered contact information to all neighbours to ensure they had means to contact the company if any concerns. - Blasting updates were provided to neighbours. A vibration monitoring program was also instituted in 2015.	

APPENDIX C: COMMITMENTS REGISTRY

Condition / Tracking #	Description	Status	Date Completed (where applicable)
13	<p>Collectively and individually, the processes and water management strategies proposed for the RRP are Best Management Practices and/or Best Available Technology Economically Achievable (BATEA), and NG has committed to the use of such processes and water management strategies in the Final EA Report. Examples of such BATEA committed to by NG:</p> <ul style="list-style-type: none"> • Use of the in-plant SO₂/Air process for cyanide destruction and metal precipitation, as well as to extended post SO₂/Air treatment effluent aging in the TMA (TMA) and water management ponds, followed by constructed wetland treatment; • Detailed plans and designs to manage potentially acid generating rock (PAG) on site, including ongoing progressive reclamation at the stockpile to limit acid generation, with drainage from this stockpile reporting to the mine rock pond, for re-use as part of the mill process water supply thereby reducing fresh water requirements. Dissolved metals associated with east mine rock stockpile drainage would ultimately report to the process plant SO₂/Air and hydroxide precipitation circuit, and then to tailings; • Use of emulsion and/or emulsion blend explosives as a means of limiting ammonia residuals from the use of blasting agents at source; and • Collection of site runoff and seepage as per MMER (MMER), and to maximize the use of near 100% contact water recycle for the processing plant water supply. 	<p>During 2015 a key focus on environmental management at the site was related to water management and suspended solids control, and to a lesser extent ammonia control. There was no processing / requirement for cyanide control during 2015. A Geochemical Monitoring Plan for the Construction and Operation Phases was issued in accordance with MOECC approval requirements, and has been implemented at the RRP site. Monitoring is ongoing.</p> <p>All blasting for Mine Operations was emulsion-based during 2015.</p>	
14	Surface water runoff will be diverted from entering the pit or flowing through stockpiles by ditching or other means.	Not applicable during 2015 (early construction phase).	
15	Open pit dewatering water will be contained and if necessary, treated before it is discharged to the environment.	Not applicable during 2015 (early construction phase). Dewatering of pit was not initiated.	
16	In regards to final reclamation, the open pit will be flooded at closure to create a pit lake either passively through natural groundwater entry and precipitation inputs; or by active enhanced flooding. Discussions will be held with the various government agencies to determine the optimal balance between maintaining Pinewood River flows and filling the open pit on an expedited basis.	Not applicable during 2015 / construction phase.	
17	Enhanced pit flooding using the West Creek source is not under consideration by NG and has been clarified in the Draft Closure Plan submitted for review, pending discussions and further direction from various government agencies.	Not applicable during 2015 / construction phase.	
18	Pit lake water quality will be monitored regularly as part of the post-closure monitoring program.	Not applicable during 2015 / construction phase.	
19	Should it be determined that future treatment is needed for stockpile runoff / seepage and overflow from the pit at closure, passive treatment options would be fully considered during the detailed design stage.	Not applicable during 2015 / construction phase.	
20	Ditches (and ponds as appropriate), will be established around the stockpiles to collect and manage runoff. Diversions will be sized to convey the environmental design flood. All sedimentation ponds will be designed with a retention period to meet the MMER discharge requirement for total suspended solids. The design criteria for perimeter ditching in this area (east mine rock stockpile and low grade ore stockpile) has been increased to the 100-year return period condition, as these stockpiles will contain PAG materials.	The design and construction of structures in accordance with this commitment was initiated during 2015. The ECA application was more flexible, stating that they are designed to provide a minimum 12 day retention time without the use of coagulant / flocculent, or a minimum of 3 days if coagulant / flocculent is used. The Provincial ECA provide greater flexibility and allows that coagulant / flocculent to be used if needed / as applicable.	
21	The retention time for sediment ponds 1 and 2 has been increased to 12 days, subject to review and acceptance by the MOECC.	Design of structures in accordance with this commitment was initiated during 2015 or as refined through the Provincial environmental approval process. Ponds were not in place during 2015.	
22	PAG mine rock (and ore) will be managed, with drainage from the PAG mine rock and ore stockpile reporting to the mine rock pond, for re-use as part of the process plant water supply.	No PAG mine rock or ore stockpiles were developed during 2015. The mine rock pond was not in place during 2015.	

APPENDIX C: COMMITMENTS REGISTRY

Condition / Tracking #	Description	Status	Date Completed (where applicable)
23	<p>The deepest local till layer resting directly on bedrock contains PAG material and will be visually segregated and treated as PAG material unless otherwise determined, and will be stockpiled within the east mine rock stockpile, or disposed of in a manner where acid rock drainage (ARD) potentials will be controlled. A detailed mine rock segregation program / management strategy will be developed around the distribution of non-potentially acid generating (NPAG) and PAG materials, and a program of ongoing testing to be carried out during mining operations of the mine rock being removed.</p> <p>NG proposes to utilize visual and geochemical data to identify that portion of the till overlying the bedrock which requires handling as PAG material, based on the characteristics of the clasts (loose stones) contained therein. Segregation is commonly utilized and MEND 5.4.2d (MEND Manual, Volume 4, Prevention and Control) indicates that segregation is applicable where a clean separation can be made and where a disposal location is available for the PAG material - both of which apply to the RRP. This PAG till would be treated as PAG material and would be directed to the east mine rock stockpile for disposal along with PAG mine rock.</p>	<p>A Geochemical Monitoring Plan for the Construction and Operation Phases was issued in accordance with MOECC ECA 5178-9TUPD9 requirements, and has been implemented at the RRP site. Monitoring was ongoing during 2015.</p>	
23 cont	<p>NG is conducting a detailed sampling and analysis program of the overburden within the pit area. The study will be used to delineate the thickness of till over the bedrock that may contain locally derived PAG rock materials so that these materials can be segregated during operations and placed into the East Mine Rock stockpile, or otherwise maintained in a saturated condition. Periodic confirmation analysis will be conducted during the (open pit) stripping program to ensure that the initial interpretation of the thickness of till requiring handling as PAG remains accurate.</p> <p>A draft mine rock and overburden management plan was submitted with the Draft Closure Plan that will be finalized and submitted with the Final Closure Plan for filing with the MNDM later in 2014. It will also be provided to EC per their request. The plan will be revised during operations if necessary to ensure it remains current and as part of future Closure Plan amendments.</p>	<p>Completed. A Mine Rock and Overburden Management Plan was included in the filed Closure Plan (as Appendix J).</p>	<p>February 20, 2015</p>
24	<p>Geochemistry monitoring:</p> <ul style="list-style-type: none"> • Runoff and seepage related to tailings and stockpiles will be monitored as per surface and groundwater monitoring; • Blast hole sampling from open pit operations for mine rock segregation will be carried out throughout the open pit operations phase; • Tailings samples will be collected at regular intervals during the mine operations phase; and • Field trials will be carried out during all or a portion of the mine construction and operations phases as required to generate data need to confirm modeling results. 	<p>A Geochemical Monitoring Plan for the Construction and Operation Phases was issued in accordance with MOECC ECA 5178-9TUPD9 requirements, and has been implemented at the RRP site. Monitoring was ongoing during 2015.</p> <p>To date no tailings have been produced or additional geochemical field trials initiated.</p>	
25	<p>PAG material would only be used for fill material in areas where it can be maintained in a saturated state to exclude oxygen and inhibit sulphide oxidation. These uses may include underground backfill and construction of the upstream portion of the TMA dams.</p>	<p>No PAG mine rock or ore stockpiles were developed during 2015. There was no locations where saturation was proposed as a mitigation measure during 2015.</p>	
26	<p>Progressive rehabilitation of mine rock and overburden stockpiles will be undertaken where practical once the maximum height of each stockpile has been reached and/or as each lift is completed.</p>	<p>Not applicable during 2015 as mine rock and overburden stockpiles were not established.</p>	
27	<p>Encapsulation of the east mine rock stockpile under a multi-layered cover is proposed with a long term goal of controlling ARD.</p>	<p>Not applicable during 2015 (early construction phase). The East Mine Rock Stockpile was not established.</p>	
28	<p>As part of the geochemical characterization studies for the project, NG committed to an extended monitoring period of kinetic cells to both demonstrate and continue to evaluate the robustness of the geochemical results.</p>	<p>Kinetic cells are ongoing as required to support predictions. As of December 31, 2015 the following remained active:</p> <ul style="list-style-type: none"> • 7 laboratory kinetic tests. <ul style="list-style-type: none"> - 3 waste rock humidity cells - 2 tailings humidity cells - 2 tailings columns; and • 10 field cells. 	
29	<p>The run-of-mine stockpile is the temporary, working stockpile for the processing plant; the low grade ore stockpile is proposed to be depleted during the latter part of operations. As a contingency only, it is proposed that should an ore stockpile remain at closure, it will be managed similar to PAG in the East Mine Rock Stockpile with a multi-layer cover and seeded. Runoff and seepage will be directed to the open pit as part of the passive water management system.</p>	<p>Not applicable during 2015 (early construction phase). In addition, no run-of-mine stockpile was present during 2015.</p>	

APPENDIX C: COMMITMENTS REGISTRY

Condition / Tracking #	Description	Status	Date Completed (where applicable)
30	Site runoff and seepage will be collected, managed and treated per the Provincial and MMER requirements.	Completed as required during 2015 in accordance with Provincial approvals (including ECA 5781-9VJQ2J and 5178-9TUPD9) and the MMER. During 2015 contact water was only generated on the plant site. Sampling and discharge met ECA approvals requirements. (Note: one exceedance of total suspended solids was determined to be laboratory error.)	
31	The overall site footprint and watershed capture will be minimized to the extent practical, so as to minimize the quantity of runoff and seepage requiring treatment and management.	Completed to date, including during 2015.	
32	West Creek pond and West Creek diversion flows will be measured on a continuous basis using water level transducers, supported by monthly manual measurements during the winter period, when transducer results experience interference caused by ice pressure.	These structures remained under construction during 2015 and flow measurements were not possible.	
33	The West Creek pond will only contain natural, non-contact water. The West Creek diversion channel will be kept separate from the constructed wetland downstream of the TMA, so as not to mix the natural creek water with excess water discharged from the TMA.	Detailed design during 2015 was consistent with this commitment.	
34	West Creek Diversion will be positioned far enough from the pit perimeter to ensure integrity and stability and is expected to provide like-for-like fish habitat replacement.	Detailed design during 2015 was consistent with this commitment.	
35	The West Creek diversion will be permanent, and there is no further consideration being given to diverting any flows from this creek into the open pit to help accelerate pit flooding at or following closure.	Detailed design during 2015 was consistent with this commitment.	
36	There will be secondary containment in place for tailings and contact water pipelines at the crossing of West Creek.	There were no tailings or contact water pipelines over the West Creek during 2015.	
37	A reliable water source for process plant operations and ancillary uses will be generated by maximizing the rate of water recycled to the process plant. Water demands are expected to be met by capturing and reusing the effluents and contact water within the site footprint.	Detailed design during 2015 was consistent with this commitment. The process plant is under construction and did not require water inputs during 2015.	
38	Water will be taken from the Pinewood River for the purpose of developing an initial water inventory, only during the construction phase. NG does not intend to take water directly from the Pinewood River thereafter, except possibly for contingency purposes.	No water was taken from the Pinewood River for inventory establishment during 2015. The pipeline and intake structure was under design / construction during 2015.	
39	Water recycle will be maximized, using approximately 100% water recycle for the processing plant water supply.	Detailed design during 2015 was consistent with this commitment. The process plant was under construction and did not require water during 2015.	
40	Local area lakes will not be used for process water supply for the RRP.	Detailed design during 2015 was consistent with this commitment. There are no plans to take water from local lakes.	
41	All process reagents and materials, and wastes, will be handled and stored responsibly, according to supplier and safety guidance, regulatory requirements and industry best practices.	Detailed design during 2015 was consistent with this commitment. The process plant was under construction during 2015 and these materials were not produced.	
42	Any chemical spills within the process plant / chemical storage areas will be controlled through provision of secondary containment as appropriate, and will not enter the environment. Spills of potentially hazardous materials during transport, or from on-site material storage and handling facilities will be managed. Measures will be taken to prevent and clean up any hydrocarbon spills (and other spills) at source to ensure such materials do not enter surrounding waters as practical. Spills will be reported to the MOECC and other appropriate agencies per the requirements of the Ontario <i>Environmental Protection Act</i> .	Detailed design during 2015 was consistent with this commitment. The process plant was under construction during 2015 and no chemical spills occurred.	
43	The TMA dams will meet strict regulatory requirements including the requirements of the Provincial <i>Lakes and Rivers Improvement Act</i> and will be constructed to withstand the probable maximum flood and maximum credible earthquake. A remedial action plan would be developed in consultation with appropriate government agencies in the event of dam breach.	Detailed design during 2015 was consistent with this commitment. Construction of the Water Management Pond (WMP) commenced in 2015. The north (Dam 4) and north east (Dam 5) dams of the WMP are also dams for the Tailings Management Area (TMA). During 2015 no water or tailings were discharged into these facilities. In December 2015 New Gold became aware of a crack in the top of Dam 5. Construction on the dam ceased and the Ministry of Natural Resources and Forestry (MNR) was notified. Further geotechnical studies are planned for 2016 to determine the cause. A stop work for this structure as well as Dam 4 was issued to New Gold by MNR on January 22, 2016.	Ongoing - completion anticipated in 2016.

APPENDIX C: COMMITMENTS REGISTRY

Condition / Tracking #	Description	Status	Date Completed (where applicable)
43 cont'd	The TMA dams will meet strict regulatory requirements including the requirements of the Provincial <i>Lakes and Rivers Improvement Act</i> and will be constructed to withstand the probable maximum flood and maximum credible earthquake. A remedial action plan would be developed in consultation with appropriate government agencies in the event of dam breach.	The review of the construction of these dams indicates that deviations were made from the original designs submitted to MNRFP as part of the LRIA application process in May 2015. The order requests that New Gold stop all work on Dams 4 and 5, provide a preliminary Geotechnical Investigation Summary by Feb, 5, 2016, provide revised plans and specifications for remedial works as recommended in the geotechnical review as well as a construction schedule by Feb 22, 2016, submit the final geotechnical investigation report and an independent review to MNRFP by March 1, 2016. Furthermore the MNRFP requested as-built drawings, and an Operations Maintenance and Surveillance Plan in April 2016. Further details on the outcome of the Stop Work Order and the Geotechnical review will be provided in the 2016 ACR.	Ongoing - completion anticipated in 2016.
44	Runoff and seepage from the TMA and stockpiles will be captured, monitored, and either released to the environment if applicable criteria are met and/or re-used in the process plant during operations. Cyanide and metal concentrations in the TMA seepage and all treated effluent discharges to the environment will be controlled through the use of in-plant cyanide destruction and heavy metal precipitation, augmented by extended effluent aging in the TMA ponds.	Detailed design during 2015 was consistent with this commitment. Construction of the TMA dams was initiated in part during 2015 but the TMA was not in operation. The majority of stockpiles were also not operating. Stockpiling of mineral wastes from initial plant site excavations started in 2015.	
45	All active pipelines will be inspected twice per 12 hour shift and informally at other times. Should flow unexpectedly lessen or stop in a pipeline, an inspection will be immediately conducted.	There were no active pipelines during 2015.	
46	The exposed tailings beach will be covered at closure with a layer of overburden, with flooding of the remaining tailings with a layer of water to prevent the tailings from oxidizing over the longer term. This will ensure that the tailings pond water remains of high quality, such that it will not pose a threat to wildlife.	Not applicable during 2015 (construction phase). Detailed designs are consistent with this commitment.	
47	NG commits to maintaining the deposited tailings during the post closure period in a saturated condition in perpetuity to prevent the generation of ARD. NG also commits to developing and completing a monitoring plan which evaluates the integrity of the cover system (e.g. low permeability overburden zone) and the continuous saturation of the tailings.	Not applicable during 2015 (construction phase). Detailed designs are consistent with this commitment.	
48	The thickness and maintenance of water cover over the TMA will be clarified in the Closure Plan.	Complete. The thickness and maintenance of water cover over the TMA was clarified in the Closure Plan filed in 2015.	February 20, 2015
49	A detailed monitoring plan will be developed as part of the Provincial closure planning process to ensure that the deposited tailings solids remain permanently saturated in the post-closure condition. This plan will include consideration of the low permeability overburden perimeter cover bordering the tailings dams to ensure that the deposited tailings beneath the perimeter overburden cover remain saturated, or alternatively that the overburden zone cover itself remains sufficiently saturated so as to prevent oxidation of the underlying tailings. The monitoring program will consist of the following principal elements: <ul style="list-style-type: none"> • Establishment of a field trial to simulate the performance of the low permeability cover, with initiation during the development phase and monitoring during operations to support the closure design to ensure saturation levels in the cover and underlying tailings to confirm, or modify, design criteria; • Survey of the final tailings surface prior to flooding for closure, with results of the survey tied to TMA dam crest elevations and the spillway invert elevation; • Establishment of a water level monitoring station within the tailings pond, near to the spillway, with measurements to be taken at regular intervals; 	The monitoring plan was detailed in the Closure Plan filed in 2015 and will be modified as appropriate in future Closure Plan Amendments including during operations, as additional information becomes available.	February 20, 2015

APPENDIX C: COMMITMENTS REGISTRY

Condition / Tracking #	Description	Status	Date Completed (where applicable)
49 cont	<ul style="list-style-type: none"> • Establishment of a series of piezometers positioned around the TMA overburden zone perimeter that would measure water levels within both the overburden and the underlying deposited tailings, with such piezometers to be fitted with data loggers that would take continuous water level measurements at approximately daily intervals; • Updating the hydrological data for analyses of the TMA basin at a point approximately two years prior to implementing final closure of the TMA to confirm, or modify, applicable water balance parameters; • Undertaking an updated review of climate change scenarios at a point approximately two years prior to implementing final closure of the TMA to confirm, or modify, anticipated future hydrological conditions related to climate change scenarios; and • Annual reviews of water cover performance. 	See above.	
50	<p>In the event that observed water levels within the TMA pond were to decline to a level where there was a risk of the deposited tailings solids becoming partially unsaturated for extended periods, the available contingencies to mitigate that condition would be the following:</p> <ul style="list-style-type: none"> • Periodically pump water from the Pinewood River during spring freshet, or during other high water periods, to maintain the TMA post closure water cover within an optimal zone (alternatively water could be periodically pumped to the TMA from the upper water column of the flooded open pit – pending suitable water quality); • Raise the spillway invert to further increase the depth of the TMA water cover (this action would require a widening of the spillway to continue to allow for passage of the probable maximum flood); or • Raising the dam crest, as well as the spillway invert to further increase the depth of the TMA water cover. <p>In development of the above contingencies, trigger levels would be developed for implementation of the contingencies.</p>	The detailed design during 2015 was consistent with these potential contingency measures.	
51	<p>Mitigation measures that will be used to reduce potential adverse effects to the Pinewood River aquatic system will include the following:</p> <ul style="list-style-type: none"> • Extensive contact water recycling for process plant needs to reduce overall water demands and to minimize final effluent discharge volumes to the Pinewood River; • Use of SO₂/Air treatment for cyanide destruction and heavy metal precipitation in the process plant followed by extended effluent aging in the TMA pond and in the water management pond to achieve the highest quality effluent reasonably achievable; • Use of a constructed wetland system for final effluent polishing of a major portion of the discharge; • Management of the site for ARD control during operations and following closure to prevent adverse water quality impacts to the Pinewood River; • The DFO (DFO) Freshwater Intake End-of-Pipe Guidelines will be followed as mitigation for potential fisheries effects associated with water intakes; • Construction of the Pinewood River Highway 600 re-alignment crossing (bridge or culverts) in a manner that does not restrict fish passage; • Maintaining current fish habitat productivity; and • Implementation of an extensive monitoring plan for water quality and flow discharges, and receiving water aquatic life and habitat. 	<p>The detailed design during 2015 was consistent with these commitments. Only the following commitments were applicable, and accordingly fulfilled or addressed during detailed design activities during 2015:</p> <ul style="list-style-type: none"> • The DFO (DFO) Freshwater Intake End-of-Pipe Guidelines will be followed as mitigation for potential fisheries effects associated with water intakes; • Construction of the Pinewood River Highway 600 re-alignment crossing (bridge or culverts) in a manner that does not restrict fish passage; • Maintaining current fish habitat productivity; and • Implementation of an extensive monitoring plan for water quality and flow discharges, and receiving water aquatic life and habitat. 	
52	<p>All final discharge points will have a point of control to immediately cease discharge. A control structure will be constructed at the discharge point of the treatment wetland to be in compliance with MMER. All discharge locations will be regularly sampled in accordance with environmental approval requirements and will provide insight as to ongoing treatment system performance.</p>	<p>The detailed design for the RRP is consistent with this commitment, although there were no effluent discharges during 2015.</p> <p>Construction of the Constructed Wetland was not initiated during 2015.</p>	

APPENDIX C: COMMITMENTS REGISTRY

Condition / Tracking #	Description	Status	Date Completed (where applicable)
53	NG acknowledges the need to meet effluent criteria for any discharge to the environment. Excess water discharged to the environment will meet applicable Federal and Provincial guidelines for the protection of aquatic life, or other scientifically defensible alternatives, in the receiver, as well as any site-specific approval requirements.	The detailed design for the RRP is consistent with this commitment. There have been no significant Project-related effluent discharges to date, as 2015 included only a partial year of construction. In 2015 there were 4 minor suspended solids upset conditions related to construction of diversion channels and rainfall events, These four events were discussed with Provincial regulators in the Kenora MOECC office and were reported to the Spills Action Centre. Monitoring and erosion mitigation was implemented.	Suspended Solids Releases reported to the Spills Action Centre; October 28, 2015 - Sediment Release from Teeple Diversion to Teeple Creek, November 5, 2015 - sediment release from Mine Rock Pond Temporary Diversion to Clark Creek, November 18, 2015 - sediment release from Mine Rock Pond Temporary Diversion to Clark Creek, November 23, 2015 - sediment release from Teeple Diversion to Teeple Creek.
54	Minimize the number of final effluent compliance points as reasonable.	The detailed design during 2015 for the RRP was consistent with this commitment.	
55	NG agrees to work with the MOE to develop a mutually acceptable minimum flow threshold, below which water from the Pinewood River would not be taken to build up the initial water inventory to support processing plant start up operations. Subject to approval(s), NG is proposing spring and open water flow thresholds of 10,000 m3/d and 5,000 m3/d, respectively, below which direct water taking from the Pinewood River downstream of McCallum Creek, would temporarily cease until river flows recover. The application of such flow restrictions would be based on day to day prorated flow data obtained from Water Survey of Canada (WSC) Station 05PC023.	Complete. Thresholds have been agreed to through the Provincial environmental approvals process, including Permit to Take Water (PTTW) 8776-9W2QN3.	
56	The appropriateness of the use of the WSC station will be assessed as part of the operations planning, and if this station appears unsuitable, a separate dedicated flow monitoring station will be set up, either independently, or in association with the WSC.	A dedicated station was established on the Pinewood River on October 9, 2015 in consultation with the MOECC.	
57	Optimize the timing and positioning of final effluent discharges to the Pinewood River so as to limit the potential for adverse flow effects to the river.	Not applicable during 2015 (early construction phase).	
58	Subject to approval(s), NG is proposing to operate the final effluent discharge from both the Constructed Wetland and the pipeline discharge from the Water Management Pond, such that a minimum 1:1 receiver to final effluent mixing ratio would be maintained in the Pinewood River, with the understanding that receiver to final effluent mixing ratios of greater than 1:1 would be the norm.	The Provincial ECA 5178-9TUPD9 received from the MOECC is consistent with this commitment.	
59	NG commits to the discharge of effluents to the Pinewood River in a manner that will achieve rapid mixing within the river. If future operational monitoring shows that effective receiver mixing is not attained, NG commits to implement additional measures to enhance mixing to a level which is mutually acceptable to the MOE and NG. Such additional measures could include the use of rock groynes placed on either side of the channel to force mid-channel mixing, and use of boulder clusters to increase flow turbulence within the mixing zone.	Not applicable during 2015 (early construction phase).	
60	Scheduling of RRP development activities will consider environmental aspects, such as fish spawning.	Environmental aspects, such as fish spawning and breeding bird season were fully considered in the construction schedule developed and implemented during 2015.	
61	A No Net Loss Plan and compensation strategy will be developed and implemented by NG to create new like for like habitats as project compensation and/or enhance existing restoration programs, to offset the RRP habitat losses.	The No Net Loss Plan and compensation strategy were finalized during 2015. Implementation was initiated during 2015 although the schedule for completion was somewhat delayed.	
62	Except where aquatic habitat will be overprinted (and compensated for as part of DFO authorizations) for project development, a 120 m buffer zone will be maintained adjacent to rivers and creeks to the extent practical, to protect watercourses and their associated vegetated margins.	This commitment has been fully considered in the project design and implemented during the 2015 construction. Developments within buffer zone are as planned.	

APPENDIX C: COMMITMENTS REGISTRY

Condition / Tracking #	Description	Status	Date Completed (where applicable)
63	Fish flesh and fish organ tissue samples from the Pinewood River have been analyzed for metals for walleye and northern pike in the baseline condition. A commitment has been made to continue to monitoring metals in these two fish species after mine start-up. Should there be future evidence to show that fish are being taken from the Pinewood River on a more regular basis and prepared as a food source, NG would be pleased to work with these fishermen to collect and analyze a reasonable sampling to reflect any applied methods of food preparation.	Not applicable during 2015 (early construction phase).	
64	Fish tissue (dorsal muscle tissue and livers) sampling will include both northern pike and walleye. If contaminant concentrations increase over time, potential consumers and the applicable Provincial departments (MOE and MNR; MNR) would be informed and information related to increased health risks (if any) would be provided, as suggested.	Not applicable during 2015 (early construction phase).	
65	Specific erosion and sediment control measures and their locations will be provided in the permit application documents once detailed design is completed to avoid direct impacts to fish during the mine construction phase.	Erosion and sediment control measures were provided in the various environmental approval applications, as applicable during 2015, including applications for approval under the <i>Lakes and River Improvement Act</i> and <i>Environmental Protection Act</i> .	
66	Pond dams will be inspected at a regular interval by site employees for any visible signs of concern and particularly during and after major storm events. They will also be inspected periodically by a qualified geotechnical engineer at an interval that meets regulatory requirements at a minimum.	Not applicable as no ponds were fully constructed / holding water during 2015.	
67	Surface water: to be monitored during construction, operations and active closure phases, with post active closure monitoring expected to continue for a decade (or more) at reduced frequencies pending ongoing analysis of data	Environmental monitoring was ongoing during 2015, consistent with all environmental approvals, environmental commitments and site management practices.	
68	Proposed (subject to modification to ensure participation and data sharing is adequate to meet the expectations of Aboriginal groups) surface water sampling program would include a First Nation training component followed by a rotating schedule whereby a First Nation representative would accompany NG staff on the monthly surface water sampling program. Laboratory results will be received by NG, reviewed and submitted to the identified individuals of each participating First Nation along with a summary explanation.	This program has not yet been fully instituted as yet. A preliminary training program took place in 2014 with the following participating: Couchiching, Naicatchewenin, Big Grassy and Seine River First Nations (although all 16 First Nation communities were invited to participate).	
69	Sampling of sediments will take place to evaluate soil quality parameters prior to undertaking any further closure activities for any contact water ponds and drainage works (including stockpile sediment ponds) where breaching is proposed.	Not applicable during 2015 (construction phase).	
70	NG staff is willing to describe the ongoing water quality program and provide freshet data on request. The water management plan for the RRP provides for the management of all site contact waters in accordance with accepted industry standards including periods of high runoff, and sequences of high precipitation years.	No request was received.	
71	There will be no sediment ponds associated with the aggregate pit(s).	There were no sediment ponds associated with the Roen Road or Outcrop 3 during 2015. During the detailed design stage it was determine that a settling pond may be required to ensure high quality effluent from the Tait Quarry (to allow for ammonia degradation in situ and settling of suspended solids) and Provincial environmental approvals were obtained for this structure; however, the quarry did not generate water and the sump was not needed.	

APPENDIX C: COMMITMENTS REGISTRY

Condition / Tracking #	Description	Status	Date Completed (where applicable)
72	<p>Related to the transmission line:</p> <ul style="list-style-type: none"> • Tree stumps, root mats and ground vegetation cover will be left intact to reduce the potential for surface erosion and to help maintain groundcover for plant and wildlife habitat; • Vegetation (shrub) screens will be left to the extent practical along the single creek crossing that exists between Beadle and Preachers Lake, near the east end of the alignment, for erosion protection, while ensuring clearance requirements for conductors; • No in-water work will be conducted and all poles will be placed above the high water mark; • Industry standard sediment interception and erosion control practices will be applied wherever appropriate / needed; • Should any erosion of the ground be identified at the end of the construction period (or during any intervening inspections), the exposed area would be re-seeded or otherwise stabilized to control erosion until native vegetation takes hold. If the erosion is more severe, other methods such as placement of straw matting or equivalent will be used; • Where required in larger quantities, construction materials will be stored a minimum distance of 200 m from any open (non-frozen) surface water, and from major access points; and • Fueling and maintenance of vehicles will not occur within 50 m of surface waterbodies. 	<p>Clearing of the transmission line right of way was initiated during November 2015 and followed these commitments.</p>	
73	<p>As a result of the independent First Nation review of the Final Environmental Assessment report, NG committed to a joint water quality monitoring and reporting program with the area First Nations (including Big Grassy River First Nation; BGRFN) as part of the existing monthly water quality monitoring program which is currently carried out by NG. The program will be funded by NG and form an integral part of the overall environmental management program as it relates to First Nations traditional knowledge and assurances of maintaining water quality and by extension, aquatic biota protection. The program will be developed jointly with the First Nations in lead-up to the initiation of mine construction. (Letter to Chiefs from Kyle Stanfield, October 2013).</p>	<p>This program has not yet been fully instituted as yet. A preliminary joint Water Quality Management training program took place in 2014 with the following participating: Couchiching, Naicatchewenin, Big Grassy and Seine River First Nations (although all 16 First Nation communities were invited to participate). NG is working with the Aboriginal groups to set up an environmental monitoring board in 2016.</p>	
74	<p>NG has committed to provide a program of close coordination with Rainy River First Nations in support of the pre-existing First Nation Watershed Program and water quality protection. Company funding will be provided as part of the fisheries compensation program to further water quality enhancement programs for the Pinewood and similar agriculturally impacted waterways.</p>	<p>This program has not yet been fully instituted as yet. A preliminary training program took place in 2014 with the following participating: Couchiching, Naicatchewenin, Big Grassy and Seine River First Nations (although all 16 First Nation communities were invited to participate). NG is working with the Aboriginal groups to set up an environmental monitoring board in 2016.</p>	
75	<p>To help limit the exposure of potentially acid generating materials to this base drainage through the former Clark Creek channel zone, a layer of non-potentially acid generating rock will be placed in the former creek channel bed area.</p>	<p>Not applicable during 2015, as Clark Creek continued to flow through its native channel during 2015.</p>	
76	<p>Groundwater: to be monitored during construction, operations and active closure phases, with post active closure monitoring expected to continue for a decade (or more) at reduced frequencies pending ongoing analysis of data.</p>	<p>Installation of additional groundwater monitoring wells was initiated during 2015. Monitoring of existing wells continued during 2015.</p>	
77	<p>A groundwater level (flow) and quality monitoring program of regular sampling and dipping of dedicated monitoring wells will be implemented to confirm that no area wells are affected by the mine. Furthermore, local well owners will be asked to participate in a well water quality program to monitor water quality in their wells.</p>	<p>Dewatering of the open pit was not initiated as yet during 2015 (early construction phase), and accordingly groundwater level flow and quality was not completed. Local well owners have not as yet been asked to participate in a well water quality program.</p>	
78	<p>If water quality or availability in local wells is compromised (by the RRP), NG is obligated to replace the system or offer water treatment systems to rectify issues related to water quality or availability shown to be caused by the mine.</p>	<p>Agreed. Not applicable during 2015 (early construction phase).</p>	
79	<p>If local artesian wells stop flowing (related to the RRP), NG will need to provide and install a pump to replace the artesian flow used by the homeowner.</p>	<p>Agreed. Not applicable during 2015 (early construction phase).</p>	
80	<p>A number of groundwater monitoring wells will be placed around the TMA and east mine rock stockpile and pond areas, as shown in Figure 13-3 of the Final EA Report. This groundwater monitoring network may be amended or expanded through the MOE approvals process. Water levels in these monitoring wells will be measured continuously with data downloaded semi-annually. Groundwater samples will be collected quarterly, as described in Section 13.6 of the Final EA Report.</p>	<p>Installation of additional groundwater monitoring wells was initiated during 2015 in accordance with Provincial approval requirements. Monitoring is anticipated to start mid-2016.</p>	

APPENDIX C: COMMITMENTS REGISTRY

Condition / Tracking #	Description	Status	Date Completed (where applicable)
81	<p>Mitigation measures that will be used to reduce potential effects on groundwater include the following:</p> <ul style="list-style-type: none"> • Returning captured groundwater indirectly to the Pinewood River (after treatment and testing if necessary) during the period of mine operations to minimize potential flow effects to the river, especially during naturally occurring, low flow conditions; • Using in-plant SO₂/Air treatment for cyanide destruction and heavy metal precipitation to optimize the quality of groundwater seepage associated with the TMA during operations and following mine closure; • Managing the site for ARD control, both during operations and following closure to prevent adverse water quality impacts to the Pinewood River, including that associated with any groundwater seepage; • Accelerating open pit inflow following mine closure, to the extent practicable, balancing the need for managing water quality and maintaining Pinewood River flows over the interim period until the pit can be completely flooded; and • Implementing a monitoring plan for water levels, water quality and flow discharges, and receiving water aquatic life and habitat maintenance. 	<p>The detailed design for the RRP is consistent with this commitment, although 2015 was only a partial year of construction and apart from ARD management, the other parts do not pertain to the first year of construction.</p>	
82	<p>Monitoring of key terrestrial systems and Species at Risk (SAR) will occur during the construction and operations phase, with post closure habitat development and utilization by wildlife to continue at reduced frequencies consistent with SAR Permit requirements.</p>	<p>Monitoring of terrestrial systems and SAR during the first year of construction was compliant with environmental approvals and EIS monitoring plan.</p>	
83	<p>Puffballs: NG and AMEC would be happy to receive photos and/or samples of this species and have AMEC experts identify it. If AMEC experts are unable to identify the species they will consult with staff at the Royal Ontario Museum or the Canadian Museum of Nature.</p>	<p>Complete. Samples were submitted to the Royal Ontario Museum and confirmed as common species.</p> <p>This information was provided to the resident in person, on December 11, 2014.</p>	<p>December 11, 2014</p>
84	<p>Rare plant surveys are proposed to be carried out along portions of the preferred transmission line corridor in late Spring / early Summer, 2014. Prior to transmission line construction, additional data collection will be undertaken for that portion of the proposed transmission line routing (Alternative A) west of Highway 71, where there is a baseline data gap for rare plants surveys. This additional data collection will be undertaken to support transmission line permitting, and would consist of the following activities, spread across a 2 km corridor (1 km on either side the transmission line): transect surveys for vegetation communities including surveys targeting the presence of rare plant species. Results will be made available to MNR once the report is complete and the report will be referred to in the Errata.</p>	<p>Complete. Surveys were completed during 2014 and a report issued. The report was referred to in the issued Errata for the EIS / EA Report.</p>	<p>September 19, 2014</p>
85	<p>The principal mitigation measures that are proposed to limit short and long term adverse effects to local vegetation communities include:</p> <ul style="list-style-type: none"> • Minimizing dust production along primary mine rock and overburden transportation routes by implementing dust suppression methods and thereby minimizing the zone of influence. Primary dust suppression methods will include road watering. • Annual monitoring of dust deposition on vegetation adjacent to mine roads; and • Active revegetation and encouragement of natural revegetation / recolonization of disturbed areas as part of progressive reclamation during operation and active reclamation at mine closure. 	<p>These mitigating measures were employed during 2015 as applicable, including use of water and calcium for dust suppression on roads.</p>	

APPENDIX C: COMMITMENTS REGISTRY

Condition / Tracking #	Description	Status	Date Completed (where applicable)
86	<p>In regards to the transmission line:</p> <ul style="list-style-type: none"> • Additional rare plant and breeding bird surveys to be undertaken in May and June, 2014 to identify any further potential environmental constraints that might require construction modification, such avoidance of disruption to rare plant sites (if present) through site specific habitat protection measures; • Undertaking transmission line construction in winter (normally December 1 to March 31) to better protect ground cover in sensitive areas where the protection of wetlands, rare plants and SAR is required, and completion of the remainder of transmission line construction in the late summer and fall, outside of the breeding bird season; • Vegetation removal will be reduced to the extent necessary to support construction activities and longer-term transmission line reliability (from interference with conductors and fall of adjacent hazard trees). Minimizing vegetation removal includes retaining existing low vegetation ground cover; • Access to the right of way (ROW) will be provided from existing infrastructure (some of which may need to be upgraded, as reasonable for personnel, material and equipment access), but no new permanent access roads are proposed. Generally, where access is poor, the ROW will be accessed along the ROW itself. Construction vehicles will not be allowed to travel through surface waters; and • Mechanical means will be used for periodic vegetation height maintenance along the transmission line, instead of herbicides. 	<p>Studies were completed during 2014 and the detailed design / construction plan is consistent with this commitment. Only clearing of the transmission line right of way occurred during 2015 which was initiated in late November 2015.</p>	
87	<p>Scheduling of RRP development activities will consider environmental aspects. Clearing of forests having a density of at least 10 cavity trees per hectare with a diameter at breast height greater than 25 cm will be limited to outside of the bat roosting season (April 1 to November 15) unless cleared by a bat biologist that has surveyed the trees for bat activity. Timing of the transmission line construction will be planned to avoid the breeding bird and main tourist season, as possible.</p>	<p>The schedule of RRP construction activities during 2015 were consistent with this commitment. There was no tree clearing at all during May 1 to August 15. Mature forest clearing (as needed only) occurred prior to May and after November 2015. Clearing of the transmission line ROW was initiated in late November 2015.</p>	
88	<p>Wildlife awareness information will be included in regular safety and environmental inductions performed by the mine, along with SAR identification and sensitivities, permit conditions and cultural awareness. Wildlife sighting logs or information boards will be installed to notify workers of local bear, wolf or other large mammal or furbearer observations. Workers and contractors will be made aware of seasonal changes in local mammal behaviour or presence in proximity to the mine. Food wastes generated on site will be managed in a manner that limits the attraction of wildlife, such as Black Bear.</p>	<p>The site orientation program including information regarding wildlife awareness and avoidance of wildlife harassment. A no tolerance policy implemented regarding feeding / harassing wildlife onsite. Wildlife awareness information is provided on an ongoing basis during field-based inspections of construction areas. Wildlife sighting logs are completed regularly.</p>	
89	<p>All staff and contractors will be provided with training in animal encounters as part of the site orientation process.</p>	<p>The site orientation program including information regarding wildlife awareness and wildlife encounters. Wildlife awareness information is provided on an ongoing basis during field-based inspections of construction areas.</p>	
90	<p>Road-killed animals or any other carcasses found onsite will be removed in a timely manner to limit the attraction of wildlife.</p>	<p>The limited number of road-killed animals / carcasses found within the RRP site during 2015 were either disposed of at the landfill, on the project site in an area with limited to no human interaction or buried (depending on the circumstance / animal).</p>	
91	<p>A wildlife monitoring program will record the efficacy of these avoidance measures (will evaluate the effectiveness of the methods implemented) and annual reporting to EC and the MNR will provide the information requested by the reviewer. NG will provide opportunities to Aboriginal groups to receive the annual reports.</p>	<p>A detailed wildlife monitoring plan was progressed during 2015 with MNRF, but had not been finalized by the end of the year.</p>	
92	<p>A more detailed wildlife follow-up monitoring plan will be developed through consultation with the MNR and EC. As suggested by the reviewer, additional control sites around the periphery of the mine footprint can be developed and monitored following mine construction and periodically throughout mine operations. A draft plan will be issued to MNR and EC prior to commencement of construction. NG will provide opportunities to Aboriginal groups to participate in the development of the plan.</p>	<p>A detailed wildlife monitoring plan was progressed during 2015 with MNRF, but had not been finalized by the end of the year.</p>	
93	<p>The use of exclusion fencing for reptiles and amphibians will be added as a mitigation measure during construction and operations. The placement of fencing will be decided upon through consultation with the MNR and EC.</p>	<p>The use of exclusion fencing for reptiles and amphibians was considered during 2015, but during 2015 construction activities there was no apparent conflict and it was not considered needed. There were no reptile / amphibian mortalities identified.</p>	

APPENDIX C: COMMITMENTS REGISTRY

Condition / Tracking #	Description	Status	Date Completed (where applicable)
94	<p>In regards to the transmission line:</p> <ul style="list-style-type: none"> • Construction crews will be advised not to interfere with or harass wildlife. No hunting or fishing by construction crews will be allowed. Disciplinary actions will be taken should either occur; • Contractors will be required to handle food and food wastes in a responsible manner, and to educate workers to ensure no feeding of wildlife; and • Should any nuisance wildlife be encountered which pose a risk to construction crews, the MNR will be contacted for direction. 	<p>Construction of the transmission line was not initiated during 2015. This information was communicated to the contractor during an environmental kick off meeting in November 2015. The contractors involved in the clearing of the right of way during 2015 were instructed and required to meet these commitments. Weekly inspections of the powerline are conducted by the NG environmental department to ensure ongoing diligence.</p>	
95	<p>The primary mitigation strategies for limiting adverse effects to wildlife will include:</p> <ul style="list-style-type: none"> • Preventing hunting from occurring on all lands owned by NG (required for the safety of workers; this is currently ongoing during exploration as well); • Maintenance to the extent practical of a 120 m buffer zone adjacent to rivers and creeks to protect watercourses and their associated vegetated margins; • Restoration of disturbed habitats at closure, including the development of habitats capable of supporting a diversity of wildlife species, including ungulates, large predators, furbearers and bats; • Enforcement of speed limits along proposed mine access roads to reduce the potential for collisions with ungulates. Signs warning drivers of the possibility of wildlife encounters will be posted in areas of high wildlife activity. A log of collisions will be kept to monitor the effectiveness of the proposed mitigation and additional mitigation measures will be implemented if necessary; • Inclusion of wildlife awareness information into regular safety and environmental inductions performed by the mine. Workers and contractors will be made aware of seasonal changes in local deer or large mammal behaviour or presence in proximity to the mine. Workers and contractors will be made aware of seasonal changes in local mammal behaviour or presence in proximity to the mine; 	<p>These mitigation measures were utilized during 2015, with the exclusion of signage placement which will be installed when NG assumes ownership of roads from MTO.</p>	
95 cont	<ul style="list-style-type: none"> • Treatment of the tailings slurry to levels equal to or less than 1 mg/L weak acid dissociable cyanide before deposition in the TMA (which is well below the 50 mg/L weak acid dissociable cyanide threshold criteria outlined by the International Cyanide Management Code); • Fencing the TMA to prevent access; • Covering the exposed tailings beach at closure with a layer of overburden and flooding the remaining tailings with a layer of water to prevent the tailings from oxidizing over the longer term. This will ensure that the tailings pond waters remain of high quality, such that they will not pose a threat to wildlife. The margins of the tailings pond will develop as wetland habitat; • Minimizing dust production along primary haulage routes by implementing dust suppression methods and thereby minimizing the RRP zone of influence; and • Disposing of food wastes generated on site in a manner that limit the attraction of wildlife, such as Black Bear and wolves. 	<p>TMA was not constructed in 2016.</p> <p>Dust is managed on roads using water trucks.</p> <p>A waste management program was implemented in 2015. All general waste bins have locking lids and disposal frequency has increased to prevent attracting wildlife</p>	
96	<p>Mitigation measures that will be used to reduce potential adverse effects to amphibians will include the following:</p> <ul style="list-style-type: none"> • Development of a compact RRP site to reduce overall habitat loss and to limit potential adverse effects related to sound emissions to the extent practical; • Restricting the clearing of terrestrial amphibian breeding habitats to periods outside the amphibian breeding season as directed by the MNR; • Implementation of sound abatement strategies to dampen sound infiltrating habitats surrounding high traffic areas of the mine; • Enforcement of speed limits along proposed mine access roads to reduce the potential adverse effects of increased vehicular traffic associated with the RRP. Signs warning drivers of the possibility of wildlife encounters will be posted in areas of high wildlife activity. A log of collisions will be kept to monitor the effectiveness of the proposed mitigation and additional mitigation measures will be implemented if necessary; • If frog mortality on roadways is found to be a problem along mine access roads or the re aligned Highway 600, silt fencing may be installed to prevent frogs from crossing the road and may direct them to the nearest culvert(s); 	<p>These mitigation measures were utilized during 2015, with the exclusion of signage placement which will be installed when NG assumes ownership of roads from MTO.</p> <p>Highway 600 was visually monitored for frog mortality in 2015 and there was no apparent issue and not additional mitigation measure were into place.</p>	

APPENDIX C: COMMITMENTS REGISTRY

Condition / Tracking #	Description	Status	Date Completed (where applicable)
96 cont	<ul style="list-style-type: none"> • Inclusion of wildlife awareness information into regular safety and environmental inductions performed by the mine. Workers and contractors should continually be made aware of seasonal changes in local wildlife behaviour or presence in proximity to the mine; • Treatment of tailings slurry containing cyanide and associated heavy metals from the ore leaching process in the process plant using the SO₂/Air process before being discharged to the TMA; • Discharge of effluent that will result in protection of aquatic life standards in the Pinewood River so that no adverse water quality effects to amphibians are anticipated; • Maintenance of generally abiotic conditions within the TMA to discourage wildlife presence; and • Covering the exposed tailings beach at closure with a layer of overburden and flooding the remaining tailings with a layer of water to prevent the tailings from oxidizing over the longer term. This will ensure that the tailings pond waters remain of high quality such that they will not pose a threat to wildlife. Margins of the tailings pond will be developed into wetland habitat. 	<p>Wildlife awareness training was implemented (initial site induction and ongoing).</p> <p>There was not tailings produced / stored during 2015.</p>	
97	Generally abiotic conditions will be created within the fenced TMA during operations to limit the interest of the pond to waterfowl.	Not applicable during 2015 (early construction phase). The TMA was not fully constructed / and not in operation, therefore not holding process waters.	
98	Scheduling of RRP development activities will consider environmental aspects, such as fish spawning and bird nesting seasons. Tree and woodland clearing will be restricted to periods outside of the breeding bird season (May 1 to August 15). Clearing or modification of known Trumpeter Swan breeding habitat will be restricted to outside the breeding season (March 15 to August 15).	All scheduling of site activities during 2015 was in full consideration of environmental aspects and no known timing conflicts occurred.	
99	A monitoring plan will be developed for Common Nighthawk and Eastern Whip-poor-will, in partnership with the MNR, EC and interested First Nation Communities including the standardized information suggested well as a mortality trigger that will be decided upon during consultation with the MNR and EC, and in consideration of conditions under the Net Benefit Permit being developed by the MNR.	A monitoring plan was developed and implemented during 2015 in accordance with ESA FF-C-001-14.	
100	Breeding bird surveys are proposed to be carried out along portions of the preferred transmission line corridor in late Spring / early Summer, 2014. Prior to transmission line construction, additional data collection will be undertaken for that portion of the proposed transmission line routing (Alternative A) west of Highway 71, where there is a baseline data gap for breeding bird surveys. This additional data collection will be undertaken to support transmission line permitting, and would consist of point count surveys for breeding birds between late May and early July, spread across a 2 km corridor (1 km on either side the transmission line). Results will be made available to MNR once the report is complete. NG will provide opportunities to Aboriginal groups to receive the survey results.	Complete.	September 19, 2014
101	<p>The primary mitigation strategies for limiting adverse effects to birds and habitat:</p> <ul style="list-style-type: none"> • Inclusion of wildlife awareness information into regular safety and environmental inductions performed by the mine. Wildlife sighting logs or information boards will be installed to notify workers of local observations. Workers will be made aware of seasonal changes in local animal behaviour or presence in proximity to the mine; • Minimizing the level of potentially disturbing activities near any known or subsequently discovered active raptor and raven nest sites until the nest is vacated; • Annual monitoring of the Bald Eagle nest in Woodland 122 to determine seasonal eagle activity at the nest site which will guide RRP activities occurring in proximity to the nest. Should eagles continue to use the nest site and raise offspring, work will be adjusted appropriately to reduce adverse effects to the breeding success of the local pair; • Maintenance of a safe distance between RRP activities and the nest as well as maintenance of landscape buffer areas (preferably forested or natural) between the activity and nest trees. To avoid disturbing nesting Bald Eagles, no buffer is necessary around nest sites outside of the breeding season once the juvenile eagles are known to have vacated the defined significant wildlife habitat; • Limiting less typical activities in proximity to the nest site during the nest building and breeding season. The local eagle pair appears tolerant of agricultural activities and road grading; 	These strategies were implemented during 2015.	

APPENDIX C: COMMITMENTS REGISTRY

Condition / Tracking #	Description	Status	Date Completed (where applicable)
101 cont	<ul style="list-style-type: none"> • Environmental induction programs and ongoing environmental updates provided to workers will make them aware of Bald Eagle nesting activities prior to the commencement of new or irregular activities in proximity to an active eagle nest (within 500 m), and having them observe proper protocol in order to avoid disturbance during these activities; • Restriction of tree and woodland clearing to periods outside of the breeding bird season which extends between May 1 and August 15; • Protection of suitable breeding habitat as a result of the provision of compensatory habitat for species protected under the Endangered Species Act; • Restoration of disturbed habitats at closure to habitats capable of supporting a diversity of wildlife species; • Implementation of sound abatement strategies; • Enforcement of speed limits along proposed mine access roads to reduce the potential adverse effects of increased vehicular traffic associated with the RRP. Signs warning drivers of the possibility of wildlife encounters will be posted in areas of high wildlife activity. A log of collisions will be kept to monitor the effectiveness of the proposed mitigation and additional mitigation measures will be implemented if necessary; 	These strategies were implemented during 2015, with the exception of restoration aspects, as that aspect was not applicable to the first year of construction.	
101 cont	<ul style="list-style-type: none"> • Restrictions to clearing or modification of known Trumpeter Swan breeding habitat to outside the breeding season (March 15 to August 15) to prevent the disturbance of nesting swans or impact the likelihood of cygnet survival; • Disposing of food wastes generated on site in an appropriate manner that limits the attraction of wildlife, including Common Ravens, Turkey Vultures and Bald Eagles; • Timely removal of carcasses of road-killed animals or any other carcasses found onsite to limit the attraction of wildlife, such as Common Ravens and Turkey Vultures; and • Treatment of tailings slurry containing cyanide and associated heavy metals from the ore leaching process in the process plant using the SO₂/Air process before being discharged to the TMA; and • Creation of generally abiotic conditions within the fenced TMA during operations to limit the interest of the pond to waterfowl. 	These strategies were implemented during 2015, with the exception of aspects related to the TMA (not applicable to the first year of construction).	
102	<p>In regards to the transmission line:</p> <ul style="list-style-type: none"> • Additional rare plant and breeding bird surveys to be undertaken in May and June, 2014 to identify any further potential environmental constraints that might require construction modification, such avoidance of disruption to rare plant sites (if present) through site specific habitat protection measures; • Tree clearing to take place outside of the breeding bird nesting season, defined as the period from May 1 to July 31; • Undertaking transmission line construction in winter (normally December 1 to March 31) to better protect ground cover in sensitive areas where the protection of wetlands, rare plants and SAR is required, and completion of the remainder of transmission line construction in the late summer and fall, outside of the breeding bird season; • Direct impacts to raptor nesting areas will be avoided. There are currently no stick nests on or near the proposed ROW. Should any stick nests be identified during construction, the area will be avoided until a qualified avian biologist can be contacted for direction; • Conductor wire separation distances will be sufficiently far apart to preclude larger avian species, particularly raptors which frequently use hydro pole for perching or nesting, from electrocution by contacting two conductor wires simultaneously; 	These strategies were implemented during 2015. No new stick nests were identified in relation to the ROW.	
102 cont	<ul style="list-style-type: none"> • Construction crews will be advised not to interfere with or harass wildlife. No hunting or fishing by construction crews will be allowed. Disciplinary actions will be taken should either occur; and • Contractors will be required to handle food and food wastes in a responsible manner, and to educate workers to ensure no feeding of wildlife. 	These strategies were implemented during 2015.	
103	The site will be rendered suitable for other compatible land uses and functions after the mine has closed and the land has been reclaimed. NG will encourage and, as practical, actively restore the RRP site to productive, naturalized vegetation communities on cessation of mining capable of supporting a diversity of wildlife species. RRP revegetation efforts at closure will include providing suitable habitat for SAR species, most notably whip-poor-will, and other species of interest, if practical.	Not applicable during 2015 (construction phase).	

APPENDIX C: COMMITMENTS REGISTRY

Condition / Tracking #	Description	Status	Date Completed (where applicable)
104	The RRP footprint has been altered through consultation with the MNR in order to further avoid known whip-poor-will territories where feasible, including maintenance of forest buffers between RRP components and whip-poor-will nesting and foraging habitat where practical. Provide compensatory whip-poor-will habitat that protects known territories and other identified suitable habitat. Where feasible, manage site lighting fixtures to reduce excess light production near whip-poor-will foraging areas, so as to minimize disturbing these nocturnal birds (with all appropriate health and safety issues considered).	Private land habitat has been provided in accordance with their Provincial ESA permit. Compensation habitat was provided during 2015 in accordance with ESA FF-C-001-14. Site environmental inspections address location and use of light plants as possible while maintaining site safety aspects.	
105	NG will implement a monitoring plan for Eastern Whip-poor-will populations and nesting in proximity to the proposed mine and transmission line sites, within compensatory habitat areas. Continue funding external research programs in collaboration with the MNR in order to further our understanding of this poorly studied species, as part of a larger overall benefits compensation package required by the Endangered Species Act permit.	A monitoring plan was developed and implemented as needed during 2015 in accordance with ESA FF-C-001-14. NG will fund a separate / independent research program as a requirement and in accordance with the ESA permit.	
106	NG will implement a monitoring plan for Bobolink populations and nesting in proximity to the proposed mine site within compensatory habitat areas, and in appropriate control areas - developed through consultation with the MNR. Acquire and protect compensatory open country breeding bird habitat suitable for Bobolink breeding at a ratio of 1:1 for open-country habitat removed for RRP development.	Private land habitat has been provided in accordance with their Provincial ESA permit. Compensation habitat was provided during 2015 in accordance with ESA FF-C-001-14.	
107	NG will identify Barn Swallow nesting colonies prior to mine construction. Establish zones where Barn Swallow colonization is desired, tolerated or not wanted. Create artificial nesting structures to encourage recolonization or new colonization by Barn Swallows in areas where farm structures are removed. Implement a monitoring plan for Barn Swallow populations in proximity to the proposed mine and transmission line sites and in appropriate control areas.	Four active Barn Swallow nesting locations were identified within the project footprint through baseline studies prior to the start of construction. One of four active nest locations was removed prior to the nesting season in 2015. Four artificial nesting structures were created and established in April 2015 in locations which were determined suitable in collaboration with the MNRF.	
108	Where feasible, RRP lighting fixtures will be directed in such a fashion as to reduce excess production of light to the surrounding environment (for Common Nighthawk and Short-eared Owl).	Site environmental inspections address location and use of light plants as possible while maintaining site safety aspects.	
109	Monitoring of key terrestrial systems and SAR: during the construction and operations phase, with post closure habitat development and utilization by wildlife to continue at reduced frequencies consistent with SAR Permit requirements	Not applicable to 2015 (construction phase).	
110	Mitigation measures that will be used to reduce potential adverse effects to Eastern Whip-poor-will will include the following: <ul style="list-style-type: none"> • Provision of compensatory whip-poor-will habitat that protects known territories and other identified suitable habitat; • Restricting the clearing of habitats to periods outside the breeding bird season which occurs from May 1 to August 15; • Implementation of sound abatement strategies to dampen sound infiltrating habitats surrounding high traffic areas of the mine; • Where feasible, management of site lighting fixtures to reduce excess light production near whip-poor-will foraging areas so as to minimize disturbing these nocturnal birds (with all appropriate health and safety issues considered); • Maintenance of forest buffers between RRP components and whip-poor-will nesting and foraging habitat where practical; • Management of dust through dust suppression activities (best management practices); • Enforcement of speed limits along mine-controlled roads to reduce the potential adverse effects of increased vehicular traffic associated with the RRP. Signs warning drivers of the possibility of wildlife encounters will be posted in areas of high wildlife activity. A log of collisions will be kept to monitor the effectiveness of the proposed mitigation and additional mitigation measures will be implemented if necessary; 	These measures were implemented during 2015, with the exception of signage which will be put into place when roads are transferred to NG.	
110 cont	<ul style="list-style-type: none"> • Environmental induction of RRP personnel, including SAR identification and sensitivities, and knowledge of <i>Endangered Species Act</i> permit conditions; • Implementation of a monitoring plan for Eastern Whip-poor-will populations and nesting in proximity to the proposed mine and transmission line sites, within compensatory habitat areas and in appropriate control areas; and • Continue funding external research programs in collaboration with the MNR in order to further our understanding of this poorly studied species, as part of a larger overall benefits compensation package required by the Endangered Species Act permit. 	These measures were implemented during 2015. NG will fund a separate / independent research program as a requirement and in accordance with the ESA permit.	

APPENDIX C: COMMITMENTS REGISTRY

Condition / Tracking #	Description	Status	Date Completed (where applicable)
111	<p>The primary mitigation strategies for limiting adverse effects to Bobolink will include:</p> <ul style="list-style-type: none"> • Restricting the development of open country habitats to periods outside the breeding bird season which occurs from May 1 to July 31; • Acquiring and protecting compensatory open country breeding bird habitat suitable for Bobolink breeding at a ratio of 1:1 for open-country habitat removed for RRP development; • Enforcement of speed limits along mine controlled roads to reduce the potential adverse effects of increased vehicular traffic associated with the RRP. Signs warning drivers of the possibility of wildlife encounters will be posted in areas of high wildlife activity. A log of collisions will be kept to monitor the effectiveness of the proposed mitigation and additional mitigation measures will be implemented if necessary; • Environmental induction of RRP personnel, including SAR identification and sensitivities and knowledge of <i>Endangered Species Act</i> permit conditions; • Implementation of sound abatement strategies to dampen sound infiltrating habitats surrounding high traffic areas of the mine; • Restoration of disturbed habitats at mine closure or encouraging development of habitats capable of supporting Bobolink and other open country species; and • Implementation of a monitoring plan for Bobolink populations and nesting in proximity to the proposed mine site within compensatory habitat areas, and in appropriate control areas. 	<p>These measures were implemented during 2015, with the exception of signage which will be put into place when roads are transferred to NG. Restoration-related aspects were not applicable to the first year of construction.</p>	
112	<p>Mitigation measures that will be used to reduce potential adverse effects to Barn Swallows will include the following:</p> <ul style="list-style-type: none"> • Identification of Barn Swallow nesting colonies prior to mine construction; • Restricting habitat displacement for mine infrastructure to periods outside the breeding bird season which occurs from May 1 to August 15; • Creation of artificial nesting structures to encourage recolonization or new colonization by Barn Swallows in areas where farm structures are removed; • Restoration of disturbed habitats at closure or encouraging development of habitats capable of providing suitable Barn Swallow foraging habitat; • Sound abatement strategies will be implemented to dampen sound infiltrating habitats surrounding high traffic areas of the mine; • Establishment of zones where Barn Swallow colonization is desired, tolerated or not wanted. These measures may be necessary to prevent colonization in areas of high human or vehicular activity that would put swallows and swallow breeding success at risk or where order and cleanliness are desired. In this case, discouraging tactics may be implemented to discourage colonization. Conversely, protection may be provided to swallows nesting in other locations where their presence is encouraged and does not cause problems to mine operations; 	<p>These measures were implemented during 2015. Restoration-related aspects were not applicable to the first year of construction.</p>	
112 cont	<ul style="list-style-type: none"> • Enforcement of speed limits along mine controlled roads to reduce potential adverse effects of increased vehicular traffic associated with the RRP. Signs warning drivers of the possibility of wildlife encounters will be posted in areas of high wildlife activity. A log of collisions will be kept to monitor the effectiveness of the proposed mitigation and additional mitigation measures will be implemented if necessary; and • Implementation of a monitoring plan for Barn Swallow populations in proximity to the proposed mine and transmission line sites and in appropriate control areas. 	<p>Speed limits implemented during 2015. Signs to be installed when roads were transferred to NG. Monitoring plan to be implemented during 2016.</p>	

APPENDIX C: COMMITMENTS REGISTRY

Condition / Tracking #	Description	Status	Date Completed (where applicable)
113	<p>Mitigation measures that will be used to reduce potential adverse effects to all species of Special Concern and Provincially rare species will include the following:</p> <ul style="list-style-type: none"> • Restriction of principal habitat displacement for mine infrastructure to periods outside the breeding bird season which MNR has indicated occurs from May 1 to August 15; • Implementation of sound abatement strategies to dampen sound infiltrating habitats surrounding high traffic areas of the mine; • Where feasible, RRP lighting fixtures will be directed in such a fashion as to reduce excess production of light to the surrounding environment. • Establishment of zones where Black-billed Magpie colonization is desired, tolerated, or not wanted. These measures may be necessary to prevent colonization in areas of high human vehicular activity that could put magpie and magpie breeding success at risk. Discouraging tactics may be implemented to discourage colonization. Conversely, protection may be provided to magpies nesting in other locations where their presence is encouraged and does not cause problems to mine operations. • Enforcement of speed limits along mine controlled roads to reduce the potential for adverse effects of increased vehicular traffic associated with the RRP. Signs warning drivers of the possibility of wildlife 	<p>Mitigation measures were implemented during 2015 including: NG implemented a site specific speed limit which is posted and is also part of health and safety indication for all contractors and employees. NG regularly reminds all site personnel of the speed limit requirements, and Site Security conduct speed monitoring around site.</p> <p>No specific measures were taken regarding Magpie colonization zones during 2015. There is insufficient birds in the area to determine any patterns. This will be considered as needed in the future; however NG prefer to focus on effective waste management measures to reduce the potential for nuisance birds looking for food / garbage.</p>	
113 cont	<ul style="list-style-type: none"> • Inclusion of wildlife awareness information into regular safety inductions performed by the mine. Workers will be made aware of seasonal changes in wildlife behaviour or presence in proximity to the mine; • Treatment of tailings slurry containing cyanide and associated heavy metals in the process plant using the SO₂/Air process before being discharged to the TMA; and • Restoration of disturbed habitats at closure including the development of habitats capable of supporting a diversity of wildlife species, including Species of Special Concern and rare species. 	<p>These measures were implemented during 2015 as applicable. Restoration-related aspects were not applicable to the first year of construction. No tailings were produced during 2015.</p>	
114	<p>Timing of the transmission line construction will be planned to avoid the breeding bird and main tourist season, as possible.</p>	<p>Clearing of the transmission line right of way was initiated during November 2015 and followed these commitments.</p>	
115	<p>Traditional Knowledge/Traditional Land Use (TK/TLU) data has been widely collected for the RRP, including from the closest communities of BGRFN, Rainy River First Nations and Naicatchewenin First Nation. All TK/TLU sessions were community driven, meaning that the method of data collection was community specific. The majority of the data has been broad and overreaching, which NG will continue to respect as it serves as the basis for Aboriginal Persons unique relationship to the land. TK/TLU collection will continue; information collected will be appropriately considered for construction, operation and closure phases. For example, NG will further investigate the historical travel corridor and incorporate appropriately any new information that may become available. (Letter to Chiefs from Kyle Stanfield, October 2013).</p>	<p>One community member from Big Island First Nation identified the potential presence of a significant flower at the site. The community member accompanied the botany crew on July 20, 2015 and concluded that the flower was not recorded during baseline work at the site, but is widely available throughout Ontario in wetland areas. The community member greatly appreciated the opportunity to gain a better understanding of the project area.</p>	
116	<p>NG will share results of the TK/TLU data sessions in a non-public First Nations forum(s). (Letter to Chiefs from Kyle Stanfield, October 2013).</p>	<p>TK/TLU data is owned by individuals and communities. NG has shared available data as requested within specific communities.</p>	
117	<p>NG has an open invitation for First Nations, the MNO and regional stakeholders to participate in all baseline and environmental monitoring programs, including Whip-poor-will, where appropriate and to share monitoring results. NG will continue to advise of the opportunity at public forums in order to encourage anyone who's interested to participate. (Letter to Chiefs from Kyle Stanfield, October 2013).</p>	<p>Because 2015 was the only a partial year and the first year of construction, opportunities to participate in monitoring programs was not widely available. However, Big Grassy First Nation had an environmental monitor on site full time. The environmental monitor worked closely with the entire Environmental Team and was engaged in all monitoring programs, including those for endangered species. Other opportunities included the Elders from Big Grassy, Naicatchewenin and Rainy River First Nations to visit the site and understand the fish relocation program and view the habitat that was constructed for barn swallow. Through various agreements with Aboriginal groups, New Gold has commitments to engage communities through environmental monitoring boards.</p>	

APPENDIX C: COMMITMENTS REGISTRY

Condition / Tracking #	Description	Status	Date Completed (where applicable)
118	Additional information related to Lake Sturgeon and the Rainy River First Nations management program as requested, was added to the Final EA Report. NG has committed to a program of close coordination with Rainy River First Nations in support of the pre-existing First Nation Watershed Program and water quality protection. Company funding will be provided as part of the fisheries compensation program to further water quality enhancement programs for the Pinewood and similar agriculturally-impacted waterways.	This program has not yet been fully instituted as yet. A preliminary water quality training program took place in 2014 with the following participating: Couchiching, Naicatchewenin, Big Grassy and Seine River First Nations (although all 16 First Nation communities were invited to participate). NG is working with the Aboriginal groups to set up an environmental monitoring board in 2016.	
119	NG will reach out to the Seven Generations Education Institute and/or the MNR to obtain any additional information on baseline health of animals and fish. (Letter to Chiefs from Kyle Stanfield, October 2013).	Complete	March 3, 2014
120	Aboriginal People will play an active role in the development of the mine Closure Plan, including development of the monitoring and mitigation programs. While the Closure Plan will be completed prior to construction, NG will consult on significant revisions periodically during operations to ensure incorporation of TK and best management practices. (Letter to Chiefs from Kyle Stanfield, October 2013).	The Aboriginal communities participated in a joint technical review of the Closure Plan.	
121	Monitoring programs targeted at ungulates (moose, deer) will be coordinated with local Aboriginal people. (Letter to Chiefs from Kyle Stanfield, October 2013).	No ungulate monitoring was proposed or occurred during 2015.	
122	NG would be pleased to assemble a map showing the locations of the closest First Nation community water supply intakes on receipt of the locations/coordinates. (Letter to Chiefs from Kyle Stanfield, October 2013).	Water supply intake locations known were included on map provided by NG.	October 1, 2014
123	While the Draft EA has shown no impacts to Aboriginal or non-Aboriginal people's health, any new information that has a potential to impact health will be provided to Aboriginal people. (Letter to Chiefs from Kyle Stanfield, October 2013). Further, NG has committed to analyze ungulate organ meats voluntarily submitted to them by local hunters, with the results of any such analysis made available to local residents and Aboriginal communities.	No new information was obtained or new impacts predicted during 2015 related to the RRP, that could affect the health of Aboriginal people.	
124	NG will work with Aboriginal groups to ensure employee overall well-being. Programs to highlight the dangers of drug use combined with drug testing will be implemented. (Letter to Chiefs from Kyle Stanfield, October 2013).	NG has an employee assistance program available to all employees. RRP employees and contractors are required to commit to be fit for duty (physical, mental and emotional state suitable to work safely). NG continues to commit to work with Aboriginal individuals to ensure there are appropriate cultural considerations, including an Aboriginal liaison on site, locations to conduct ceremony etc.	
125	As a best practice and acting as a responsible neighbour, NG will notify local stakeholders of project activities as appropriate.	NG established a neighbour committee in 2015 to provide information to surrounding residents regarding construction work at the site. As well, quarterly newsletters and other notices with respect to construction activities were mailed out district wide.	
126	NG has and will continue to actively engage the MNR and local outfitters including those that hold the Bear Management Areas that will be affected by the RRP.	As 2015 was a construction year, the focus was to keep stakeholders safe and advising of active construction zones and avoidance where necessary.	
127	NG will calculate the area of forest land that will be removed from the total forest land within BGRFN territory, utilizing public sources and provide this information to the First Nation on delineation of the traditional territory by the BGRFN.	NG has a Participation Agreement with BGFN, but provides consideration for this commitment.	
128	NG is consulting with First Nations and the Métis Nation of Ontario (MNO) on the Draft Closure Plan provided on March 19, 2014. NG has provided resources to these communities to undertake independent review the Draft document. Results of the independent review process will be used to help the Company develop any further commitments and/or mitigations to reduce potential impacts to Aboriginal and treaty rights. This process is expected to be completed concurrent with the conclusion of the EA process.	Nine First Nations and the MNO confirmed participation in the Draft Closure Plan technical review. The results of these independent technical reviews were submitted to NG in September 2014, with detailed responses provided and revisions made to the Closure Plan submitted in 2015 as appropriate based on the comments received. The Closure Plan was accepted as filed by the Ministry of Northern Development and Mines on February 23, 2015, shortly after positive decisions on both the Federal and Provincial EAs.	
129	NG is open to discussing closure objectives in relation to the results of the Traditional Knowledge / Traditional Land Use (TK / TLU) study.	NG remains open to this discussion ongoing. No specific comments received in 2015.	
130	NG is supportive of the further development of mitigation measures in relation to traditional hunting (and plant gathering), which could potentially involve: <ul style="list-style-type: none"> • Continuing to involve BGRFN members in the development of adaptive management techniques related to closure planning, including the rehabilitation of habitat for wildlife; and • Restoring access to RRP lands following mine closure to the extent that such access is safe / possible. 	NG remains committed to providing access. Consideration will be provided upon completion of construction activities.	

APPENDIX C: COMMITMENTS REGISTRY

Condition / Tracking #	Description	Status	Date Completed (where applicable)
131	NG has committed to provide members of the BGRFN, Big Island First Nation, Ojibways of Onigaming First Nation, Naotkamegwaning First Nation, Rainy River First Nations, Naicatchewenin First Nation and Métis represented by the MNO Region 1 Consultation Committee, the ability to access certain lands that NG is able to make available for gathering of wild medicines, berries or other vegetation. Access will be coordinated with the Aboriginal communities.	NG remains committed to providing access to all areas of the site that are safe to do so. During construction, access is more limited as there is heavy equipment and construction activities in numerous areas. In 2015, Aboriginal communities accessed a designated ceremonial area on Gallinger Road; access to other areas was allowed when it was safe to do so and with site personnel present.	
132	NG has committed to ensure that Aboriginal communities (including BGRFN, Big Island First Nation, Ojibways of Onigaming First Nation, Naotkamegwaning First Nation, Rainy River First Nations, Naicatchewenin First Nation and Métis represented by the MNO Region 1 Consultation Committee) have the ability to access the site for cultural and ceremonial purposes so that local Aboriginal people can undertake ceremonies at different times of the year to show respect for the land and its spiritual aspects. This will ensure that young people can participate in ceremonies and learn from elders and ceremonialists. Teaching through the generations will therefore be maintained.	NG remains committed to the opportunity for ceremony. NG hosts two ceremonies each year, one in Spring and one in Fall. In 2015 an individual from Big Island First Nation conducted a personal ceremony; two ceremonies before the start of construction and one ceremony prior to the first blast in the open pit.	
133	A detailed Fire Response Plan will be developed (Final EA Report, Section 8.2). This document will be made available for MNR review prior to construction initiation.	Completed.	Reviewed by MNRF September 3, 2015. Completed September 9, 2015.
134	NG will engage with local stakeholders as appropriate to provide notification of project activities and to mitigate potential impacts as practical.	NG established a neighbour committee in 2015 to provide information to surrounding residents regarding construction work at the site. As well, quarterly newsletters and other notices with respect to construction activities were mailed out district wide.	
135	<p>Related to the transmission line:</p> <ul style="list-style-type: none"> • Compensation will be provided for merchantable timber value where applicable; • Maintain transmission line set back distances of not less than 100 m from area lakes to provide effective visual screening from open waters; • Landscape screening to minimize the contrast in landscape character; for example by leaving shrub cover vegetation that will not affect the conductors (i.e., the wire) in the ROW at creek crossings; and • Minimizing land use conflicts and concerns by consulting with other users and stakeholders (i.e., Aboriginal peoples, hunters, trappers, outdoor recreationalists) to identify and implement other means of conflict resolution. 	NG proactively placed newspaper advertisements to advise recreational users of construction activities along the transmission line during the hunting season in 2015, as well as engaged with the Clearwater Association.	
136	NG will implement a hiring policy that encourages employment of local workers, including members of human environment regional study area First Nations and Métis communities. Where feasible, goods and services will be procured from local and regional suppliers as well as suppliers that can further demonstrate Aboriginal employee content. Provide on the job Common Core training to assist local workers to develop mining-specific skills, and implement career training and development opportunities for employees once hired. NG will provide continuous, on the job safety training.	In 2015, NG implemented a Human Resource Strategy that focused on local employment. Also in 2015, 17 career fairs were held in the region. NG also hired a business development officer to support local businesses in providing goods and services to the project.	
137	NG will continue to engage with potentially affected stakeholders as the project develops, including those local and regional businesses which may provide accommodation facilities for the RRP workforce.	NG continues to send out newsletters and engage with local stakeholders including Chambers of Commerce.	
138	Fish habitat compensation will be provided onsite related to the Federal <i>Fisheries Act</i> . A portion of this compensation habitat, notably the Clark Creek, Clark Creek pond and Teeple pond, could potentially be provided to licensed bait fishermen	Bait fishermen with a license in the area have shown an interest and NG was working towards access agreement(s) in 2015.	
139	NG respects BGRFN's Aboriginal and Treaty Rights, and is working with the community to develop a collective agreement that will include mutually acceptable means for mitigation of accepted impacts.	NG and BGRFN signed a participation agreement on January 9, 2015.	January 9, 2015
140	Where NG has control, commercially reasonable efforts will be made to work with Resolute, MNR and local loggers to facilitate the use of merchantable timber by local mills, in recognition of the importance of mills to the local economy.	A local logging company was utilized to remove merchantable timber during 2015, as needed to support project development.	
141	NG will make reasonable efforts to accommodate Resolute in providing access through NG lands to Crown lands over which Resolute has an interest provided that the access does not interfere with mine construction or operation; that the access does not put the safety and security of NG or Resolute personnel or property at risk; and subject to the prior execution of any land access agreement(s) which NG deems appropriate.	There were no requests for access during 2015.	

APPENDIX C: COMMITMENTS REGISTRY

Condition / Tracking #	Description	Status	Date Completed (where applicable)
142	As the mine approaches the end of mine life, NG will implement strategies to transition the workforce to buffer the effects of job losses, as well as an Adjustment Committee.	Not applicable during 2015 (construction phase)	
143	The health and safety of workers will be ensured by meeting applicable occupational health and safety legislation standards, as well as utilizing other best management practices for industrial hygiene hazard control as appropriate.	NG strives to meet or exceed or health and safety regulatory requirements. We provide / ensure that all workers have the necessary personal protection equipment to protect against industrial hygiene exposures.	
144	While the Draft EA has shown no impacts to Aboriginal or non-Aboriginal people's health, any new information that has a potential to impact health will be provided to Aboriginal groups. (Letter to Chiefs from Kyle Stanfield, October 2013). NG has committed to analyze ungulate organ meats voluntarily submitted to them by local hunters, with the results of any such analysis made available to local residents and Aboriginal communities.	No new information was obtained or new impacts predicted during 2015 related to the RRP, that could affect the health of Aboriginal people.	
145	NG will work with Aboriginal groups to ensure employee overall well-being. Programs to highlight the dangers of drug use combined with drug testing will be implemented. (Letter to Chiefs from Kyle Stanfield, October 2013).	NG has an employee assistance program available to all employees. RRP employees and contractors are required to commit to be fit for duty (physical, mental and emotional state suitable to work safely). NG continues to commit to work with Aboriginal individuals to ensure there are appropriate cultural considerations, including an Aboriginal liaison on site, locations to conduct ceremony etc.	
146	A blasting plan will be developed describing all proposed blasting operations at the RRP site. All personnel who handle explosives will have appropriate training; all other individuals will be restricted from access.	Blasting plans are developed with NG Mine Engineering Group with Dyno (Consultants). Dyno is providing supervision and training for employees handling explosives. All other individuals are restricted from access by a locked gate and the pit access procedures.	
147	Recognizing that safety of workers is paramount, NG will attempt to reduce light pollution as possible.	This approach was taken during 2015.	
148	The RRP has been designed to meet all applicable fire protection system requirements and codes. Regular fire drills will occur to ensure that all workers are familiar with fire response procedures, as dictated within the environmental management system. All workers and visitors on site will receive an orientation which includes fire reporting and response procedures.	All personnel on site receive a site orientation. The site has acquired a fire truck and established an Emergency Response Team in place to respond to fires.	
149	Should it be determined in the future that additional fire break is required, appropriate approvals will be obtained from the MNR.	No additional fire break was determined to be required during 2015.	
150	NG will ensure that safe access to properties is maintained during the construction and operation phases of the project. Once detailed plans are progressed, NG would welcome the opportunity to discuss further.	Within the project footprint NG purchased property from former landowners. For the residents of Tait Rd, NG worked cooperatively with the two landowners during 2015 to ensure safe access to their properties, including working with the landowners to accommodate safe transportation to school for their children during construction near their home. Signage and gates are in place to ensure safe access to site. Security monitor site access and also physically man the access gate on the Highway 600.	
151	Any infrastructure, such as hydro services, that require relocation will be completed as expediently as possible, to minimize disruption to local users. It is currently envisioned that the disruption will only occur during the switchover from the existing to the (at that time) newly built line.	All infrastructure work in 2015 resulted in minimal disruption to local users.	
152	The re-aligned Highway 600 will be constructed by NG to MTO standards so that NG can pursue transfer of the road to the Province after construction.	The approach was taken during the detailed design and during 2015 construction.	
153	NG has had extensive consultations with the MTO in Thunder Bay related to the RRP highway planning and will continue to discuss issues related to the Highway 600 re-alignment, and associated maintenance and safety issues with MTO, the Township of Chapple, Stratton, the Rainy River Valley Safety Coalition, school bus operators, utility companies and emergency response groups.	In 2015, NG had extensive discussions with the MTO, Township of Morley, Township of Chapple and Hydro One on the Highway 600. The re-aligned Highway 600 was opened to the public on December 23, 2015. NG has had contact with the Rainy River District School Board who operates the school bus, but due to privacy concerns, the School Board does not discuss specific bus routes. NG had no discussions with the Rainy River Valley Safety Coalition during 2015.	
154	A new East Access Road will connect Highway 71 with Roen Road by means of Korpi Road, to provide access for the general public, including to properties on Marr Road and for users of Crown land north of the site.	Approvals for construction of the East Access Road were received during 2015 and the road was under construction.	

APPENDIX C: COMMITMENTS REGISTRY

Condition / Tracking #	Description	Status	Date Completed (where applicable)
155	NG will schedule the delivery of major equipment at off peak times where practical and ensuring that heavy loads are sized appropriately and transported only on highways that have sufficient load capacities while observing half-load seasonal restrictions.	All load transport requirements and restrictions were met during 2015.	
156	Only licensed suppliers and carriers will be selected for the supply and transport of hazardous materials to the RRP site. When suppliers are selected, Rainy River will share supplier handling and transport information with the MNO.	NG requires all vendors to follow the Ontario Legislation for transporting hazardous materials as committed to during the EA process. There was no unique information to share with MNO during 2015. For clarity, the commitment was made to MNO (MNO-3) in relation to a question primarily about cyanide management and transport. There was no shipping of cyanide during 2015.	
157	Drivers will be required to meet all applicable regulatory training requirements, be trained in spill response procedures for the materials they transport, and carry the appropriate Material Safety Data Sheets.	NG requires all vendors to follow the Ontario Legislation for transporting hazardous materials. NG Contracts Department does not allow the start of work before documented proof of training is supplied by contractor.	
158	Vehicles transporting materials to site will be required to maintain a supply of basic emergency response equipment, including communication equipment, first aid materials and a fire extinguisher, where appropriate.	All vehicles travelling onsite are required to have spill kit, first aid kit, fire extinguisher and radio. If this equipment is not installed, the vehicle is escorted.	
159	Notification and/or reporting of any vehicular accidents and spills will follow Provincial (Ministry of the Environment) and other applicable requirements.	All Provincial and other applicable notification and reporting requirements were followed with respect to the single vehicle accident that occurred during August 2015.	
160	With regards to controlling adverse traffic effects during transmission line construction: • Ensuring that NG employees and contractors / subcontractors adhere to posted speed limits and practical speed limits along the ROW; • Contractors and their subcontractors will be required to have properly and seasonally maintained equipment; and • Maintain regular communications with the Township of Chapple, the MTO and Ontario Provincial Police representatives, to monitor and mitigate traffic effects.	NG regularly remind all site personnel of the speed limit requirements, and Site Security conduct speed monitoring around site. Regular communications between Chapple, MTO and OPP are maintained. Specifically OPP have been requested to provide additional traffic monitoring on site access roads to reduce the likelihood of speeding and poor driving behaviours.	
161	NG will monitor regional housing supply, particularly in the Chapple, Emo, and Fort Frances markets during the planning and construction phase of the RRP and in advance of each wave of new operations employment. Engage in regular discussions with Municipal planning officials in these communities to understand the anticipated evolution of their resale and new-home markets, and the extent to which each community desires growth or does not. NG will continue to work with hoteliers and town officials, to help avoid possible construction employment demands that would negatively affect accommodation capacity needed to support the tourist season.	To alleviate pressures on regional housing supply and hoteliers, during 2015 NG has: 1) contracted a local Aboriginal business to provide a 400 person accommodation facility for construction workers who are contracted by New Gold. The accommodation facility is located on Atkinson Road in Chapple Township. Atkinson Road is located 1.5km south of the junction of Barwick Road and Highway 600 (or approximately 5 km south of the open pit). The accommodation facility was built by Onikaajigan Construction, a partnership between Rainy River First Nation, Naicatchewenin First Nation and Saulteaux Consulting and Engineering. It is owned and operated by Onikaajigan Construction. New Gold exclusively leases the camp facility for the purpose of housing out of town construction workers. 2) committed to local employment 3) developed an employee incentive program to support new housing development 4) working with local developers to construct new accommodation in the region	
162	Develop suitable policies and initiatives to encourage car pooling amongst employees, with the aim of reducing commuter-related traffic and reducing the individual burden of commuting. NG may explore alternate accommodation strategies to support its employees.	Buses are used to transport employees to site from Emo, Chapple Fire Hall and Atkinson Camp (a locally run facility). Buses are also used to transport employees from the Atkinson Camp to Thunder Bay and Winnipeg airports.	
163	NG will continue to discuss the RRP and potential additional demands that could be placed on the services of regional Municipalities. NG will continue to support government-led initiatives that support social sustainability during all project phases. NG will work with local service agencies to gather information about social issues or service capacity issues so that they may be addressed in a collaborative manner. NG will maintain communications with local and regional service providers to monitor and work collaboratively to address any Project-related changes that may be experienced.	NG provides public presentations, works with the Chambers of Commerce, holds regular meetings with Chapple and provide updates at the Rainy River District Municipal Association.	

APPENDIX C: COMMITMENTS REGISTRY

Condition / Tracking #	Description	Status	Date Completed (where applicable)
164	Potential health risks associated with the consumption of ungulate organ meats will be mitigated through the voluntary submission of organ meats by local hunters for analysis. Results of any such analysis would be made available to local residents and Aboriginal communities.	Program not instituted during 2015	
165	NG has committed to undertaking a mitigation program related to cultural heritage landscapes and built heritage resources consisting of an illustrated history of the study area.	An illustrated settlement history was completed by Dan Morisseau in 2015. NG is working with Chapple Heritage Committee on editing and distribution. Once the document is complete, it will be distributed to MOECC and MTCS.	
166	Emergency response procedures will be established as part of the environmental management system. After any incident, a review will be conducted to ensure that the required design changes and procedures and appropriate monitoring measures are in place to ensure that incident will not be repeated.	The complete EMS is not yet developed although an emergency response interim plan is in place that includes environmental aspects such as spills and structure failure. The comprehensive EMS will include emergency response procedures relevant to environmental management, as well as reference to the site specific emergency response plan.	
167	NG has committed to ensure that First Nations (including Rainy River First Nations, Naicatchewenin First Nation, Big Grassy River First Nation, Big Island First Nation, Naotkamegwanning First Nation, and Ojibways of Onigaming First Nation) and Métis community members have the: <ul style="list-style-type: none"> • Ability to access the site for cultural and ceremonial purposes, so that local Aboriginal people can undertake ceremonies at different times of the year to show respect for the land and its spiritual aspects. • All NG staff will undergo cultural awareness training. Temporary contractors will undergo an awareness program as part of the regular induction program when working at the mine (Letter to Chiefs from Kyle Stanfield, October 2013). This will ensure that people that work at the site are aware of indigenous culture and values, and are respectful of the principles and values of the Ojibwe people. <p>This mitigation has been identified as a result of the Draft EA independent First Nation review and agreed to by NG. NG will follow up directly with the BGRFN regarding any additional mitigation and accommodation measures.</p>	NG is committed to providing access to the site for cultural and ceremony purposes. All NG staff undergo Cultural Awareness training as part of their site induction. Contractors also receive Cultural Awareness as part of their site induction.	
168	NG is fully agreeable to work with local Aboriginal peoples on an ongoing basis to monitor metal concentrations in country foods (notably fish muscle and liver tissues, and White-tailed Deer liver tissue; and other wildlife tissues as appropriate. A commitment to work with local Aboriginal groups to sample White-tail Deer liver tissues [and other wildlife tissues as committed to herein] for metals analysis has been made. This analysis could be expanded to include testing for additional metals. NG will work with local Aboriginal hunters to determine the most effective path forward on this topic.	NG remains committed to working with Aboriginal people to monitor metal concentrations. Fish tissue monitoring for metal concentration took place at the site in 2015. The report is anticipated to reviewed and distributed during 2016.	
169	NG will conduct a risk assessment of the potential long-term exposure of fish and wildlife to accumulated metals within the constructed wetland. Such a study will be carried out within one to two years prior to mine closure (or earlier during the project operations phase), and if a meaningful risk is determined to exist the risk will be mitigated as part of overall mine closure by removing and disposing the contaminated sediments to the bottom of the pit lake. This could readily be accomplished by a small dredging operation.	Not applicable during 2015 (construction phase).	
170	Unterman McPhail will prepare a complete description of the evaluation process for resources identified of cultural heritage value or interest in a memo format.	This memo was completed September 11, 2013.	September 11, 2013.
171	At closure, NG will undertake an evaluation of any remaining cultural heritage resources / structures located on NG property in consultation with a qualified professional, and also incorporating any liability/public safety concerns.	Not applicable to 2015 (closure activity).	

APPENDIX C: COMMITMENTS REGISTRY

Condition / Tracking #	Description	Status	Date Completed (where applicable)
172	A range of conservation approaches will be considered in the recommended Cultural Heritage Assessment Report / Cultural Heritage Documentation Reports for Sites #11 and #13 as suggested by MTCS.	Site #11 was demolished as it was deemed to be hazardous as it was not structurally fit. Unique features, such as blacksmith hardware were removed and are currently in storage. As part of the development of the Richardson Trail, NG intends to highlight the settlement history through artifacts such as the hardware. Prior to the demolition, NG had contacted a representative of the Chapple Heritage Committee to ensure there were no other considerations. Site #13 remains in situ. A descendent of the builder has expressed an interest in relocating the structure; NG is open to considering the move of the structure.	
173	NG will provide follow-up documentation related to Cultural Heritage Assessment Report / Cultural Heritage Documentation Reports to the following local museums and archives: • Chapple Museum; • Kay-Nah-Chi-Wah-Nung Historical Centre (Manitou Mounds); • Rainy River District Women's Institute Museum; and • Fort Frances Museum and Cultural Centre.	Completed on April 14, 2015. A number of former local residents have come forward to request copies of the reports which NG provided.	April 14, 2015
174	Monitoring would occur for the following durations: • Archaeology: construction phase • Built heritage: construction phase	NG has completed a thorough investigation for cultural resources within the project area (Woodland Heritage Resources and Unterman McPhail). In addition, all NG employees are advised during their induction of the potential of cultural resources and advised to stop work should potential resources be identified.	
175	With regards to protection of cultural heritage values during transmission line construction: • Should human remains be identified during construction, all work in the vicinity of the discovery will be suspended immediately, and notification will be made to the Ontario Provincial Police, or local police, who will conduct a site investigation and contact the district coroner. Notification must also be made to the Ministry of Tourism, Culture and Sport, and the Registrar of Cemeteries, Ministry of Government Services. • Should cultural heritage resources (archaeological or historical materials or features) be identified during construction or operations, all activity in the vicinity of the find will be suspended and the Ministry of Tourism, Culture and Sport archaeologist be contacted. This condition provides for the potential for deeply buried sites not typically identified; and • In addition, NG will continue to engage Aboriginal people (including Rainy River First Nations, Naicatchewenin First Nation, Big Grassy River First Nation, Big Island First Nation, Naothkamegwanning First Nation, Ojibways of Onigaming First Nation and Métis community members) about the transmission line construction and will respond should additional culturally significant areas be identified that could be impacted by the construction.	No human remains or cultural resources were identified during transmission line clearing etc. in 2015.	
176	Related to transmission line, construction will be supervised by a qualified archaeologist at identified areas of high archaeological potential. Regular, ongoing discussions with stakeholders, Aboriginal people and local communities will help to monitor any effects to the socio-cultural environment and identify mutually satisfactory ways to mitigate negative or enhance positive effects. A formal complaints procedure will be established to provide stakeholders and Aboriginal peoples a voice during the construction, operation and decommissioning phase of the transmission line project. A response protocol will also be established to ensure that follow up occurs.	Prior to construction activities, NG conducted the required assessments on the transmission and line, which included the field assessment of high potential areas as per the 2011 Standards and Guidelines for consultant archaeologists. NG also employs a qualified archaeologist and in 2015 had consultant archaeologist on site. No cultural resources were identified during construction. NG completed and submitted an external feedback procedure to MOECC on February 2, 2015.	
177	A targeted site investigation will be conducted at the end of mine life to identify soils that may have been affected by hydrocarbons or chemicals in specific areas (e.g. truck refueling area). Soil materials found to exceed the appropriate clean up criteria for hydrocarbons will be remediated according to government requirements. If there is reason to suspect an area of soil has been affected by chemicals other than hydrocarbons, soil samples will be collected and tested. If the applicable regulatory requirements are exceeded, an appropriate method of disposal will be sought in consultation with the relevant authorities.	Not applicable during 2015 (construction phase)	
178	Document and respond to comments, issues or concerns.	An External Feedback and Compliant Protocol was issued in follow up to the Provincial EA approval and was implemented during 2015.	

APPENDIX C: COMMITMENTS REGISTRY

Condition / Tracking #	Description	Status	Date Completed (where applicable)
179	NG made 13 significant commitments (Tables 3-4 and 14-2) arising from the independent technical review of the Draft EA Report (Version 1) on behalf of Aboriginal groups which will be fulfilled.	These commitments were all met as described in this registry, or through negotiated agreements (non-public).	
180	BGRFN undertook a second independent review of the Draft EA Report provided to the NG on October 18, 2013. The review concluded that additional work with the community was required and NG has committed to continuing the close engagement with the community in support of the RRP development.	BGRFN and NG signed a Participation Agreement on January 9, 2015. In the agreement there is a defined protocol for communication and engagement.	
181	Environmental monitoring will be conducted in accordance with standard practice and regulatory requirements, including any site-specific environmental approvals.	Completed during 2015 as applicable.	
182	Operational procedures to minimize the potential of accidents or malfunctions will be incorporated into the environmental management system. Penalties will be imposed for operational violations.	The EMS was in development during 2015 (and is ongoing) which will include these aspects.	
183	Procedures will be regularly reviewed as part of the environmental management system.	The EMS was in development during 2015 (and is ongoing) which will include these aspects.	
184	The emergency response plan included in the environmental management system will address the primary hazardous materials on site including procedures for spill response on the trucking route to the RRP site.	The EMS was in development during 2015 (and is ongoing) which will include these aspects.	
185	All chemicals used at the site will have a Material Safety Data Sheet, in order to comply with the best practices in the industry for health and safety, and to provide relevant regulatory standards for the safe use of these materials.	These sheets are provided to the Environmental Department by Procurement, as applicable and used as needed.	
186	Monitoring details will be developed through ongoing stakeholder consultation during the EA process, and through conditions placed on regulatory instruments such as permits, authorizations and approvals, issued by the Federal and Provincial regulatory agencies.	Completed during 2015. The majority of the approvals required for construction and operation were received during 2015.	
187	A Follow up Monitoring Program (FMP) is provided in Section 13 of the Final EA Report, which subject to modification through the EA review process, will be implemented by NG in the manner and schedule identified, to: <ul style="list-style-type: none"> • Verify the accuracy of the environmental assessment of a designated project; and • Determine the effectiveness of any mitigation measures. 	Limited FMP was completed during 2015 as it was the first year (and only a partial year) of construction.	
188	Subject to acceptance in writing of the FMP by the Federal and Provincial governments, monitoring results will be provided to the parties involved in the FMP annually during the construction and operation phases of the RRP.	No FMP annual reports were issued during 2015.	
189	A list of FMP commitments made during the EA process will be maintained by NG, indicating where appropriate: <ul style="list-style-type: none"> • The nature of the commitment; • To whom, or to what group or agency the commitment was made, if specific; • Whether the commitment is related to the EA process alone; • Whether the commitment is addressed or linked to a regulatory instrument, such as a regulation or environmental approval; • Any applicable timeline if any; • The status of the commitment; and • Additional actions required to fulfil the commitment 	This table addresses the master list of commitments.	
190	Environmental aspects and potential impacts of the project will be managed within an environmental management system which integrates environmental performance with overall project management.	The EMS is in development and on going. NG Corporate and the RRP have some environmental policies and procedures in place. This is anticipated to progress more formally in 2016, following an external gap analysis. A component of the EMS will manage and track the environmental aspects and impacts.	
191	Implementation and maintenance of the environmental management system will be driven by the NG commitment to ongoing compliance with the environmental requirements. Worker awareness of this commitment and requirements related to their work will be communicated through formal programs such as project orientation, job training or contractor packages.	The EMS was in development during 2015 (and is ongoing) which will include a training and review component.	
192	Periodic management reviews will completed to consider changing circumstances which could affect the continued suitability and adequacy of the monitoring plans, and to support continual improvement in overall effectiveness.	The EMS was in development during 2015 (and is ongoing) which will include a review component.	
193	NG proposes to amend the Closure Plan periodically as more information becomes available and as required by the Ontario <i>Mining Act</i> .	No amendments were completed during 2015. New Gold has been working on a CPA but no amendments were received in 2015. The reporting period for this ACR is from March 31, 2015 to December 31, 2015.	

APPENDIX C: COMMITMENTS REGISTRY

Condition / Tracking #	Description	Status	Date Completed (where applicable)
194	NG is proposing to work with Aboriginal groups including Rainy River First Nations, Naicatchewenin First Nation, Big Grassy River First Nation, Big Island First Nation, Naotkamegwaning First Nation, Ojibways of Onigaming First Nation and Métis community members to provide access to alternative private lands for the purposes of supporting TLU on such lands; and potentially providing compensation or incentives through collaborative agreements between the Aboriginal groups and NG. Access will be coordinated with the Aboriginal groups.	NG has negotiated agreements with Rainy River First Nations, Naicatchewenin First Nation, Big Grassy First Nation and the Metis Nation of Ontario. NG continues to actively engage with Big Island First Nation, Ojibways of Onigaming and Naotkamegwaning First Nation.	
195	NG will communicate with Aboriginal groups including Rainy River First Nations, Naicatchewenin First Nation, Big Grassy River First Nation, Big Island First Nation, Naotkamegwaning First Nation, Ojibways of Onigaming First Nation and Métis community members on traditional teachings and ceremony.	NG hosts two annual ceremonies at site; additionally Aboriginal liaison personnel meet with community members to discuss the project, activities, ceremony, etc.	
196	NG will review the BGRFN TK / TLU study and discuss accommodations of the cultural heritage sites identified.	This was addressed during Participation Agreement discussions that was signed on January 9, 2015	9-Jan-15
197	<p>Related to transmission line construction, environmental monitoring will include (but will not be limited to) inspection of:</p> <ul style="list-style-type: none"> • ROW to ensure excessive vegetation clearing is not conducted; • Appropriateness of equipment choice and maintenance of equipment to minimize environmental impacts; • Effectiveness of erosion control measures where applicable; • Construction activities and equipment operation, including refueling exercises; • Waste management, including wood waste from clearing and domestic wastes; • Monitoring of remedial actions associated with malfunctions and accidents (if any); and • Any requirements contained in environmental approvals and permits required to construct the transmission line. <p>At a minimum, weekly inspections by a qualified person will occur of worksites and related areas, during clearing of the ROW and construction of the transmission line. Contractors will be required to have properly trained personnel to provide guidance to construction teams in the absence of the qualified environmental persons. The results of the inspections will be documented and follow-up actions, if any, delineated. Completion of follow-up actions will be confirmed during subsequent inspections. Inspection frequency will be increased should the need be identified. The duration of post-construction inspections, will depend on the results of the construction inspection. At a minimum, periodic aerial inspection will occur for environmental aspects during operation, coincident with other aerial surveys.</p>	Monitoring of these aspects was completed during 2015 as applicable. NG and the Contractor conduct weekly inspections during working periods.	
198	NG will continue to communicate closely with First Nations and the MNO regarding the Project. (Letter to Chiefs from Kyle Stanfield, October 2013).	NG has several Participation Agreements / Impact Benefit Agreements in place which identify ongoing communication protocols. In addition, NG provides regular updates through newsletters, public presentations and individual meetings and emails with community representatives.	
199	NG is committed to working closely with the MNO. NG has provided resources to the MNO to undertake traditional studies as well as technical reviews of both the Draft EA as well as the Draft Closure Plan. NG will continue to support the MNO as part of the EA process and as mine operations begin.	NG has a Participation Agreement with the MNO and continues with regular engagement on the RRP.	
200	NG is committed to working closely with the area First Nations and the MNO. NG has provided resources to Aboriginal Groups to undertake traditional studies as well as technical reviews of both the Draft EA as well as the Draft Closure Plan. NG will continue to support First Nations as part of the EA process and as mine operations begin.	NG actively engages all Indigenous groups about the Rainy River project, through newsletters, face to face meetings, site tours, business opportunities and job postings. Condition 9 of the EA approval is being fulfilled, although the level of engagement is directed by the communities.	
201	NG will commit to clearing of flammable debris within a minimum 30 m buffer area.	NG do not leave a fuel source (cut trees) adjacent to standing trees.	
202	NG is committed to continuing to engage potentially affected stakeholders as development and operation of the RRP progresses. Local municipalities will be engaged specifically in regards to contingency and emergency response procedures, prior to construction start. MNR coordination will be undertaken as appropriate.	NG engages stakeholders on a regular basis through presentations, newsletters, etc. NG is also involved in Mutual Aid.	

APPENDIX C: COMMITMENTS REGISTRY

Condition / Tracking #	Description	Status	Date Completed (where applicable)
203	NG is committed to further discussions with potentially affected Aboriginal groups with respect to development of a protocol for the preservation of artifacts. Where practical and reasonable, artifacts that require removal will be transferred to a public institution selected through consultation with local First Nations and Métis represented by the MNO Region 1 Consultation Committee, in consultation with the MTCS. A MTCS collection transfer form will be completed by the surrendering licensee and the institution accepting the materials. Collection shall be curated to current standards.	NG will work with local Aboriginal groups on the transfer of artifacts. No artifacts were transferred from the archaeologist during 2015.	
204	NG will develop an accommodation with local trap line holders that meets the needs of both the proponent and the trappers.	NG is currently developing access agreements with two harvesters. During the construction phase, access to harvest areas will be limited for health and safety reasons.	
205	NG will enhance components of the Richardson Trail and mitigate the impacts in collaboration with local landowners.	NG will initiate this commitment during the operations phase of the development, as it will be much safer to access particular areas at that time.	

APPENDIX D

FOLLOW UP PROGRAM REGISTRY

APPENDIX D: EA FOLLOW UP MONITORING REGISTRY

Condition / Tracking #	Description	Status	Date Completed (where applicable)
13.1	<p>RRR expects that it will be responsible to carry out the FMP; and further, that the involved Federal and Provincial agencies and authorities will have a review and monitoring role regarding the implementation of the FMP by RRR and will require RRR to take corrective action for non-compliance as appropriate. Local Aboriginal groups are considered by RRP to be involved parties for the purposes of the FMP, and accordingly, local First Nations and Métis will be provided the results of the FMP.</p>	<p>Limited FMP was completed during the 2015 (March 31 to December 31) by NG, as it was the first year (and only a partial year) of construction. In December 2015 issues arising around a crack in one of the dams at the Water Management Pond resulted in a Stop Work Order being issued by the MNRF. Follow up monitoring required as a result of the Stop Work Order is related to geotechnical reviews and compaction testing.</p>	
13.2.2	<p>For fugitive dust from roads, stockpiles and open pit operations, RRR will assess the effectiveness of planned dust control measures both visually by plume assessment, and using dust fall jars and high-volume samplers for total particulate and PM2.5. Dust fall samples will be collected monthly during the non-winter period for the construction, operation and active reclamation project phases. Select filter samples will be assessed for metals (full metal scan and including mercury, arsenic, cadmium and lead). Two monitoring stations will be set up at the approximate property boundary locations shown in Figure 13-1 subject to power availability and location specific constraints. Equipment siting, operations, auditing and reporting will following all appropriate MOE requirements as provided in the Operations Manual for Air Quality Monitoring in Ontario (MOE 2008).</p>	<p>Monitoring has been ongoing at the RRP since May 2015. Two air quality sampling stations were established in May 2015: one to the south of the Site near the beginning of the Highway 600 reroute on Tait Road, and one to the east of the Site on Gallinger Road. Dust fall jars were also established in 2015. Passive filters for NO₂ and SO₂ were installed in May 2015 and are collected and analyzed monthly.</p>	
13.3.2	<p>Subject to consultation and support from area residents and the regulatory agencies, RRR plans to measure sound levels at (or near) residences positioned around the RRP site (Figure 13-1). These would include:</p> <ul style="list-style-type: none"> • One residence to the south of the mine site in Black Hawk; • One residence to the east of the mine site on Gallinger Road; • One residence to the southeast of the mine site on south Gallinger Road; • One residence to the west of the mine site in Dearlock; and • One residence to the northwest of the mine site on Highway 600. <p>A dedicated remote monitoring system may be used to provide a real time access system. All sound monitors will conform to MOE NPC-103 measurement protocols. As per MOE protocols, sound level measurements are to be taken at each measurement location. Hourly Leq, L10, L90 and Lmax will be recorded. Audio samples based on trigger levels will also be recorded. Trigger levels, with automated alerts will be developed for addressing exceedances.</p>	<p>As 2015 was only a partial year of construction and there were no complaints, sound levels were not measured, except as related to ESA permit requirements.</p> <p>A dedicated remote monitoring system was not established during 2015.</p>	

APPENDIX D: EA FOLLOW UP MONITORING REGISTRY

Condition / Tracking #	Description	Status	Date Completed (where applicable)
13.4.2	<p>In addition, RRR will carry out the following geochemical monitoring program:</p> <ul style="list-style-type: none"> • As part of the ongoing mine rock management plan, collect and analyze blast hole drill cuttings for analysis of total inorganic carbon and total sulphur, using a Leco furnace, as a means of segregating PAG and NPAG materials for optimal management of PAG mine rock; • Submit a subset of Leco furnace samples, collected as part of the ongoing mine rock management plan, for acid base accounting static testing and metals analysis; • Collect and analyze mill composite tailings samples, on an approximate monthly basis, for acid base accounting static testing and metals analysis; and • Conduct additional geochemical testing on an as required basis to provide further information on Project specific aspects, such as any conditions of note evolving out of developing trend analyses. 	<p>A Geochemical Monitoring Plan for the Construction and Operation Phases was issued in accordance with MOECC ECA 5178-9TUPD9 requirements, and has been implemented at the RRP site. Monitoring was ongoing during 2015. During 2015, this included analyzing blast hole drill cuttings using a Leco furnace and submitted a subset for ABA and metals analysis, per the commitment.</p>	
13.5.2	<p>The following surface water system monitoring is proposed.</p> <p>A. Collect and analyze samples, and measure rates of flow, as appropriate, from site discharges, and runoff and seepage collection facilities, at the start of their respective operations, including:</p> <ul style="list-style-type: none"> • TMA discharges to the Pinewood River both directly by pipeline discharge and through the constructed wetland; • Sedimentation Pond #1 and #2 discharges to West Creek; • Aggregate operation(s), discharges (if any); • Sewage effluent discharge; and • Runoff and seepage collected from site operations areas (TMA, overburden and mine rock stockpiles, plant site area and haul roads) in accordance with MMER and Environmental Compliance Approval requirements. 	<p>This monitoring program is in place; however, there was limited site discharges during 2015.</p> <p>The only discharge was from the temporary sedimentation pond on plant site. Discharges met the environmental approval requirements, with the exception of one instance of an elevated total suspended solids concentration which was subsequently determined to be a result of laboratory error.</p>	
13.5.2	<p>B. For each of the above, where there is a discharge to a receiver (West Creek or Pinewood River) monitor on a monthly basis (commencing at least three months before the first anticipated discharge / release) the quality of waters upstream and downstream of discharge and runoff / seepage releases at proposed monitoring locations shown in Figure 13-2, inclusive of three stations on West Creek and five stations on the Pinewood River (including Pinewood River baseline monitoring stations SW10, SW3 and SW15. The two current baseline monitoring stations on the Rainy River (SW16 and SW17) would also be maintained for monthly monitoring. Quarterly samples from selected water quality sampling stations will be collected for trace analysis of total and methyl mercury in discussion with the MOE.</p>	<p>There were no such discharges during 2015.</p>	

APPENDIX D: EA FOLLOW UP MONITORING REGISTRY

Condition / Tracking #	Description	Status	Date Completed (where applicable)
13.5.2	<p>C. Monitor flows as shown in Figure 13-2 commencing as soon as construction is completed on the West Creek pond and the West Creek diversion at:</p> <ul style="list-style-type: none"> • West Creek at the West Creek pond outflow; • West Creek diversion; and • Pinewood River at Highway 617 (Water Survey of Canada Station; WSC 05PC023). <p>Flows are already being measured for the Pinewood River at WSC Station 05PC023. Note that given the importance of the WSC station to overall site water management as per Section 4.12, RRR will need to enter into an agreement with WSC to ensure that the station will be maintained throughout the RRP mine life, and that data will be made available to RRR on a daily basis, and that RRR would be immediately informed of any maintenance activities which could influence its operations.</p>	<p>Construction of the West Creek diversion was not completed during 2015 and no flows were present to be monitored.</p> <p>The WSC remains active; however, NG installed a dedicated flow monitoring station on the Pinewood River during 2015 to supplement this data source.</p>	
13.5.2	<p>D. As data availability permits, develop annual updated statistical flow estimates for local watercourses based on flow data derived through monitoring, with such estimates to include:</p> <ul style="list-style-type: none"> • Monthly averages; • Annual averages; • Extreme low flow statistics corresponding to 2, 5, 10 and 20 year return period conditions; and • Extreme high flow statistics corresponding to 2, 5, 10 and 20 year return period conditions. 	<p>Instream measurements were ongoing during 2015. Updated statistical flow estimates were not derived during 2015.</p>	
13.5.2	<p>E. Carry out an environmental effects monitoring (EEM) program in accordance with the Metal Mining Guidance Document for Aquatic Environmental Effects Monitoring (EC 2012d) to assess the character and quality of aquatic resources at the following locations:</p> <ul style="list-style-type: none"> • West Creek diversion; and • Pinewood River upstream and downstream of the RRP site area. 	<p>EEM monitoring was not required during 2015 in accordance with monitoring cycle / Guidance Document and per F below.</p> <p>The West Creek Diversion was not as yet constructed during 2015.</p>	
13.5.2	<p>F. Except as provided for in Item E, above, carry out commencing one year after the date of commercial production and at three year intervals thereafter, fish habitat and fisheries assessments, including sediment and benthos investigations for:</p> <ul style="list-style-type: none"> • West Creek; • Clark Creek (upstream of the east mine rock stockpile); and • Pinewood River. <p>G. Monitor contaminants of potential concern in fish tissues from game fish harvested from the Pinewood River coincident with monitoring carried out pursuant to Item F, above.</p>	<p>Commercial production was not attained during 2015.</p>	
13.5.2	<p>H. As a component of the RRP stormwater management plan, collect and analyze late winter snow pack samples for pH and metals to help determine the effects of dustfall accumulated within the snow pack during spring melt.</p>	<p>Construction was not been initiated until after the snow pack had melted during 2015.</p>	

APPENDIX D: EA FOLLOW UP MONITORING REGISTRY

Condition / Tracking #	Description	Status	Date Completed (where applicable)
13.6.2	<p>RRR will carry out groundwater system monitoring as per the following:</p> <p>A. Collect and analyze samples, and measure pumping rates for minewater from the open pit and underground transferred to the mine rock pond (or to the TMA during construction);</p> <p>B. Establish a groundwater well (piezometer) network around the open pit area to monitor groundwater levels throughout the area on a continuous basis using water level transducers, with transducer downloads to be completed twice per year, commencing at least six months prior to the start of pumping, all as shown in Figure 13-3;</p> <p>C. Collect groundwater samples from the groundwater well / piezometer network quarterly except where prevented by freezing conditions, and analyze the samples for applicable parameters as provided for in Provincial approvals; and</p> <p>D. Review groundwater monitoring data annually and update the groundwater model on three year intervals, with the first such update to be based on data obtained from the first three full years of pumping; and with the model updates to be completed within nine months of the end of the data collection period.</p>	<p>No minewater was pumped during 2015 and sampling was not possible.</p> <p>Development of the groundwater well network was started in 2015. Sampling only occurred in the existing wells during 2015.</p>	
13.7.1	<p>A wildlife monitoring plan will be implemented to ensure that effects on wildlife are properly mitigated. FMP monitoring will be based where possible, on standard survey protocols used during baseline studies so that any changes in local mammal, area-sensitive breeding bird or amphibian populations may be detected.</p>	<p>A comprehensive Wildlife Monitoring Plan was issued in draft and consulted upon with the MNRF throughout 2015. It remained in draft at the end of 2015.</p>	
13.7.2	<p>Methods for determining adverse RRP-induced effects on mammals following the implementation of proposed mitigation measures will include:</p> <ul style="list-style-type: none"> • Bat acoustic monitoring at representative locations; • Aerial helicopter survey in late winter to document numbers and distributions of White-tailed Deer, Moose and Wolves at locations representing suitable habitat directly adjacent to the RRP site; and control sites. Such surveys to be conducted during the first winter of the construction phase, the winter following the completion of construction, and at three year intervals thereafter until the end of the active mine reclamation phase; • Working with any Aboriginal hunters to document White-tailed Deer, Moose, Wolf and Black Bear harvesting activities in the RRP site area; • Implementation of a wildlife log (including collisions) of general mammal observations made by employees on the RRP site including White-tailed Deer, Moose, Black Bear and any other larger furbearers; and • Monitoring of Black Bear activity related to waste disposal (if applicable) and general site activities. 	<p>Bat acoustic monitoring was completed during 2015.</p> <p>Monitoring of potential adverse effects on mammals did not occur during 2015. MNRF has requested that the study be aligned with their regional monitoring. The MNRF aerial surveys are to take place in January and/or February 2017 and will cover the District with transect lines spread out much wider than just the RRP.</p> <p>NG implemented a wildlife log at the site during 2015, and documented Black Bear activity related to site activities, including waste management.</p>	

APPENDIX D: EA FOLLOW UP MONITORING REGISTRY

Condition / Tracking #	Description	Status	Date Completed (where applicable)
13.7.3	<p>Methods for determining adverse effects to breeding birds following the implementation of proposed mitigation measures will include:</p> <ul style="list-style-type: none"> • Targeted point count surveys for diurnal SAR including Golden-winged Warbler, Barn Swallow and Bobolink and for woodland area-sensitive breeding birds in suitable habitat. Point counts will be based on standardized survey protocols described for the Ontario Breeding Bird Atlas Guide for Participants (OBBA 2001) so as to be consistent with baselines study methodology (Section 5.2.12); • Incidental data collection for SAR and Provincially rare species which are currently present at lower abundance including: Canada Warbler, Olive-sided Flycatcher, Short-eared Owl, American Pelican, Bald Eagle and Black-billed Magpie; • Targeted twilight surveys for Eastern Whip-poor-will in suitable habitat. Whip-poor-will monitoring efforts will follow standardized survey protocols as outlined in the whip-poor-will Roadside Survey Participant's Guide (BSC 2012); • Concurrent data collection for Common Nighthawk to be undertaken during targeted Eastern Whip-poor-will surveys as described above as no standardized survey protocols have been developed specifically for this species; • Annual monitoring of active Bald Eagle nests which occur in close proximity the RRP site. Monitoring will attempt to establish fledging success; • Implementation of a wildlife log of general breeding bird observations at the RRP site by employees (focused on raptors and raptor nests, and SAR species); and • Any additional monitoring defined in ESA permits. 	Monitoring of breeding birds during 2015 followed the requirements of the Provincial ESA Permit, and included these aspects.	
13.7.4	<p>Effects on amphibians after implementation of proposed mitigation measures will include:</p> <ul style="list-style-type: none"> • Implementation of a wildlife log of general amphibian observations by employees. 	A wildlife log was implemented during 2015 to track general amphibian observations.	
13.8.2	<p>This section considers the potential for traffic accidents on public roads related to the construction and operation of the RRP. Roads of specific interest are:</p> <ul style="list-style-type: none"> • Highways 71 and 11, west of Fort Frances and south of Kenora; • Highway 600; • Teeple Road west of Highway 71; and • East Access Road. <p>Methods for assessing traffic accidents along public roads will include:</p> <ul style="list-style-type: none"> • Monitoring road surface conditions for the identified roads of interest during the winter months and working with the MTO (MTO) and the local municipalities, to ensure that roads are properly cleared, salted and sanded, as appropriate to maintain safe driving conditions; • Maintaining a record of any accidents involving RRR employees and contractors related to the RRP; and • Maintaining a record of any near misses related to potential traffic accidents along the roads of interest involving RRR employees and contractors related to the RRP. 	<p>Records of any reported traffic accidents and near misses are maintained.</p> <p>Security conduct road inspections on site each night shift, with NG self-performed crew addressing identified issues/hazards. Teeple Road, East Access Road and Highway 600 are included in these inspections. Reports of road hazards are communicated during the HSE Communication broadcast over all radio channels at shift start.</p>	

APPENDIX D: EA FOLLOW UP MONITORING REGISTRY

Condition / Tracking #	Description	Status	Date Completed (where applicable)
13.9.2	<p>To assess potential changes to TLU that could potentially derive from implementation of the RRP, RRR will carry out, or provide financial support for, the following activities:</p> <ul style="list-style-type: none"> • Subject to any terms of agreement with the local First Nations and Métis, periodically update Traditional Knowledge (TK) studies conducted for the RRP beginning five years after mine operations initiate, to determine if there have been any changes to resource harvesting patterns by local Aboriginal peoples as a result of the RRP, and the reasons for any such changes; • Conduct reviews at five year intervals, of the activities of a subset of RRR Aboriginal employees (representative cross section) to determine the effects of employment on their traditional activities; and • Confirm any expected changes in the availability of fisheries and wildlife resources to local harvesters, based on data derived from biological monitoring programs. 	No updates etc. were conducted in 2015.	
13.10.2	<p>RRR will carry out the following monitoring program to ensure the protection of cultural heritage resources:</p> <ul style="list-style-type: none"> • Maintain a record of all cultural heritage resources known to occur in the vicinity of planned RRP developments, such that intrusion or damage to such resources can be avoided during construction, recognizing and respecting confidentiality limitations; • Maintain an active dialogue with local residents and Aboriginal group representatives, having knowledge of specific areas prior to and during major construction activities, to provide guidance to supervisory staff on the likely or possible occurrence of as yet undocumented cultural heritage sites; • Enlist the services of a trained archaeologist during the conduct of major construction works to support RRR as needed, where there is a reasonable potential for encountering as yet undocumented cultural heritage sites; • Enlist the services of Elders or other cultural advisors in the event that cultural heritage resources are encountered (in addition to meeting all Regulatory requirements); and • Conduct a post-construction assessment of the state of known cultural heritage sites in the vicinity of RRP activities / structures to confirm the integrity of such resources. 	<p>NG engaged qualified Archaeologists and Built Heritage Specialists to records all resources prior to construction commencing. NG continues to actively engage local residents and Aboriginal groups through meetings and visits and public events such as 2015 Archaeology Day hosted by NG. A NG employee is a qualified Archaeologist and has engaged Woodland Heritage Services to conduct ongoing investigations. NG agrees to enlist the services of Elders should Cultural Heritage resources be discovered. NG will agree to conduct post construction assessment of the state of known Cultural Heritage sites.</p>	
13.11.2	<p>RRR will carry out the following monitoring program to ensure the documentation of cultural heritage landscapes and built heritage resources as appropriate:</p> <ul style="list-style-type: none"> • Develop an initial record of all cultural heritage landscapes and built heritage resources known to occur near the planned RRP developments, such that intrusion or damage to such resources can be documented; and • Conduct a post-construction assessment of the state of known cultural heritage landscapes and built heritage resources in the vicinity of RRP activities / structures to confirm the status of such resources. 	<p>The initial record was completed by Unterman and McPhail. NG will complete a post-construction assessment of the state of known cultural heritage resources.</p>	

APPENDIX D: EA FOLLOW UP MONITORING REGISTRY

Condition / Tracking #	Description	Status	Date Completed (where applicable)
13.12.2	<p>Traffic flow on local roads with more limited capacity is of greater interest, notably:</p> <ul style="list-style-type: none"> • Highway 600; • Teeple Road west of Highway 71; and • The East Access Road. <p>The intent is to document that these local roads are able to continue to function adequately, and within safe limits for both project and local traffic. Methods for measuring traffic use along local roads will include:</p> <ul style="list-style-type: none"> • Periodic traffic count surveys using automated traffic counters; • Employee surveys to determine transport routes to and from the mine site; and • Ongoing discussions with MTO and the Township of Chapple to support additional traffic volume monitoring studies if appropriate. 	<p>If reports of excess traffic on local roads are received from residents or workers, these are addressed immediately.</p> <p>The use of buses to transport workers to/from site assists in reducing traffic loads.</p>	
13.13.2	<p>Methods for documenting accommodations use in association with the RRP will include conducting contractor and employee surveys to determine:</p> <ul style="list-style-type: none"> • Community or nearest community of local residence; • Type of residence (rental or ownership); • Type of accommodation (existing or new); • Type of occupancy (single, shared or family); and • Whether or not the employee / contractor is an existing local resident, or new to the area. 	<p>NG did not conducted any formal surveys in 2015. However, NG contracts with an Aboriginal provider for a construction accommodation facility. NG is a residential operation; NG employees do not fly-in/fly-out. NG tracks all NG employees to identify local hires, which gives a good representation on local impacts on the housing market.</p>	
13.14	<p>It is anticipated the environmental management system will consider the following areas as significant environmental aspects of the RRP (although they may not be represented by individual management plans depending on the final environmental management system framework):</p> <ul style="list-style-type: none"> • Recycling and waste reduction program; • Mine rock (PAG / NPAG) management; • Water management; • General waste management; • Hazardous materials management; • Fuel handling and storage; • Fugitive dust management; • Sound management; • Wildlife management; • Traffic management; • Cultural awareness; • Heritage management; • Emergency response; and • Response to malfunctions and accidents. 	<p>The EMS was in development and ongoing during 2015. Both NG Corporate and the RRP have some Environmental policies and procedures in place.</p>	
13.14	<p>Environmental management system maintenance and effectiveness will be monitored through a variety of programs, such as:</p> <ul style="list-style-type: none"> • Formal and informal audits; • Environmental monitoring; • Non-conformance incidents, status of corrective actions; and • Stakeholder feedback. <p>Periodic management reviews will completed to consider changing circumstances which could affect the continued suitability and adequacy of the plans, and to support continual improvement in overall effectiveness.</p>	<p>The EMS was in development and ongoing during 2015. Both NG Corporate and the RRP have some environmental policies and procedures in place. These aspects will be fully considered in the final system.</p>	

APPENDIX E
PUBLIC CONSULTATION TABLE

Public Consultation Table

Date	Consultation Type	Topics	Notes on Implementation	Public, Aboriginal, or Public and Aboriginal
04/02/2015	E-mail	New Gold, following up on their e-mail from 15-04-01, informed the Métis Nation of Ontario (MNO) that seven of the applications submitted to the Ministry of the Environment and Climate Change (MOECC) for the RRP are Permits to Take Water (PTTW). Further information and a link to the documents was provided and New Gold welcomed any comments or questions, noting their willingness to meet to discuss the applications.	No comments were received.	Aboriginal
04/02/2015	E-mail	New Gold, following up on their e-mail from 15-04-01, informed the Couchiching First Nation that seven of the applications submitted to the Ministry of the Environment and Climate Change (MOECC) for the RRP are Permits to Take Water (PTTW). Further information and a link to the documents was provided and New Gold welcomed any comments or questions, noting their willingness to meet to discuss the applications.	No comments were received.	Aboriginal
04/02/2015	E-mail	New Gold, following up on their e-mail from 15-04-01, informed the Seine River First Nation that seven of the applications submitted to the Ministry of the Environment and Climate Change (MOECC) for the RRP are Permits to Take Water (PTTW). Further information and a link to the documents was provided and New Gold welcomed any comments or questions, noting their willingness to meet to discuss the applications.	No comments were received.	Aboriginal
04/02/2015	E-mail	New Gold, following up on their e-mail from 15-04-01, informed the Anishinabe of Wauzhushk Onigum First Nation that seven of the applications submitted to the Ministry of the Environment and Climate Change (MOECC) for the RRP are Permits to Take Water (PTTW). Further information and a link to the documents was provided and New Gold welcomed any comments or questions, noting their willingness to meet to discuss the applications.	No comments were received.	Aboriginal
04/02/2015	E-mail	New Gold, following up on their e-mail from 15-04-01, informed the Mitaanjigamiing First Nation that seven of the applications submitted to the Ministry of the Environment and Climate Change (MOECC) for the RRP are Permits to Take Water (PTTW). Further information and a link to the documents was provided and New Gold welcomed any comments or questions, noting their willingness to meet to discuss the applications.	No comments were received.	Aboriginal
04/02/2015	E-mail	New Gold, following up on their e-mail from 15-04-01, informed the Nigigoonsiminikaaning First Nation that seven of the applications submitted to the Ministry of the Environment and Climate Change (MOECC) for the RRP are Permits to Take Water (PTTW). Further information and a link to the documents was provided and New Gold welcomed any comments or questions, noting their willingness to meet to discuss the applications.	No comments were received.	Aboriginal
04/02/2015	E-mail	New Gold, following up on their e-mail from 15-04-01, informed the Lac La Croix First Nation that seven of the applications submitted to the Ministry of the Environment and Climate Change (MOECC) for the RRP are Permits to Take Water (PTTW). Further information and a link to the documents was provided and New Gold welcomed any comments or questions, noting their willingness to meet to discuss the applications.	No comments were received.	Aboriginal
04/02/2015	E-mail	New Gold, following up on their e-mail from 15-04-01, informed the Northwest Angle No. 37 First Nation that seven of the applications submitted to the Ministry of the Environment and Climate Change (MOECC) for the RRP are Permits to Take Water (PTTW). Further information and a link to the documents was provided and New Gold welcomed any comments or questions, noting their willingness to meet to discuss the applications.	No comments were received.	Aboriginal

Public Consultation Table

Date	Consultation Type	Topics	Notes on Implementation	Public, Aboriginal, or Public and Aboriginal
04/02/2015	E-mail	New Gold, following up on their e-mail from 15-04-01, informed the Northwest Angle No.33 First Nation that seven of the applications submitted to the Ministry of the Environment and Climate Change (MOECC) for the RRP are Permits to Take Water (PTTW). Further information and a link to the documents was provided and New Gold welcomed any comments or questions, noting their willingness to meet to discuss the applications.	No comments were received.	Aboriginal
04/02/2015	E-mail	New Gold, following up on their e-mail from 15-04-01, informed the Ojibways of Onigaming First Nation that seven of the applications submitted to the Ministry of the Environment and Climate Change (MOECC) for the RRP are Permits to Take Water (PTTW). Further information and a link to the documents was provided and New Gold welcomed any comments or questions, noting their willingness to meet to discuss the applications.	No comments were received.	Aboriginal
04/02/2015	E-mail	New Gold, following up on their e-mail from 15-04-01, informed the Mishkosiimiiniizibing (Big Grassy River) First Nation that seven of the applications submitted to the Ministry of the Environment and Climate Change (MOECC) for the RRP are Permits to Take Water (PTTW). Further information and a link to the documents was provided and New Gold welcomed any comments or questions, noting their willingness to meet to discuss the applications.	No comments were received.	Aboriginal
04/02/2015	E-mail	New Gold, following up on their e-mail from 15-04-01, informed the Rainy River First Nations that seven of the applications submitted to the Ministry of the Environment and Climate Change (MOECC) for the RRP are Permits to Take Water (PTTW). Further information and a link to the documents was provided and New Gold welcomed any comments or questions, noting their willingness to meet to discuss the applications.	No comments were received.	Aboriginal
04/02/2015	E-mail	New Gold, following up on their e-mail from 15-04-01, informed the Anishinaabeg of Naongashiing First Nation that seven of the applications submitted to the Ministry of the Environment and Climate Change (MOECC) for the RRP are Permits to Take Water (PTTW). Further information and a link to the documents was provided and New Gold welcomed any comments or questions, noting their willingness to meet to discuss the applications.	No comments were received.	Aboriginal
04/02/2015	E-mail	New Gold, following up on their e-mail from 15-04-01, informed the Buffalo Point First Nation that seven of the applications submitted to the Ministry of the Environment and Climate Change (MOECC) for the RRP are Permits to Take Water (PTTW). Further information and a link to the documents was provided and New Gold welcomed any comments or questions, noting their willingness to meet to discuss the applications.	No comments were received.	Aboriginal
04/02/2015	E-mail	New Gold, following up on their e-mail from 15-04-01, informed the Naotkamegwaning First Nation that seven of the applications submitted to the Ministry of the Environment and Climate Change (MOECC) for the RRP are Permits to Take Water (PTTW). Further information and a link to the documents was provided and New Gold welcomed any comments or questions, noting their willingness to meet to discuss the applications.	No comments were received.	Aboriginal
04/02/2015	E-mail	New Gold, following up on their e-mail from 15-04-01, informed the Naicatchewenin First Nation that seven of the applications submitted to the Ministry of the Environment and Climate Change (MOECC) for the RRP are Permits to Take Water (PTTW). Further information and a link to the documents was provided and New Gold welcomed any comments or questions, noting their willingness to meet to discuss the applications.	On April 20, 2015, Naicatchewenin First Nation advised New Gold that they had no concerns in regards to the permits.	Aboriginal
04/06/2015	Site Visit	New Gold and Chapple Heritage Committee visited built heritage sites of the RRP. One house (Blackhawk Billy's house) was scheduled to be taken down. Due to the poor condition of the structure, the representatives expressed no interest in preserving the structure.	No further action required.	Public

Public Consultation Table

Date	Consultation Type	Topics	Notes on Implementation	Public, Aboriginal, or Public and Aboriginal
04/08/2015	Community Event	New Gold participated in the Rainy River First Nations career fair. Approximately six New Gold team members were present.	No further action required.	Aboriginal
04/08/2015	Meeting	New Gold held a meeting with the Fort Frances Chiefs Secretariat in Fort Frances, ON.	No further action required.	Aboriginal
04/09/2015	Community Event	New Gold participated in a career fair for Mishkosiimiiniizibing (Big Grassy River) First Nation. Approximately six New Gold team members were present.	No further action required.	Aboriginal
04/09/2015	Meeting	New Gold met with Buffalo Point First Nation to provide an update on the RRP in response to a request from one of the First Nation's Council members.	Council member that sent email was not present. Update provided to a different council member.	Aboriginal
04/10/2015	Letter	New Gold mailed out the RRP Spring 2015 Newsletter to the following communities: Rainy River, Fort Frances (includes Couchiching, Nigigoonsiminikaaning, Mitaanjigamiing, Lac La Croix, Sunset Country Métis), Devlin (includes Naicatchewenin), Emo (includes Rainy River First Nations), Barwick, Stratton, Pinewood, Sleeman (includes Big Grassy, Big Island), Nestor Falls (includes Onigaming), Mine Centre (includes Seine River), and Pawitik (includes Whitefish Bay and Sioux Narrows). A digital version was also posted on the New Gold website.	No further action required.	Public and Aboriginal
04/10/2015	Meeting	New Gold met with six members of the Mitaanjigamiing First Nation to provide an update to the community on the EA and Closure Plan for the RRP.	No further action required.	Aboriginal
04/14/2015	Community Event	New Gold participated in the Naicatchewenin First Nation career fair. Approximately six New Gold team members were present.	No further action required.	Aboriginal
04/16/2015	Community Event	New Gold participated in the community career fair in Barwick, ON. Approximately six New Gold team members participated.	No further action required.	Public
04/16/2015	Meeting	New Gold held a monthly meeting with Rainy River First Nations and Naicatchewenin First Nation in Emo, ON.	Ongoing monthly meetings are held.	Aboriginal
04/19/2015	Community Meeting	New Gold met with the Seine River First Nation community to provide an update on the RRP. (1) The Seine River First Nation Chief identified a concern that their community is not directly benefiting from the RRP. The Chief understands that community members face barriers (such as distance and drug testing) but believes there are qualified and capable community members. (2) Seine River First Nation is working with three other communities through their development corporation, Boundary Waters, with the intent to begin to participate directly at the RRP site through contracts. (3) The Seine River First Nation Chief requested New Gold's assistance in providing support and/or resources for some of their environmental projects. The First Nation is working with Lakehead University to monitor sturgeon spawning habit. The First Nation is also working to replenish wild rice in their traditional areas.	(1) New Gold has a Participation Agreement with Seine River First Nation and agreed to host a career fair as invited by the community. (2) New Gold's Business Development Officer has been working with Seine River First Nation on business development. (3) Seine River First Nation will participate in Environmental Sub-committee as part of the Fort Frances Chief Secretariat to understand environmental projects and commitments.	Aboriginal
04/21/2015	Information Kiosk	New Gold set up a booth at the Sturgeon Creek Alternative Program Science Fair on 15-04-21.	No further action required.	Public
04/21/2015	E-mail	New Gold received an e-mail from Ojibways of Onigaming First Nation noting they would not be able to attend a previously scheduled meeting in Toronto.	New Gold suggested an alternate meeting date in Winnipeg.	Aboriginal
04/21/2015	E-mail	New Gold invited the Métis Nation of Ontario to the Spring Ceremony at the RRP planned for 15-05-08.	No further action required.	Aboriginal

Public Consultation Table

Date	Consultation Type	Topics	Notes on Implementation	Public, Aboriginal, or Public and Aboriginal
04/21/2015	E-mail	New Gold invited Pwi-Di-Goo-Zing Ne-Yaa-Zhing Advisory Services to the Spring Ceremony at the RRP planned for 15-05-08.	No further action required.	Aboriginal
04/21/2015	E-mail	New Gold invited the Seine River First Nation to the Spring Ceremony at the RRP planned for 15-05-08.	No further action required.	Aboriginal
04/21/2015	E-mail	New Gold invited Couchiching First Nation to the Spring Ceremony at the RRP planned for 15-05-08.	No further action required.	Aboriginal
04/21/2015	E-mail	New Gold invited Mitaanjigamiing First Nation to the Spring Ceremony at the RRP planned for 15-05-08.	No further action required.	Aboriginal
04/21/2015	E-mail	New Gold invited Nigigoonsiminikaaning First Nation to the Spring Ceremony at the RRP planned for 15-05-08.	No further action required.	Aboriginal
04/21/2015	E-mail	New Gold invited Rainy River First Nations to the Spring Ceremony at the RRP planned for 15-05-08.	No further action required.	Aboriginal
04/21/2015	E-mail	New Gold invited Lac La Croix First Nation to the Spring Ceremony at the RRP planned for 15-05-08.	No further action required.	Aboriginal
04/21/2015	E-mail	New Gold invited Naicatchewenin First Nation to the Spring Ceremony at the RRP planned for 15-05-08.	No further action required.	Aboriginal
04/21/2015	E-mail	New Gold invited Mishkosiimiiniizibing (Big Grassy River) First Nation to the Spring Ceremony at the RRP planned for 15-05-08.	No further action required.	Aboriginal
04/21/2015	E-mail	New Gold invited Naotkamegwanning (Whitefish Bay) First Nation to the Spring Ceremony at the RRP planned for 15-05-08.	No further action required.	Aboriginal
04/21/2015	E-mail	New Gold invited Ojibways of Onigaming First Nation to the Spring Ceremony at the RRP planned for 15-05-08.	No further action required.	Aboriginal
04/21/2015	E-mail	New Gold invited Anishinaabeg of Naongashiing (Big Island) First Nation to the Spring Ceremony at the RRP planned for 15-05-08.	No further action required.	Aboriginal
04/21/2015	E-mail	New Gold invited Northwest Angle No.33 First Nation to the Spring Ceremony at the RRP planned for 15-05-08.	No further action required.	Aboriginal
04/21/2015	E-mail	New Gold invited Buffalo Point First Nation to the Spring Ceremony at the RRP planned for 15-05-08.	No further action required.	Aboriginal
04/21/2015	E-mail	New Gold invited the Northwest Angle 37 First Nation to the Spring Ceremony at the RRP planned for 15-05-08.	No further action required.	Aboriginal
04/21/2015	Meeting	New Gold met with Nigigoonsiminikaaning First Nation.	No further action required.	Aboriginal
04/21/2015	Meeting	A bait fish harvester requested a meeting with New Gold to discuss harvesting activities in the Rainy River Project area. The harvester agreed to work with New Gold on providing information on harvesting activities.	Bait fish harvester is to contact New Gold as he also has other harvest areas.	Aboriginal
04/22/2015	E-mail	New Gold provided responses to questions made on the RRP by a member of the public on 15-04-22.	No further action required.	Public
04/22/2015	Community Event	New Gold participated in a career fair for the United Native Friendship Centre. Approximately six New Gold team members were present.	No further action required.	Public and Aboriginal
04/22/2015	Meeting	New Gold and Chapple Heritage Committee met to discuss the settlement history project.	New Gold and Chapple Heritage Committee agreed on approach. History was completed by Dan Morrisseau in 2015.	Public

Public Consultation Table

Date	Consultation Type	Topics	Notes on Implementation	Public, Aboriginal, or Public and Aboriginal
04/23/2015	Community Event	New Gold participated in a career fair for the community of Emo, ON. Approximately six New Gold team members were present.	No further action required.	Public
04/28/2015	Presentation	New Gold gave a presentation to the Fort Frances Chamber of Commerce on the RRP at La Place Rendezvous in Fort Frances, Ontario. There were 22 attendees.	No further action required.	Public
04/28/2015	Meeting	New Gold met with Couchiching First Nation to provide an update on the status of the permit applications for the RRP.	No further action required.	Aboriginal
04/29/2015	Meeting	New Gold provided the Township of Chapple with an update on the RRP.	No further action required.	Public
05/01/2015	E-mail	New Gold provided a listing of a current employment opportunity available at the RRP.	No further action required.	Aboriginal
05/04/2015	Community Event	New Gold participated in the Ojibways of Onigaming First Nation career fair. Approximately six New Gold team members participated	No further action required.	Aboriginal
05/05/2015	Community Event	New Gold participated in a career fair for Seine River First Nation. Approximately six New Gold team members were present.	No further action required.	Aboriginal
05/06/2015	Presentation	New Gold attended and presented at the Women in Mining Conference held in Fort Frances, ON.	No further action required.	Public
05/06/2015	Meeting	New Gold met with Couchiching First Nation to provide an update on the RRP employment opportunities. Couchiching First Nation had requested the meeting so that they could consider training initiatives for their members.	No further action required.	Aboriginal
05/07/2015	Meeting	New Gold attended a meeting with the Nigigoonsiminikaaning First Nation.	No further action required.	Aboriginal
05/07/2015	Community Event	New Gold participated in a career fair for Mitaanjigamiing (Stanjikoming) First Nation. Approximately six New Gold team members were present.	No further action required.	Aboriginal
05/07/2015	Meeting	New Gold held a meeting with the Métis Nation of Ontario in Emo, ON.	Next meeting was scheduled for August 4, 2015.	Aboriginal
05/08/2015	Ceremony	New Gold held a Spring Ceremony at 409 Gallinger Road. All communities were invited. Approximately 50 people attended the event.	No further action required.	Aboriginal
05/13/2015	E-mail	New Gold provided a response to a comment from an individual from Buffalo Point First Nation on the RRP, following information presented to the community at a meeting on 15-04-09.	No further action required.	Aboriginal
05/13/2015	E-mail	New Gold provided additional information to responses to questions about the RRP previously received by an individual and responded to by New Gold on 15-04-22.	Stakeholder requested that she be contacted in the future by telephone; New Gold should no longer email her son.	Public
05/14/2015	Community Event	New Gold participated in a career fair for Anishinaabeg of Naongashiing (Big Island) First Nation. Approximately six New Gold team members participated.	No further action required.	Aboriginal
05/15/2015	Ceremony	New Gold held a sod turning ceremony at the Project Site and Barwick Hall. Approximately 60 people attended the event.	No further action required.	Public and Aboriginal
05/19/2015	Meeting	New Gold met with Northwest Angle No. 37 First Nation.	Next meeting scheduled for June 7, 2015.	Aboriginal
05/21/2015	Community Event	New Gold participated in a career fair for Couchiching First Nation. Approximately six New Gold team members were present.	No further action required.	Aboriginal

Public Consultation Table

Date	Consultation Type	Topics	Notes on Implementation	Public, Aboriginal, or Public and Aboriginal
05/21/2015	Meeting	New Gold held a monthly meeting with Rainy River First Nations and Naicatchewenin First Nation in Emo, ON.	Next meeting was scheduled for May 21, 2015.	Aboriginal
05/23/2015	Information Kiosk	New Gold participated in the two-day Fort Frances Business Expo at the Memorial Sport Centre. New Gold had an information booth and team members from various departments participated.	No further action required.	Public
05/25/2015	Site Visit	New Gold provided the Chief of the Anishinaabeg of Naongashiing (Big Island) First Nation a tour of construction activities at the RRP.	No further action required.	Aboriginal
05/25/2015	Meeting	New Gold met with a local bait fish harvester to discuss harvesting activities in the RRP area. The individual agreed to work with New Gold to identify locations and quantities of bait fish harvests in the RRP area.	Bait fish harvester is to provide information to New Gold.	Aboriginal
05/26/2015	Community Event	New Gold participated in a career fair for the Métis Nation of Ontario. Approximately six New Gold team members were present.	No further action required.	Aboriginal
05/27/2015	Meeting	New Gold met with Ojibways of Onigaming First Nation.	Next meeting scheduled for June 24, 2015.	Aboriginal
05/28/2015	Meeting	New Gold met with Naotkamegwanning (Whitefish Bay) First Nation.	Next meeting scheduled for July 31, 2015.	Aboriginal
05/29/2015	Site Visit	New Gold hosted seven grade 7/8 students and three teachers from the Pineview Mennonite Christian Day School (Barwick). They visited the geology office and a tour of the Barron site was provided by New Gold geologists.	No further action required.	Public
06/02/2015	Site Visit	New Gold hosted 28 grade 4/5 students and three teachers from the Donald Young School (Emo). They visited the geology office and a tour of the Barron site was provided by New Gold geologists.	No further action required.	Public
06/02/2015	E-mail	New Gold provided the results from the Surface Water Monitoring Program at the RRP as per the Joint Water Quality Monitoring Program (JWQMP), for 15-04-22.	No further action required.	Aboriginal
06/02/2015	Community Event	New Gold participated in the Nigoonsiminikaaning First Nation career fair. Approximately six New Gold team members were present.	No further action required.	Aboriginal
06/03/2015	Meeting	New Gold held a meeting with RRP neighbours to provide a general Project update, including blasting notifications and archaeology. The neighbours were informed that they will not receive specific notice of regular blasting (that will occur between 8 am and 5 pm, Monday through Friday) but will receive specific notice of any blasting outside of these times and days. Neighbours were requested to identify their preferred method of notification (such as email, phone or text).	New Gold agreed to hold meetings in the future with no commitment to specific dates.	Public
06/06/2015	Community Event	New Gold set up an information booth at Thunder Bay Mining Day.	No further action required.	Public
06/08/2015	Presentation	New Gold gave a presentation on the RRP to the Ministry of Natural Resources Advisory Committee.	No further action required.	Public
06/10/2015	Community Event	New Gold participated in the Kenora Métis Council career fair. Approximately six New Gold team members were present.	No further action required.	Aboriginal
06/10/2015	Mass Mailout	New Gold mailed the RRP Summer 2015 Newsletter to: Rainy River, Fort Frances (includes Couchiching, Nigoonsiminikaaning, Mitaanjigamiing, Lac La Croix, Sunset Country Métis), Devlin (includes Naicatchewenin), Emo (includes Rainy River First Nations), Barwick, Stratton, Pinewood, Sleeman (includes Big Grassy, Big Island), Nestor Falls (includes Onigaming), Mine Centre (includes Seine River), Pawitik (includes Whitefish Bay).	No further action required.	Public and Aboriginal

Public Consultation Table

Date	Consultation Type	Topics	Notes on Implementation	Public, Aboriginal, or Public and Aboriginal
06/11/2015	Community Meeting	New Gold participated in a community meeting with Seine River First Nation. New Gold provided information to attendees on the RRP and related employment opportunities. Presentation materials included posters, maps and an animation/video. Discussions were primarily about employment opportunities; one Elder expressed concern in the Great Earth Law being honored throughout the life of the mine.	New Gold discussed Great Earth Law with the Elder. No further action required.	Aboriginal
06/15/2015	Meeting	New Gold met with the Township of Chapple's Heritage Committee to discuss the settlement history. The settlement history compilation project is being funded by New Gold.	The settlement history project was completed in 2015.	Public
06/18/2015	Community Event	New Gold participated in the Crossroads School Science Fair BBQ for children in Kindergarten through Grade 8. New Gold had a table with posters and information.	No further action required.	Public
06/18/2015	Meeting	New Gold held a monthly meeting with Rainy River First Nations and Naicatchewenin First Nation in Emo, ON.	Next meeting scheduled for July 16, 2015.	Aboriginal
06/22/2015	Meeting	New Gold met with the Township of Morley's Land Division Committee regarding the two severance applications that are required for the RRP to advance construction of re-routed Highway 600.	No further action required. Severances were agreed to by the township.	Public
06/24/2015	Meeting	New Gold met with representatives from the Township of Morley to provide an update on the RRP and to discuss the realignment of Highway 600 and the proposed waterline. A number of Council Members were also present.	No further action required.	Public
06/24/2015	Meeting	New Gold met with Ojibways of Onigaming First Nation.	Next meeting scheduled for August 10, 2015.	Aboriginal
06/29/2015	Site Visit	New Gold hosted Elders from Anishinaabeg of Naongashiing (Big Island) First Nation, Mitaanjigamiing First Nation, Naicatchewenin First Nation, and Rainy River First Nations for a tour of the RRP site and demonstrations of the ongoing fish relocation program. An archaeologist working at the site also shared information about site identification and excavation. Elders shared information about the spiritual significance of the archaeological artifacts. A question and answer session was held during lunch at Kay-Nah-Chi-Wah-Nung Historical Centre.	No further action required.	Aboriginal
06/29/2015	Meeting	New Gold provided a site tour of three properties to an individual from Winnipeg that was interested in their family settlement history. The three properties visited are located within the Project footprint where the individual's family settled in the early 1900's.	No further action required.	Public
06/30/2015	Site Visit	New Gold hosted Elders from Mishkosiimiiniiziibing (Big Grassy River) First Nation for a tour of the RRP site and demonstrations of the ongoing fish relocation program. An archaeologist working at the site also shared information about site identification and excavation. Elders shared information about the spiritual significance of the archaeological artifacts. A question and answer session was held during lunch at Kay-Nah-Chi-Wah-Nung Historical Centre.	No further action required.	Aboriginal
06/30/2015	Community Event	New Gold participated in Mall Days in Fort Frances. New Gold had a tent with posters and information as well as balloons for the children. The event was well attended and some questions were asked about employment.	No further action required.	Public
07/04/2015	Community Event	New Gold participated in a career fair for Naotkamegwanning (Whitefish Bay) First Nation. Approximately six New Gold team members were present.	No further action required.	Aboriginal
07/08/2015	Meeting	New Gold held a meeting with the Fort Frances Chiefs Secretariat in Fort Frances, ON.	Next meeting was scheduled for September 9, 2015.	Aboriginal
07/09/2015	Meeting	New Gold held a meeting with Mishkosiimiiniiziibing (Big Grassy River) First Nation in Big Grassy, ON.	Next meeting was scheduled for September 10, 2015.	Aboriginal

Public Consultation Table

Date	Consultation Type	Topics	Notes on Implementation	Public, Aboriginal, or Public and Aboriginal
07/14/2015	Meeting	New Gold met with the Township of Chapple to provide an update on the RRP.	No further action required.	Public
07/14/2015	Meeting	New Gold, Rainy River First Nations and Naicatchewenin First Nation held a two-day leadership team planning meeting in Tower, MN. The intent of the meeting was to further the relationship and tell the story of the relationship between the First Nations and New Gold.	No further action required.	Aboriginal
07/16/2015	Meeting	New Gold met with a local bait fish harvester to discuss the individual's current and future access to the RRP area.	New Gold and the bait fish harvester agreed to meet again in the future.	Aboriginal
07/16/2015	Meeting	New Gold held a monthly meeting with Rainy River First Nations and Naicatchewenin First Nation in Emo, ON.	Next meeting was scheduled for September 17, 2015.	Aboriginal
07/22/2015	Meeting	New Gold met with Nigigoonsiminikaaning First Nation.	No further action required.	Aboriginal
07/24/2015	Presentation	New Gold participated in the Archaeology Day held at the Kay-Nah-Chi-Wah-Nung Historical Centre. Woodland Heritage Archaeology was present to explain their work and showcase artifacts found at the RRP site. The event was open to the public and well attended.	No further action required.	Public
07/31/2015	Meeting	New Gold met with Naotkamegwanning (Whitefish Bay) First Nation for a Meeting.	Next meeting was scheduled for August 20 and August 21, 2015.	Aboriginal
08/04/2015	Meeting	New Gold held a meeting with the Métis Nation of Ontario in Emo, ON.	Next meeting was scheduled for October 6, 2015.	Aboriginal
08/07/2015	Meeting	New Gold met with the individual that is undertaking the settlement history project to discuss the project.	Settlement history was completed in 2015.	Public
08/10/2015	Meeting	New Gold met with the Ojibways of Onigaming First Nation.	Next meeting was scheduled for September 8, 2015.	Aboriginal
08/14/2015	Meeting	New Gold, Rainy River First Nations and Naicatchewenin First Nation travelled to New Gold's Afton Mine in Kamloops, BC. The intent of the three-day trip was to allow the First Nations the opportunity to see an operating mine and to meet with local BC First Nations working with the New	No further action required.	Aboriginal
08/20/2015	Meeting	New Gold met with Naotkamegwanning (Whitefish Bay) First Nation.	Next meeting was scheduled for September 28, 2015.	Aboriginal
08/20/2015	Community Event	New Gold participated in the Emo Open Streets event, which is geared toward active lifestyles. Emo-area businesses were invited to participate outside along Front Street. This event was open to the public.	No further action required.	Public
08/21/2015	Meeting	New Gold met with Naotkamegwanning (Whitefish Bay) First Nation.	Next meeting was scheduled for September 28, 2015.	Aboriginal
08/28/2015	E-mail	New Gold provided an update on the RRP to various Aboriginal communities, including major construction activities and career fairs. The update also provided advance notice of the mid-September first blast for mine development and invited community representatives to the project site to carry out cultural practices as appropriate. The email also provided advance notice of the annual Fall Ceremony (scheduled for October 6) and identified that invitations will be sent out in the near future.	No further action required.	Aboriginal
09/01/2015	Site Visit	New Gold met with the Ministry of Training Colleges and Universities and provided a driving site tour with a stop at the RRP assembly pad.	No further action required.	Public
09/02/2015	Site Visit	New Gold provided an opportunity for neighbours of the RRP to visit the assembly pad and view the mining equipment. A total of 17 neighbours attended the visit.	No further action required.	Public

Public Consultation Table

Date	Consultation Type	Topics	Notes on Implementation	Public, Aboriginal, or Public and Aboriginal
09/08/2015	Meeting	New Gold met with Ojibways of Onigaming First Nation.	Next meeting was scheduled for January 12, 2016.	Aboriginal
09/08/2015	Ceremony	New Gold held a ceremony at the RRP for the first production blast in the pit area. Local Elders officiated the ceremony. RRP team members in attendance included: Operations Managers, Surface Miner Aboriginal Trainees, and Community Team.	No further action required.	Aboriginal
09/09/2015	Meeting	New Gold held a meeting with the Fort Frances Chiefs Secretariat in Emo, ON.	Next meeting was scheduled for December 9, 2015.	Aboriginal
09/10/2015	E-mail	New Gold provided various First Nations and Métis communities with a listing of current job opportunities available at the RRP. New Gold provided this information on a weekly basis between May 1, 2015 and September 10, 2015.	No further action required.	Aboriginal
09/10/2015	Meeting	New Gold held a meeting with Mishkosiimiiniiziibing (Big Grassy River) First Nation in Big Grassy, ON.	Next meeting was scheduled for December 10, 2015.	Aboriginal
09/16/2015	Site Visit	New Gold provided an opportunity for First Nations from British Columbia who are engaged by New Gold's Blackwater Project to visit a mine construction site and learn about business opportunities and economic development from Rainy River Project First Nations.	No further action required.	Aboriginal
09/17/2015	Meeting	New Gold held a monthly meeting with Rainy River First Nations and Naicatchewenin First Nation in Emo, ON.	Next meeting was scheduled for October 15, 2015.	Aboriginal
09/24/2015	Community Event	Rainy River First Nations, Naicatchewenin First Nation and New Gold brought their communities together to build an understanding of the communities and the Rainy River Project. There were approximately 14 participants from the First Nation communities.	No further action required.	Aboriginal
09/25/2015	E-mail	New Gold invited various First Nations and Métis to the annual Fall Ceremony to be held on 15-10-06. New Gold provided an event poster for distribution.	No further action required.	Aboriginal
09/25/2015	Meeting	At the invite of the Elders, New Gold went to a Rainy River First Nations Elders meeting, attended by approximately eight Elders. New Gold answered questions on the RRP which were mostly focused on employment opportunities for community members.	No further action required.	Aboriginal
09/26/2015	Site Visit	New Gold provided a driving site tour to approximately 30 seniors from the surrounding area. For many participants this was their first opportunity to see the site and learn about the ongoing work at the RRP.	No further action required.	Public
09/28/2015	Meeting	New Gold provided the Township of Chapple with an update on the RRP.	No further action required.	Public
09/28/2015	Meeting	New Gold met with Naotkamegwanning (Whitefish Bay) First Nation.	Next meeting was scheduled for December 1, 2015.	Aboriginal
09/30/2015	Meeting	New Gold provided an update on the RRP to the Township of Chapple.	No further action required.	Public
09/30/2015	Presentation	New Gold gave a presentation for the Rainy River District Municipal Association (RRDMA).	No further action required.	Public and Aboriginal
10/01/2015	Community Event	New Gold participated in a Mining Matters event entitled Mining Rocks. The event took place over three days during which New Gold participated in class groups, teacher workshops and evening community events. The schools involved included Baibombeh School at Naotkamegwanning First Nation, Sturgeon Creek School and Fort Frances High School.	No further action required.	Public and Aboriginal
10/01/2015	Site Visit	New Gold provided an opportunity for neighbours of the RRP to visit the assembly pad and view the mining equipment.	No further action required.	Public

Public Consultation Table

Date	Consultation Type	Topics	Notes on Implementation	Public, Aboriginal, or Public and Aboriginal
10/06/2015	Ceremony	New Gold held a fall ceremony at Gallinger Road. Lunch was provided and the ceremony was officiated by an Elder. All communities were invited to attend.	No further action required.	Aboriginal
10/06/2015	Meeting	New Gold held a meeting with the Métis Nation of Ontario in Marr Site, ON.	Next meeting was scheduled for January 5, 2016.	Aboriginal
10/09/2015	Mass Mailout	New Gold mailed out a hunting flyer to: Rainy River, Fort Frances (includes Couchiching, Nigigoonsiminikaaning, Mitaanjigamiing, Lac La Croix, Sunset Country Métis), Devlin (includes Naicatchewenin), Emo (includes Rainy River First Nations), Barwick, Stratton, Pinewood, Sleeman (includes Big Grassy, Big Island), Nestor Falls (includes Onigaming), Mine Centre (includes Seine River), Pawitik (includes Whitefish Bay).	No further action required.	Public and Aboriginal
10/14/2015	Newspaper Advertisement	New Gold placed a newspaper advertisement regarding hunting in the Fort Frances Times and West End Weekly. The purpose of the advertisement was to inform readers that there will be workers in the area and use extreme caution when travelling and enjoying recreational activities in this vicinity	No further action required.	Public
10/15/2015	Meeting	New Gold held a monthly meeting with Rainy River First Nations and Naicatchewenin First Nation in Emo, ON.	Next meeting was scheduled for November 19, 2015.	Aboriginal
10/16/2015	Meeting	New Gold met with 11 neighbours along Highway 600 between Dearlock and North Branch to provide information on increased vehicle traffic due to hauling from the gravel pit located at North Branch.	No further action required.	Public
10/19/2015	Site Visit	New Gold provided Township of Chapple staff and council with a site tour to view the ongoing construction activities.	No further action required.	Public
10/21/2015	Newspaper Advertisement	New Gold placed an advertisement in the Fort Frances Times and West End Weekly notifying aircraft operators of RRP activities including blasting currently taking place at a number of locations and will be on-going through 2016. Aircraft operators were advised to check NOTAM and NAV CANADA for information on planned flight paths to identify any potential dangers.	No further action required.	Public
10/27/2015	Site Visit	New Gold provided Northern Community Development Services (NCDS) with a site tour to view the ongoing construction activities.	No further action required.	Public
10/27/2015	Community Event	New Gold provided participants of the Ontario Works Program for Mishkosiimiiniizibing (Big Grassy River) First Nation an opportunity to try the heavy equipment simulator and information about RRP employment and training opportunities.	No further action required.	Aboriginal
10/28/2015	Community Event	New Gold provided participants of the Ontario Works Program for Mishkosiimiiniizibing (Big Grassy River) First Nation an opportunity to try the heavy equipment simulator as well as providing information about employment and training opportunities.	No further action required.	Aboriginal
10/29/2015	Mass Mailout	New Gold mailed the RRP Fall 2015 Newsletter to: Rainy River, Fort Frances (includes Couchiching, Nigigoonsiminikaaning, Mitaanjigamiing, Lac La Croix, Sunset Country Métis), Devlin (includes Naicatchewenin), Emo (includes Rainy River First Nations), Barwick, Stratton, Pinewood, Sleeman (includes Big Grassy, Big Island), Nestor Falls (includes Onigaming), Mine Centre (includes Seine River), Pawitik (includes Whitefish Bay).	No further action required.	Public and Aboriginal
10/30/2015	Open House	New Gold participated in an open house/information session for Northwest Angle No. 37 First Nation held at the Lakeside Inn in Kenora, ON. New Gold showed the video and had posters and career information on hand.	No further action required.	Aboriginal

Public Consultation Table

Date	Consultation Type	Topics	Notes on Implementation	Public, Aboriginal, or Public and Aboriginal
10/30/2015	Site Visit	New Gold provided Naicatchewenin First Nation a driving tour of the RRP site including assembly pad, plant site and pit area.	No further action required.	Aboriginal
11/03/2015	E-mail	New Gold emailed out the RRP Fall 2015 Newsletter to 15 First Nation Chiefs and invited them to a presentation on the Project on 2015-11-04 at the Emo Legion to be given by the General Manager of the RRP.	No further action required.	Aboriginal
11/03/2015	E-mail	New Gold emailed the RRP Fall 2015 Newsletter and invited a representative of the Métis Nation of Ontario to hear a presentation on the RRP on 2015-11-04 in Emo.	No further action required.	Aboriginal
11/04/2015	Community Meeting	New Gold held a community information session in Emo. During the session, New Gold presented an update on the RRP. Approximately 28-30 individuals attended the session.	No further action required.	Public
11/12/2015	Community Meeting	New Gold participated in a community information session for Northwest Angle No. 37 First Nation. New Gold provided information on employment opportunities and the status of the RRP. New Gold also made available a presentation and video. The event was open to the community and there were three attendees.	No further action required.	Aboriginal
11/19/2015	Presentation	New Gold gave a presentation at the Thunder Bay Women in Mining Night. The presentation provided an update on the RRP and an overview of New Gold.	No further action required.	Public
11/19/2015	Meeting	New Gold held a monthly meeting with Rainy River First Nations and Naicatchewenin First Nation in Emo, ON.	Next meeting to be held on December 1, 2015.	Aboriginal
11/24/2015	Presentation	New Gold gave a presentation to the Fort Frances Chamber of Commerce at La Place Rendezvous in Fort Frances. The presentation provided an update on the RRP and an overview of	No further action required.	Public
11/30/2015	Community Event	New Gold participated in a career fair organized by Rainy River First Nations and Naicatchewenin First Nation. New Gold provided information about employment opportunities and assistance with the simulator. There were approximately 70 students in attendance from the communities.	No further action required.	Aboriginal
12/01/2015	Meeting	New Gold met with the Chief of Nigigoonsiminikaaning First Nation to follow-up on previous meetings. The Chief requested assistance with a life skills course and driver training program. The meeting was held in Fort Frances.	No further action required.	Aboriginal
12/01/2015	Meeting	New Gold held a conference call meeting with Naotkamegwaning First Nation.	Next meeting was scheduled for December 16, 2015.	Aboriginal
12/01/2015	Meeting	New Gold held a meeting with Rainy River First Nations and Naicatchewenin First Nation at Fortune Bay as a retreat over December 1 and 2, 2015.	Next meeting to be held in 2016.	Aboriginal
12/02/2015	Workshop	New Gold conducted a Pre-Employment Workshop for Naicatchewenin First Nation at the Naicatchewenin Community Hall, which covered resumes, cover letters, communication and social media. New Gold provide laptops to assist in generating profiles for electronic recruitment, updating resumes and cover letters, and to conduct employment readiness assessments.	No further action required.	Aboriginal
12/03/2015	Workshop	New Gold conducted a Pre-Employment Workshop for Mitaanjigamiing First Nation at NAME school, which covered resumes, cover letters, communication and social media. New Gold provide laptops to assist in generating profiles for electronic recruitment, updating resumes and cover letters, and to conduct employment readiness assessments.	No further action required.	Aboriginal

Public Consultation Table

Date	Consultation Type	Topics	Notes on Implementation	Public, Aboriginal, or Public and Aboriginal
12/07/2015	Community Meeting	<p>New Gold held a Luncheon for the Naicatchewenin First Nation Elders at the Round House. There were 25 people in attendance and the luncheon included a question and answer period resulting in:</p> <p>(1) New Gold will work with the community to identify areas and monitor wildlife as per the Wildlife Monitoring Plan</p> <p>(2) New Gold to follow up with a Naicatchewenin First Nation' s Community Representative in 2016 regarding the Environmental Monitoring Board.</p> <p>(3) It was identified that two representatives will sit on the Environmental Monitoring Board.</p> <p>(4) New Gold will work with the Environmental Monitoring Board to understand environmental monitoring at the site.</p> <p>(5) New Gold and Elders agreed to meet more frequently.</p>	<p>Follow up action required: Environmental Monitoring Board to be established in 2016.</p>	Aboriginal
12/08/2015	Workshop	<p>New Gold conducted a Pre-Employment Workshop for Big Grassy First Nation at Pegamigaabo school, which covered resumes, cover letters, communication and social media. New Gold provide laptops to assist in generating profiles for electronic recruitment, updating resumes and cover letters, and to conduct employment readiness assessments.</p>	No further action required.	Aboriginal
12/09/2015	Meeting	<p>New Gold held a meeting with the Fort Frances Chiefs Secretariat.</p>	Next meeting was scheduled in 2016.	Aboriginal
12/09/2015	Meeting	<p>New Gold met with the Chief and other representatives from Nigigoonsiminikaaning First Nation to discuss training and education programs that would increase their members employability. A life skills course and drivers training program are planned for January 2016. The meeting was held at the Nigigoonsiminikaaning Chief & Council office.</p>	<p>A life skills course and drivers training program are planned for January 2016.</p>	Aboriginal
12/10/2015	Meeting	<p>New Gold held a meeting with Mishkosiimiiniizibing (Big Grassy River) First Nation at New Gold's office in Emo, ON.</p>	Next meeting was scheduled in 2016.	Aboriginal
12/10/2015	Meeting	<p>New Gold met with an Elder from Naicatchewenin First Nation; the Elder identified no questions or concerns about the RRP.</p>	No further action required.	Aboriginal
12/15/2015	Site Visit	<p>New Gold conducted a site tour for Rainy River First Nations and Naicatchewenin First Nation.</p>	No further action required.	Aboriginal
12/16/2015	Meeting	<p>New Gold met with Naotkamegwanning (Whitefish Bay) First Nation.</p>	<p>Next meeting was scheduled for February 3, 2016.</p>	Aboriginal
12/17/2015	Meeting	<p>New Gold held a meeting with Animakee Wa Zhing 37 First Nation.</p>	<p>Site tour and meeting was scheduled in March 2016.</p>	Aboriginal