

APPENDIX D
CONDITION 4
SUPPORTING DOCUMENTATION

2015 Bird Sweeps

Condition 4.1.2

Date	Location	Results	Action	Cleared Date	Completion
25-May-15	Veert Laydown	No bird nesting activity observed in the area	Work approved	25-May-15	Cleared
26-May-15	PROP15-047	No bird nesting activity observed in this area	Work approved	26-May-15	Cleared
26-May-15	PROP15-002	No bird nesting activity observed in this area	Work approved	26-May-15	Cleared
26-May-15	PROP15-008	No bird nesting activity observed in the area	Work approved	26-May-15	Cleared
3-Jun-15	Continuation of Magazine Road and Emulsion Plant Pad	No bird nesting activity observed in the area	Work approved	3-Jun-15	Cleared
4-Jun-15	AECON Haul Road @ Roen-Clark Connector Intersection	No bird nesting activity observed in the area	Work approved	4-Jun-15	Cleared
4-Jun-15	North side of East end of Roen-Clark Connector @ Clark Road	No bird nesting activity observed in the area	Work approved	4-Jun-15	Cleared
4-Jun-15	PROP15-019	No bird nesting activity observed in the area	Work approved	4-Jun-15	Cleared
4-Jun-15	PROP15-021	No bird nesting activity observed in the area	Work approved	4-Jun-15	Cleared
4-Jun-15	PROP15-026	No bird nesting activity observed in the area	Work approved	4-Jun-15	Cleared
7-Jun-15	Detention Pond and associated pad/access	No bird nesting activity observed in the area	Work approved	7-Jun-15	Cleared
8-Jun-15	AECON Mowing Area Section 2 (South of South West Creek tributary)	No bird nesting activity observed in the area	Work approved	8-Jun-15	Cleared
9-Jun-15	AECON Mowing Area Section 3 (South of AECON Laydown)	No bird nesting activity observed in the area	Work approved	9-Jun-15	Cleared
9-Jun-15	PROP15-044	No bird nesting activity observed in the area	Work approved	9-Jun-15	Cleared
9-Jun-15	PROP15-042	No bird nesting activity observed in the area	Work approved	9-Jun-15	Cleared
9-Jun-15	PROP15-022	No bird nesting activity observed in the area	Work approved	9-Jun-15	Cleared
9-Jun-15	PROP15-032	No bird nesting activity observed in the area	Work approved	9-Jun-15	Cleared
9-Jun-15	PROP15-038	No bird nesting activity observed in the area	Work approved	9-Jun-15	Cleared
10-Jun-15	Veert Laydown Expansion	No bird nesting activity observed in the area	Work approved	10-Jun-15	Cleared
10-Jun-15	AECON Temporary Haul Road Twinning of Roen-Clark Connector to Overburden Stockpile (AECON)	Nest and hatchlings observed ~50m South of Roen-Clark connector	ESA signage placed at 25m buffer around nest and rerouted AECON Temporary Haul Road	19-Jun-15	Cleared
10-Jun-15	Alternative AECON Temprary Haul Road	No bird nesting activity observed in the area	Work approved	10-Jun-15	Cleared
11-Jun-15	PROP15-009	No bird nesting activity observed in the area	Work approved	11-Jun-15	Cleared
11-Jun-15	PROP15-058	No bird nesting activity observed in the area	Work approved	11-Jun-15	Cleared
11-Jun-15	PROP15-056	No bird nesting activity observed in the area	Work approved	11-Jun-15	Cleared
11-Jun-15	PROP15-054	No bird nesting activity observed in the area	Work approved	11-Jun-15	Cleared
11-Jun-15	AECON Mowing Areas Section 4 and 5 (North of North West Creek Tributary)	Nest and eggs observed ~300m East of Roen Road and 5m North of creek	ESA signage placed at 30m buffer around nest and notified contractor of location	24-Jun-15	Cleared
11-Jun-15	West Creek Diversion South of Highway 600	No bird nesting activity observed in the area	Work approved	11-Jun-15	Cleared
15-Jun-15	West Creek Diversion North of Highway 600	No bird nesting activity observed in the area	Work approved	15-Jun-15	Cleared
16-Jun-15	PROP15-054	No bird nesting activity observed in the area	Work approved	16-Jun-15	Cleared
16-Jun-15	PROP15-055	No bird nesting activity observed in the area	Work approved	16-Jun-15	Cleared
16-Jun-15	PROP15-053	No bird nesting activity observed in the area	Work approved	16-Jun-15	Cleared
16-Jun-15	PROP15-052	No bird nesting activity observed in the area	Work approved	16-Jun-15	Cleared
16-Jun-15	New drill access trail	Very high potential for nesting birds - Ideal habitat	Work not approved and flagged off entrance and exit of trail. Original trail to be used by NDC.		Not Cleared
16-Jun-15	Barron Site	Magpie nest observed in trees West of house	No activity noted at time of inspection, continue normal activity as the nest was built with normal level of disturbance	16-Jun-15	Cleared
17-Jun-15	Laydown Area 5	No bird nesting activity observed in the area	Work approved	17-Jun-15	Cleared
17-Jun-15	Laydown Area 2A	No bird nesting activity observed in the area	Work approved	17-Jun-15	Cleared
18-Jun-15	Southeast end of Roen Pit	Bank Swallow nest observed	ESA signage placed at 30m buffer and notified area manager	26-Jun-15	Cleared
22-Jun-15	Georgeson Road - North and South of house	No bird nesting activity observed in the area	Work approved	22-Jun-15	Cleared
23-Jun-15	Laydown 7	No bird nesting activity observed in the area	Work approved	23-Jun-15	Cleared
24-Jun-15	AECON Mowing Area Section 5 (East of AECON Laydown)	No bird nesting activity observed in the area	Work approved	24-Jun-15	Cleared
25-Jun-15	Laydown Area 2A	Snipe nest and eggs observed	ESA signage placed at 30m buffer around nest and notified area manager	16-Jul-15	Cleared
26-Jun-15	PROP15-053	No bird nesting activity observed in the area	Work approved	26-Jun-15	Cleared
26-Jun-15	PROP15-055	No bird nesting activity observed in the area	Work approved	26-Jun-15	Cleared
26-Jun-15	PROP15-058	No bird nesting activity observed in the area	Work approved	26-Jun-15	Cleared
26-Jun-15	PROP15-056	No bird nesting activity observed in the area	Work approved	26-Jun-15	Cleared
26-Jun-15	PROP15-047	No bird nesting activity observed in the area	Work approved	26-Jun-15	Cleared
29-Jun-15	East end of Roen-Clark Connector (AECON culverts)	Sparrow nest and eggs observed in the area - nesting in culvert stacks	ESA signage placed at 20m buffer around nest	19-Jul-15	Cleared
4-Jul-15	Widening of Laydown 7 entrance	No bird nesting activity observed in the area	Work approved	4-Jul-15	Cleared
4-Jul-15	West Creek Diversion - South of Highway 600 to Loslo Creek	No bird nesting activity observed in the area	Work approved	4-Jul-15	Cleared
6-Jul-15	Assembly pad area	No bird nesting activity observed in the area	Work approved	6-Jul-15	Cleared
7-Jul-15	West Creek Diversion - East of Georgeson Road to tree line	No bird nesting activity observed in the area	Work approved	7-Jul-15	Cleared
7-Jul-15	West Creek Diversion - West of Georgeson Road to Highway 600	Ne bird nesting activity observed in the area	Work approved	7-Jul-15	Cleared
7-Jul-15	West Creek Diversion - South of Batch Plant to West Creek Pond	No bird nesting activity observed in the area	Work approved	7-Jul-15	Cleared
7-Jul-15	West Creek Diversion - Stockpile South of Batch Plant	No bird nesting activity observed in the area	Work approved	7-Jul-15	Cleared
7-Jul-15	South access to Roen Pit - Path	No bird nesting activity observed in the area	Work approved	7-Jul-15	Cleared
7-Jul-15	West Creek Diversion - Access trail South of Marr Creek	No bird nesting activity observed in the area	Work approved	7-Jul-15	Cleared

2015 Bird Sweeps

Condition 4.1.2

9-Jul-15	Laydown 16	No bird nesting activity observed in the area	Work approved	9-Jul-15	Cleared
9-Jul-15	Road access East from Batch Plant pad to Roen Pit	No bird nesting activity observed in the area	Work approved	9-Jul-15	Cleared
13-Jul-15	Expanding Barron Site parking lot North to fence line	No bird nesting or amphibian activity observed in the area	Work approved	13-Jul-15	Cleared
16-Jul-15	Haul Road 2 between Laydown Area 14 and Laydown Area 9	No bird nesting activity observed in the area	Work approved	16-Jul-15	Cleared
16-Jul-15	Laydown Area 4	No bird nesting activity observed in the area	Work approved	16-Jul-15	Cleared
20-Jul-15	Haul Road 2 between Laydown Area 9 and Haul Road 1	No bird nesting activity observed in the area	Work approved	20-Jul-15	Cleared
27-Jul-15	West Creek Diversion Haul Road to Laydown 5	No bird nesting activity observed in the area	Work approved	27-Jul-15	Cleared
27-Jul-15	East end of Roen-Clark Connector (AECON culverts)	Active nest observed with hatchlings	ESA signage placed at 20m buffer around nest	15-Aug-15	Cleared
30-Jul-15	West Creek Diversion immediately N of Laydown 5	No bird nesting activity observed in the area	Work approved	30-Jul-15	Cleared
31-Jul-15	S ditch of Teeple Rd W of Heatwole Rd to Heatwole Rd sign	No bird nesting activity observed in the area	Work approved	31-Jul-15	Cleared
4-Aug-15	West Creek Diversion - 40 m East of Georgeson Road	No bird nesting activity observed in the area	Work approved	4-Aug-15	Cleared



**RAINY RIVER PROJECT
VEGETATION CLEARING PLAN
COMPLIANCE REPORT**

**PER PROVINCIAL
NOTICE OF APPROVAL CONDITION 15
EA File No. EA 05-09-02
EAIMS File No. 13102**

VERSION 3

Date	Rev. #	Revision(s)	Originator
May 28	0	Complete draft for internal review	AB/NF
May 30	1	Complete for submission	NF
June 6	2	Update to section 4.6	SJ/NF
June 24	3	Update to 4.6 and table reflecting MOECC comments	NF

May 2015

Principal Contact:

Nigel Fisher
Manager Environment, Rainy River Project
New Gold Inc.
5967 Hwy 11/71, Box 5
Emo, Ontario P0W 1E0
nigel.fisher@newgold.com
Telephone: (807) 482-0951

TABLE OF CONTENTS

1.0 BACKGROUND	4
2.0 REGULATORY FRAMEWORK	6
3.0 CLEARING COMPLETED	7
4.0 CONDITION 15 COMPLIANCE	9
4.1 Preparation of a vegetation clearing plan and communication of the plan	9
4.2 Compliance monitoring for vegetation clearing activities	10
4.2.1 Identification of Compliance Requirements	10
4.2.2 Communication of Requirements	10
4.2.3 Checking for Compliance	10
4.2.4 Follow Up	12
4.3 Compliance reporting for Vegetation Clearing activities	12
4.4 Complaint protocol for vegetation clearing activities	12
4.5 Community notification for vegetation clearing activities	13
4.6 Consultation with Aboriginal Communities for vegetation clearing activities	13
4.7 Terrestrial systems and habitat monitoring for vegetation clearing activities	14
4.8 Disclosure of condition 15	17
4.9 Mandatory amendments to clearing plan	17
4.10 Completion of clearing plan, as amended by the Director	17
4.11 Availability of documentation	17
4.12 Reference clearing plan conditions in other materials, as appropriate	17
5.0 SUMMARY OF COMPLIANCE WITH EA CONDITION 15	17
6.0 REFERENCES	19

LIST OF TABLES

Table 1: Start and Completion Dates for the Clearing Activities Conducted.....	7
Table 2: Comparison to the Estimated Area and Actual Area Cleared	7
Table 3: Steps Taken in Meeting EA Commitments Applicable during Clearing	14
Table 4: Summary of Compliance with Provincial EA Approval Condition 15.....	17

LIST OF FIGURES

Figure 1: Site Plan, Rainy River Project.....	5
Figure 2: Areas Cleared in 2015 Q1	8

LIST OF APPENDICES

A	Rainy River Project Commitments Registry – Excerpts related to clearing
B	Clearing Photos

1.0 BACKGROUND

New Gold Inc. (NG; formerly Rainy River Resources Limited) is planning to construct, operate and eventually reclaim a new open pit and underground gold mine, the Rainy River Project (RRP), to produce doré bars (gold with silver) for sale.

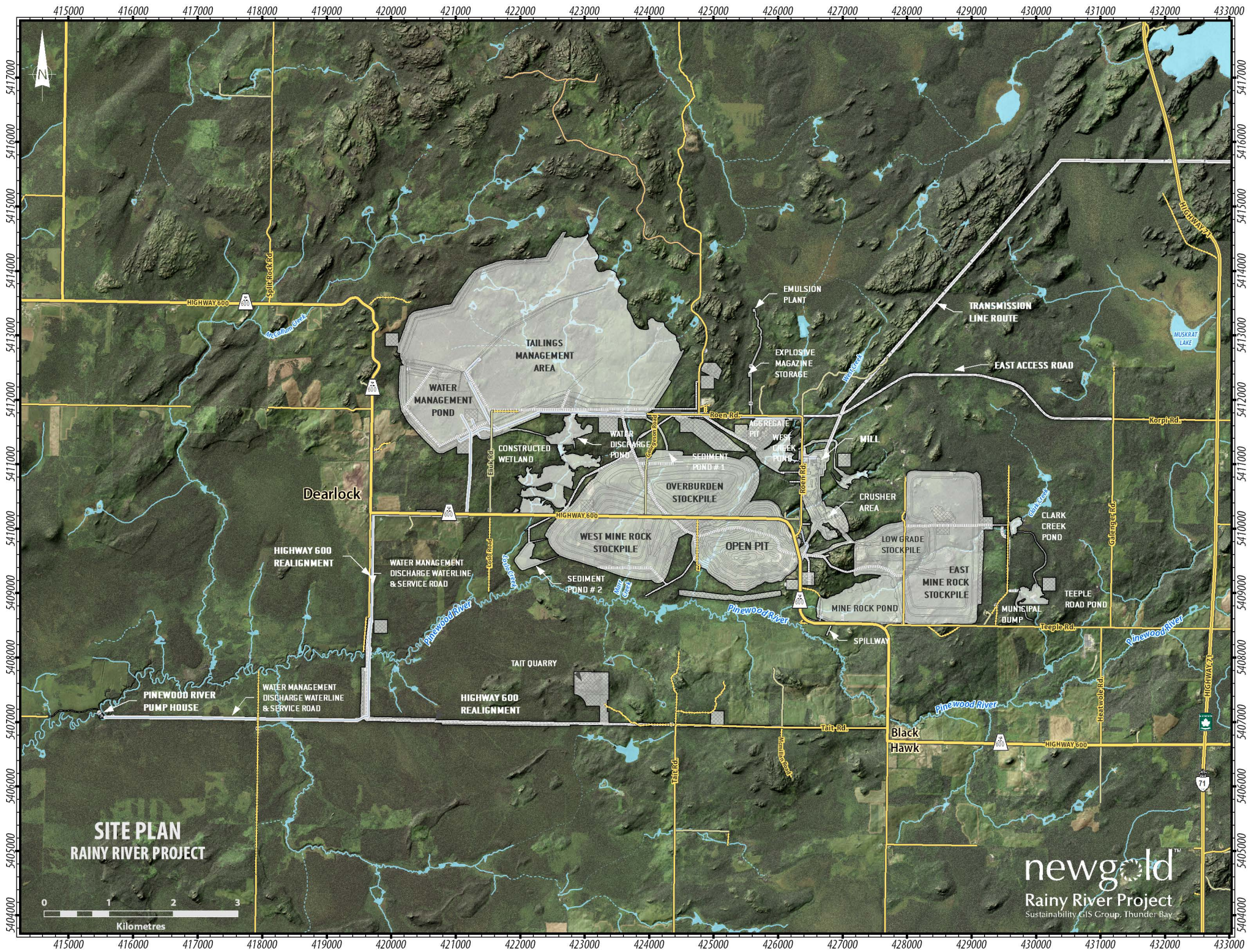
Physical works related to the RRP will consist primarily of;

- Open pit;
- Underground mine;
- Overburden, mine rock and low grade ore stockpiles;
- Primary crusher and process plant;
- Tailings management area;
- 230 kilovolt transmission line;
- Relocation of a portion of gravel-surfaced Highway 600; and
- Associated buildings, facilities and infrastructure, supported by related piping and power infrastructure as needed.

Figure 1 on the following page shows the site plan.

Following the approval of the Provincial Environmental Assessment on January 28, 2015, New Gold planned and initiated vegetation clearing activities in order to remove breeding bird habitat prior to the nesting period (1 May to 15 Aug). This clearing will allow site construction activities within cleared areas to occur during the nesting period. Clearing work was completed in a manner consistent with section 15 of the Provincial EA approval conditions including the approved Vegetation Clearing Plan, which described how New Gold was to conduct initial vegetation clearing activities intended to occur on the site before May 1, 2015.

This report is has been prepared in fulfillment of EA approval condition 15.3 in that it describes and provides evidence of compliance with Condition 15 and is being submitted to the Director within 30 days of completing vegetation clearing activities. This includes all sections of Condition 15 and cross referenced plans including fulfillment of EA commitments with regard to wildlife habitat and terrestrial systems.



**SITE PLAN
RAINY RIVER PROJECT**



newgold™
Rainy River Project
Sustainability GIS Group, Thunder Bay

2.0 REGULATORY FRAMEWORK

The following regulatory aspects applicable to the clearing activities conducted to May 1, 2015 include;

- Environmental assessment approval conditions (provincial and federal)
- Endangered Species Act approval FF-C-001-14
- Forest Licences and approvals: B12014/216557 and 553145/216310
- Authorities to Haul: 553037, 553038 and B12009
- Land Use Permits: 1134-1003163 and 1134-1003164
- Other legislation as applicable e.g., *Forest Fire Prevention Act*
- Best Management Practices including;
 - Ministry of Natural Resources (MNR). 1988. Timber Management Guidelines for the Protection of Fish Habitat.
 - Ministry of Natural Resources (MNR). 1995. Forest Operations and Silviculture Manual, First Edition.
 - Ministry of Natural Resources (MNR). 2010. Forest Management Guide for Conserving Biodiversity at the Stand and Site Scales
 - Ontario Sustainable Forestry Initiative Implementation Committee. 2011. A Guide to Best Management Practices for Forest Operations in Northern Ontario for Private Landowners and Logging Contractors.

NG volunteered to be subject to an individual EA under the Ontario *Environmental Assessment Act*. On January 17, 2014, NG submitted documentation intended to fulfill the EA requirements as defined by the Provincially-approved Terms of Reference and Federal Environmental Impact Statement Guidelines: AMEC. 2014. Rainy River Project, Township of Chapple, Final Environmental Assessment Report (Environmental Impact Statement), Version 2. Prepared for Rainy River Resources Ltd.

As part of the provincial EA approval, condition 15 required New Gold to develop a vegetation clearing plan and requirements relating to the following (Notice of Approval for EA File 05-9-02, January 28, 2015);

1. Preparation of a vegetation clearing plan and communication of the plan
2. Compliance monitoring for vegetation clearing activities
3. Compliance reporting for Vegetation Clearing activities
4. Complaint protocol for vegetation clearing activities
5. Community notification for vegetation clearing activities
6. Consultation with Aboriginal Communities for vegetation clearing activities
7. Terrestrial systems and habitat monitoring for vegetation clearing activities
8. Disclosure of condition 15
9. Mandatory amendments to clearing plan
10. Complete of clearing plan, as amended by the Director
11. Availability of documentation
12. Reference clearing plan conditions in other materials, as appropriate

In order to conduct clearing, additional permits were issued e.g., under the *Endangered Species Act*, but do not form part of this report except where there is an overlap with an applicable EA approval condition related to clearing.

3.0 CLEARING COMPLETED

Clearing took place between February 28, 2015 and April 30, 2015 consistent with the method outlined in the Approved Vegetation Clearing Plan for Initial Clearing Prior to May 1, 2015 (the Plan) (Version 3, February 21, 2015). Figure 2, on the following page, demonstrates where the clearing occurred.

Start and completion dates for the clearing activities for the main clearing areas are provided in Table 1. All clearing activities ceased in advance of 1 May 15. Work was performed by New Gold as well as contractors. During clearing an additional 9.15 ha was permitted for clearing associated with the plant site and water pipeline. The area cleared was consistent with estimate area to be cleared and within the expected error of sampling (Table 2).

Table 1: Start and Completion Dates for the Clearing Activities Conducted

Clearing Area	Start Date	Completion Date
Water Management Pond, mine rock pond and low grade stockpile pond	28-Feb-15	20-Apr-15
Highway 600 realignment, pipeline and pumphouse	28-Feb-15	22-Apr-15
Organic stockpile and haul roads South of Roen Rd	28-Feb-15	30-Mar-15
Clark Creek and Teeple Ponds and diversion channels	5-Mar-15	19-Apr-15
West mine rock stockpile and associated haul roads	11-Mar-15	5-Apr-15
Mill and crusher	28-Mar-15	23-Apr-15
East Access Road	28-Mar-15	21-Apr-15
Roen pit	26-Mar-15	27-Apr-15
West Creek Pond and diversion	20-Mar-15	30-Apr-15
Tait Quarry	25-Apr-15	29-Apr-15

Table 2: Comparison to the Estimated Area and Actual Area Cleared

Clearing Type	Estimated Area (ha)	Area Cleared (ha)
Forested	459	-
Non-forested	166	-
Additional	9	-
Logged	As determined in the field	93
Mulched		224
Cleared		419
Total		643*

*excludes logged areas as these were assumed mulched or cleared post logging

Logging, mulching, clearing and stripping were used to clear the site. Stripping (and root mat removal) was limited to the Highway 600 realignment and the East Access Road. Root mat removal was required to meet Ministry of Transportation requirements and associated Ontario Provincial Standards and Specifications prior to the construction of these roads. Limiting the stripping provided a means of reducing the effort required in manage erosion and sediment thereby increasing environmental protection. Prior to stripping material was mulched or logged and accounted for in Table 2 above.

Where logging occurred merchantable-marketable timber use was maximised and hauled to the Ainsworth mill under MNRF authorizations 553037, 553038 and B12009 for a total of 6,300 m³ comprising of; 1800 m³ Spruce, 4500 m³ Poplar, 500 m³ Red Pine and 500 m³ Balsam. The amount of merchantable-marketable timber hauled to the mill was less than the 11,027 m³ (+/- 15 %) estimated. This resulted from no market being identified for cedar, a change in access to protect Species at Risk and site access conditions limiting the marketability of the wood.

Non-merchantable and merchantable-nonmarketable debris was windrowed and mulched. This material will be comingled with overburden during stripping and stockpiling of areas through the construction phase. The mulched fibre was left on the ground to be removed with overburden during stripping and stockpiling of areas through the construction phase.

Clearing was conducted using excavators, dozers, flails, hydro-axes and hand saws. The method of clearing varied depending on the nature of vegetation to be cleared, topography, ground conditions and the proximity to sensitive receptors e.g., watercourses. Hand clearing was conducted for vegetation within 5 m of the high water mark and in places out to 20 m to protect the integrity of the riparian zone to the extent possible.

4.0 CONDITION 15 COMPLIANCE

New Gold completed clearing work in a manner consistent with section 15 of the Provincial EA approval conditions including the approved Vegetation Clearing Plan, as evidenced in the subsections below. These measures included preparation and communication of the plan as well as a complaint protocol, community notification and Aboriginal consultation, compliance monitoring, and compliance reporting.

4.1 Preparation of a vegetation clearing plan and communication of the plan

The Vegetation Clearing Plan was prepared to communicate how clearing would be conducted and initially submitted to MNRF as Version 0 on January 16, 2015. The initial submission and revisions through to Version 2 were provided more than 15 days prior to the commencement of clearing on February 28, 2015 as required under EA condition 15.1. Through a series of meetings and discussions the document was revised to reflect the comments received and the plan finalized as Version 3 on February 21, 2015. The V2 of the plan was posted on New Golds website on February 12, 2015, 16 days prior to the commencement of clearing and subsequently updated.

4.2 Compliance monitoring for vegetation clearing activities

The following subsection documents compliance monitoring conducted with respect to EA commitments related to Vegetation Clearing including proposed mitigation, commitments made in the vegetation clearing plan. Other subsections document, as applicable to the subsection compliance with other conditions included in section 15 of the notice of EA approval.

The process for compliance monitoring followed four primary steps; identification of compliance requirements, communication of those requirements, checking that the requirements were being met and follow/up actions, if required.

4.2.1 Identification of Compliance Requirements

Compliance requirements were listed in the EA approval(s), permits, legislation and vegetation clearing plan (Version 3). EA conditions pertaining to clearing were included in the vegetation clearing plan for completeness. The BMPs listed in the Plan were reviewed and used where applicable, noting this was not a forestry operation but a clearing plan for mining development.

4.2.2 Communication of Requirements

The communication of requirements was conducted through the following mechanisms;

- Project orientation for all persons working on the Project;
- Clearing kick off meeting with crews and contractors to review the Vegetation Clear Plan
- Preparation and distribution of toolbox summaries of the Plan for use at toolbox meetings and reference in the field
- Establishment of processes to meet commitments e.g., map enabled GPS, flagging of boundaries and sensitive areas such as West Creek

4.2.3 Checking for Compliance

A total of 27 formal inspections were completed by NG environmental staff during vegetation clearing, at an approximate average interval of once every other day during clearing activities. However, the frequency of inspection was varied based on the activities being undertaken and the potential for environmental effects. Formal inspections were substituted with additional informal observations and discussions by NG environmental staff and crews during clearing. Formal inspections used checklists developed to demonstrate compliance or highlight areas for improvement.

Results from the compliance monitoring indicated clearing generally consistent with the Vegetation clearing plan including;

- Vegetation retention – staying within clearing boundaries
 - Only areas within the footprint of the project or required for the construction of the

project were cleared consistent with the approved clearing limits.

- Root mat removal was limited to the east access road and Highway 600 realignment as required for the construction method. In both these cases stockpiling of debris was such it could be maintained and reused to support reclamation
- Maximise fibre utilisation and minimizing waste of wood
 - 6,300 m³ of wood was hauled under licence to the mill
 - No part cut trees were observed during inspections and where logging occurred stumps were taken to no more than 30 cm e.g., Tait Quarry
 - Remaining wood waste was windrowed for mulching or mulching consistent with the plan e.g., West Creek diversion and Roen pit
- Minimising impact to riparian environments
 - Riparian areas were flagged with a minimum 5 m set back from water courses
 - Vegetation in the riparian area not required for the development of the project was retained and where vegetation was cleared the root mat was retained. This includes stockpile pond area where grasses and shrubs were retained in some areas and the root mat retention led to regeneration of grasses in other areas including where minor disturbance of mineral soil occurred
 - Cleared vegetation was generally kept 5 m back from the high water mark of water courses, this was confirmed by a number of inspections specifically in riparian areas
 - No evidence of natural stream flow diversion, impediment or acceleration was observed throughout clearing
 - Fuel handling followed the clearing plan and fuelling/vehicle maintenance took place at least 50 m from watercourses as confirm by inspections and the absence of any spills in the riparian area
 - Spill kits and secondary containment were typically present during inspections
- Minimising sedimentation and erosion
 - Clearing was conducted, to the extent possible, during favourable ground conditions, and where this wasn't possible alternative methods were used
 - Hand clearing within 5 m of all water courses and up to 20 m from water courses depending on site conditions e.g., in West Creek pond in late April
 - Modification of clearing practice i.e., use of alternate equipment when approaching water courses
 - Standard sediment and erosion control practices (silt fence, mulching and erosion blanket) were applied in the following areas as a result of an exposure of mineral soil; stockpile pond, West Creek and pond pump house access road. Ongoing inspections and maintenance of the applied sediment and erosion control measures have demonstrated their effectiveness.
 - Access was managed to limit the number of access to work areas e.g., a single access was used to log and clear the water management pond and separately for Tait Quarry

4.2.4 Follow Up

Follow up action and feedback was provided in areas where opportunities for improvement were identified or modifications were made to meet commitments. This included riparian management, sediment and erosion control fuel management and forest fire management.

Riparian management was conducted as outlined in the previous section. Depending on the nature of channel around which the riparian area had developed and the method of clearing there was a potential for wood waste to be deposited below the high water mark or disturbance to mineral soil. Therefore changes were made in places to the clearing method/equipment used including in some cases requiring hand falling out to 20 m from the high water mark of water courses. Riparian vegetation that, despite efforts to the contrary, fell within the high water mark were removed e.g., a tree from the realigned highway 600 crossing of the Pinewood River.

Through planning and clearing practices sediment and erosion control measures were applied as described above. However, physical sediment and erosion control measures were applied as a result of changing field conditions and exposure of mineral soils. Changes to clearing practices were made to reduce the risk of erosion and sedimentation through minimising the exposure of mineral soils e.g., in stockpile pond and west creek pond areas.

Inspections regarding fuel management identified limited concerns regarding secondary containment, presence of spill kits and spills. In all follow up cases corrections were made within the same shift if not immediately. There were no spills of sufficient volume to require external reporting under Ontario Reg 675/98. When spills occurred they were reported to site environmental staff, assessed for potential environmental effect and cleaned up successfully with the material disposed of in an appropriate manner. The internal spills reporting procedure was updated during clearing to support spill reduction and identify root cause which was effective in reducing the number of spills.

Consistent with the clearing plan, waste vegetation and organic material was pushed to the boundary of some of the cleared areas e.g., organic stockpile, west creek diversion. The intent is that this is a temporary measure and future work is planned to ensure compliance with the *Forest Fires Prevention Act* i.e., piling, chipping or burning of organic material will be completed. Further, through construction in 2015 the chip piles on the plant site will be spread.

4.3 Compliance reporting for Vegetation Clearing activities

The provincial EA condition 15.3 is addressed by this report in describing and providing evidence of compliance with condition 15.

4.4 Complaint protocol for vegetation clearing activities

A complaint protocol outlining how inquiries and complaints received during the clearing would be handled was included in the Vegetation Clearing Plan as posted to the New Gold website and is currently available (New Gold website as accessed May 23, 2015). A telephone and email contact

information were provided. The protocol for handling complaints included a response from the General Manager or designate, development of corrective actions and a follow up process to determine the effectiveness of the follow up actions. No complaints were received through the complaint protocol during clearing activities or subsequent relating to clearing activities.

4.5 Community notification for vegetation clearing activities

Notifications were sent via email to interested parties, as listed below, per the Community Communications Plan developed from Condition 8 of the Notice of Approval. Notification were sent on February 13, 2015, fifteen days prior to the commencement of clearing which included a link to the vegetation clearing plan and an invitation to comment on the plan.

private citizen – name withheld by New Gold	Township of LaVallee
private citizen – name withheld by New Gold	Lake of the Woods Township
private citizen – name withheld by New Gold	Township of Morley
private citizen – name withheld by New Gold	Natural Resources Advisory Committee
private citizen – name withheld by New Gold	Ontario Federation of Anglers and Hunters
Town of Emo	Rainy Lake Conservancy
Township of Chapple	Rainy River District Stewardship Council
Township of Sioux Narrows-Nestor Falls	Rainy River Future Development Corp.
Town of Fort Frances	Resolute Forest Products
Town of Rainy River	Rainy River Soil and Crop Improvement Association
Town of Atikokan	Fort Frances Sportsmen's Club
Township of Alberton	

New Gold received one comment with respect to the Plan. An adjacent landowner requested clarification on a property boundary as it related to a clearing boundary. The comment was received through the comment email address February 21, 2015 and addressed by the Manager of Community Relations on March 11, 2015. In a follow up conversation more information was provided and the landowner was satisfied with New Gold's response.

4.6 Consultation with Aboriginal Communities for vegetation clearing activities

The clearing plan was sent to Aboriginal Communities as identified in the EA approval condition 9.4, and all other Aboriginal Communities New Gold continues to engage with. This notification was sent on February 13, 2015

On February 13, 2015, notifications were sent via email to the Aboriginal Communities listed in section 9.4 of the Notice of Approval, and in addition it was sent to all other communities that NG continues to engage with. These are listed below.

Chief Carl Tuesday	Big Grassy First Nation
Chief Will Windigo	Nigigoonsiminikaaning
Chief Patricia Big George	Anishinaabeg of Naongashiing First Nation
Chief Norman Jordan	Lac La Croix First Nation
Chief Jim Leonard	Rainy River First Nations
Chief Janice Henderson	Mitaanjigamiing First Nation
Chief Kathy Kishiqueb	Ojibways of Onigaming First Nation
Chief Earl Klyne	Seine River First Nation
Chief Howard Kabestra	Nautkamegwanning First Nation
Chief John Thunder	Buffalo Point First Nation
Chief Wayne Smith	Naicatchewenin First Nation
Chief Aileen Oshie-White	Northwest Angle No. 37 First Nation
Chief Sara Mainville	Couchiching First Nation
Chief Darlene Comegan	Northwest Angle No. 33 First Nation
Chief Chris Skead	Anishinabe of Wauzhushk Onigum
Dean McMahon	Sunset Country Metis

One comment was received, from Nautkamegwanning First Nation via letter on February 23, 2015 expressing concern regarding fulfillment of EA commitments and notification. This comment was addressed through New Gold postponing the commencement of clearing allowing Nautkamegwanning to conduct a ceremony at the Gallinger Road ceremony site on February 26, 2015. This was the second pre-clearing ceremony with a site pre-clearing blessing ceremony held on February 6, 2015 at the Marr Site location. All Aboriginal groups were invited to attend. The ceremony was officiated by a community Elder of Rainy River First Nations.

4.7 Terrestrial systems and habitat monitoring for vegetation clearing activities

Condition 15.7 of the provincial EA approval required New Gold to meet its EA commitments during clearing activities and to rehabilitating wildlife habitat and terrestrial systems. Table 3 describes steps taken in meeting commitments applicable at this stage of the project and for the scope of the clearing activities i.e., excludes transmission commitments and habitat rehabilitation.

Table 3: Steps Taken in Meeting EA Commitments Applicable at this during Clearing

Environmental Assessment Commitment and steps taken in meeting commitments	Commitment ID
Clearing of forests having a density of at least 10 cavity trees per hectare with a diameter at breast height greater than 25 cm will be limited to outside of the bat roosting season (April 1 to November 15) unless cleared by a bat biologist that has surveyed the trees for bat activity. – <i>in review of habitat on the site this is not applicable as these types of habitat are not present at the Project</i>	87
A more detailed wildlife follow-up monitoring plan will be developed through consultation with the MNR and EC. As suggested by the reviewer, additional control	92

Environmental Assessment Commitment and steps taken in meeting commitments	Commitment ID
sites around the periphery of the mine footprint can be developed and monitored following mine construction and periodically throughout mine operations. A draft plan will be issued to MNR and EC prior to commencement of construction. NG will provide opportunities to Aboriginal groups to participate in the development of the plan. - <i>NG submitted a draft wildlife monitoring plan on January 22, 2015 to MNRF. Subsequently MNRF, EC and NG have met and at time of report preparation and the monitoring plan is being revised prior to further distribution and consultation.</i>	
Maintenance to the extent practical of a 120 m buffer zone adjacent to rivers and creeks to protect watercourses and their associated vegetated margins; - <i>clearing was limited to what was required for project construction and operations. In order to construct the project this included clearing within 120 m of West, Clark and Marr creeks for site infrastructure and the Pinewood River for the pumphouse and Hwy 600 realignment.</i>	95
Restricting the clearing of terrestrial amphibian breeding habitats to periods outside the amphibian breeding season as directed by the MNR; - <i>clearing was limited to outside the breeding bird window which is concurrent with the amphibian breeding window, clearing ceased prior to May 1, 2015</i>	96
Scheduling of RRP development activities will consider environmental aspects, such as fish spawning and bird nesting seasons. Tree and woodland clearing will be restricted to periods outside of the breeding bird season (May 1 to August 15). Clearing or modification of known Trumpeter Swan breeding habitat will be restricted to outside the breeding season (March 15 to August 15). - <i>clearing was limited to outside the breeding bird window and ceased prior to May 1, 2015</i>	98, 101, 102, 110, 112, 113
<ul style="list-style-type: none"> • Inclusion of wildlife awareness information into regular safety and environmental inductions performed by the mine. Wildlife sighting logs or information boards will be installed to notify workers of local observations. Workers will be made aware of seasonal changes in local animal behaviour or presence in proximity to the mine; - <i>Wildlife awareness information is provided to staff and contractors as part of their site orientation and is also delivered via daily notices and meetings as seasonal changes occur or increase in presence of wildlife is noted.</i> • Minimizing the level of potentially disturbing activities near any known or subsequently discovered active raptor and raven nest sites until the nest is vacated; - <i>no new raptor or raven nests were identified during clearing activities through either site inspections or field observations</i> • Annual monitoring of the Bald Eagle nest in Woodland 122 to determine seasonal eagle activity at the nest site which will guide RRP activities occurring in proximity to the nest. Should eagles continue to use the nest site and raise offspring, work will be adjusted appropriately to reduce adverse effects to the breeding success of the local pair; - <i>The identified Bald Eagle nesting location ('Woodland 122') southeast of the project footprint was monitored beginning in March 2015 for occupancy and a breeding pair was noted to be present through March and April. No clearing related activities occurred in proximity to this nest.</i> 	101

Environmental Assessment Commitment and steps taken in meeting commitments	Commitment ID
<p>Monitoring of key terrestrial systems and SAR: during the construction and operations phase, with post closure habitat development and utilization by wildlife to continue at reduced frequencies consistent with SAR Permit requirements; <i>The following steps were taken relating to terrestrial systems and SAR;</i></p> <ul style="list-style-type: none"> • <i>Wildlife and SAR awareness is a part of site orientation presentations provided as a condition of site access to all staff/contractors</i> • <i>responsibilities of individuals to report sightings - no SAR sighting reports were made during clearing activities</i> • <i>Toolbox talks were given regarding SAR species</i> • <i>Signage was posted identifying SAR habitats to be protected</i> • <i>Offset habitat was placed for barn swallows in 4 locations as discussed with MNRF</i> • <i>Development and implementation of the terrestrial monitoring plan including wildlife logs which recorded 102 wildlife observations of which 71 % were deer, 9 % avian species and 20 % furbearers (primarily wolf and skunk). There were no apparent patterns to the wildlife data and no SAR observations.</i> • <i>Implementation of a site wide 60 kph speed limit, 20 kph below provincial highway 600 speed to reduce collisions with wildlife – no wildlife road mortalities were observed or reporting</i> 	109
<p>Maintenance of forest buffers between RRP components and whip-poor-will nesting and foraging habitat where practical; - <i>clearing was limited to what was required for project construction and operations consistent with the permit conditions</i></p> <p>Management of dust through dust suppression activities (best management practices);- <i>dust suppression was applied through an MOECC approved dust suppression agent, calcium chloride, along Roen and Tait roads and Highway 600.</i></p>	110
<p>Where NG has control, commercially reasonable efforts will be made to work with Resolute, MNR and local loggers to facilitate the use of merchantable timber by local mills, in recognition of the importance of mills to the local economy. – <i>6,300 m3 of merchantable and marketable wood was hauled to a mill as a result of clearing activities</i></p>	140
<p>All NG staff will undergo cultural awareness training. Temporary contractors will undergo an awareness program as part of the regular induction program when working at the mine (Letter to Chiefs from Kyle Stanfield, October 2013). This will ensure that people that work at the site are aware of indigenous culture and values, and are respectful of the principles and values of the Ojibwe people. – <i>Cultural awareness is being conducted and scheduled for new workers at the Project as available through the provider. A total of 61 persons received the training as of April 30, 2015.</i></p>	167
<p>NG will commit to clearing of flammable debris within a minimum 30 m buffer area. – <i>this commitment is being addressed consistent with the vegetation clearing plan; temporary wood waste piles at the boundary of clearing will be managed consistent with the Forest Fire Prevention Act</i></p>	201

4.8 Disclosure of condition 15

In submission of the Vegetation Clearing Plan a statement was appended indicating that its submission is intended to fulfil Condition 15 of this Notice of Approval (Page 2 of Version 3 of the Vegetation Clearing Plan).

4.9 Mandatory amendments to clearing plan

No amendments were received regarding the Vegetation Clearing Plan following completion of Version 3.

4.10 Completion of clearing plan, as amended by the Director

No amendments to the clearing plan were completed because as noted above no amendments were received. The clearing was completed as described in the sections above.

4.11 Availability of documentation

Documentation regarding the Vegetation Clearing Plan is available to the Ministry, or designated, as requested. To date no requests for documentation have been received.

4.12 Reference clearing plan conditions in other materials, as appropriate

At the time of report preparation, vegetation clearing activities have not been mentioned in other materials produced in fulfilment of provincial EA approval conditions. However, as the project proceeds reference to vegetation clearing is expected in relevant materials.

5.0 SUMMARY OF COMPLIANCE WITH EA CONDITION 15

The following table summarises the description of and evidence provided in this report in compliance with condition 15 of the provincial EA approval.

Table 4: Summary of Compliance with Provincial EA Approval Condition 15

Condition ID	Condition	Compliance Summary
15.1	Preparation of a vegetation clearing plan and communication of the plan	NG along with MNRF completed a vegetation clearing plan to outline the methods by which clearing was permitted to occur prior to May 1, 2015.
15.2	Compliance monitoring for vegetation clearing activities	Through the identification of requirements, communication of requirements, formal inspections and observations and follow up

Condition ID	Condition	Compliance Summary
		compliance monitoring was completed.
15.3	Compliance reporting for Vegetation Clearing activities	The provincial EA condition 15.3 is addressed by this report in describing and providing evidence of compliance with condition 15.
15.4	Complaint protocol for vegetation clearing activities	A compliant protocol was developed by NG and implemented for use in conjunction with the clearing plan.
15.5	Community notification for vegetation clearing activities	Notification was provided 15 days prior to the start of clearing activities 15 days prior to the start of clearing. One question was received from a landowner which was addressed.
15.6	Consultation with Aboriginal Communities for vegetation clearing activities	Notification was provided 15 days prior to the start of clearing as outlined in the plan. Comment was received from Naotkamegwanning and address through delaying clearing allowing for a ceremony to be conducted
15.7	Terrestrial systems and habitat monitoring for vegetation clearing activities	Consistent with the EA commitments and conditions, where applicable to clearing and the phase of the project, terrestrial systems were monitored including dust management, wildlife logs, orientations to personnel and field observations.
15.8	Disclosure of condition 15	In submission of the Vegetation Clearing Plan a statement was appended indicating that its submission is intended to fulfil Condition 15 of this Notice of Approval (Page 2 of Version 3 of the Vegetation Clearing Plan).
15.9	Mandatory amendments to clearing plan	No amendments were received regarding the Vegetation Clearing Plan following completion of Version 3.
15.10	Complete of clearing plan, as amended by the Director	No amendments to the clearing plan were completed because as noted above no amendments were received. The clearing was completed as described in the sections above.
15.11	Availability of documentation	Documentation regarding the Vegetation Clearing Plan is available to the Ministry, or designated, as requested. To date no requests for documentation have been received.
15.12	Reference clearing plan conditions in other materials, as appropriate	At the time of report preparation, vegetation clearing activities have not been mentioned in other materials produced in fulfilment of provincial EA approval conditions. However, as

Condition ID	Condition	Compliance Summary
		the project proceeds reference to vegetation clearing is expected in relevant materials.

6.0 REFERENCES

- AMEC 2013. Rainy River Resources Ltd. Rainy River Project 2013 Terrestrial Baseline Study: Bats.
- AMEC 2015. Rainy River Project Vegetation Clearing Plan for Initial Clearing Prior to May 1, 2015.
- OPSS 804 Construction Specifications for Seed and Cover
- OPSS 805 Construction Specifications for Temporary Erosion and Sediment Control Measures
- OPSS .MUNI 182 General Specifications for Environmental Protection for Construction in Waterbodies and on Waterbody Banks

APPENDIX A

RAINY RIVER PROJECT COMMITMENTS REGISTRY (VER. 12) – EXCERPTS

Commitments / Mitigation Specifically Related to Clearing / Rehabilitation of Habitat and Terrestrial Systems

#	Environmental Assessment Commitments / Mitigation Specifically Related to Clearing / Rehabilitation of Habitat and Terrestrial Systems	Project Phase
72	<p>Related to the transmission line:</p> <ul style="list-style-type: none"> • Tree stumps, root mats and ground vegetation cover will be left intact to reduce the potential for surface erosion and to help maintain groundcover for plant and wildlife habitat (CL); • Vegetation (shrub) screens will be left to the extent practical along the single creek crossing that exists between Beadle and Preachers Lake, near the east end of the alignment, for erosion protection, while ensuring clearance requirements for conductors (CL); • No in-water work will be conducted and all poles will be placed above the high water mark; • Industry standard sediment interception and erosion control practices will be applied wherever appropriate / needed (CL); • Should any erosion of the ground be identified at the end of the construction period (or during any intervening inspections), the exposed area would be re-seeded or otherwise stabilized to control erosion until native vegetation takes hold. If the erosion is more severe, other methods such as placement of straw matting or equivalent will be used (CL); • Where required in larger quantities, construction materials will be stored a minimum distance of 200 m from any open (non-frozen) surface water, and from major access points; and • Fuelling and maintenance of vehicles will not occur within 50 m of surface waterbodies (CL). 	C
85	<p>The principal mitigation measures that are proposed to limit short and long term adverse effects to local vegetation communities include:</p> <ul style="list-style-type: none"> • Minimizing dust production along primary mine rock and overburden transportation routes by implementing dust suppression methods and thereby minimizing the zone of influence. Primary dust suppression methods will include road watering. • Annual monitoring of dust deposition on vegetation adjacent to mine roads; and • Active revegetation and encouragement of natural revegetation / recolonization of disturbed areas as part of progressive reclamation during operation and active reclamation at mine closure. 	C,O,D
86	<p>In regards to the transmission line:</p> <ul style="list-style-type: none"> • Additional rare plant and breeding bird surveys to be undertaken in May and June, 2014 to identify any further potential environmental constraints that might require construction modification, such avoidance of disruption to rare plant sites (if present) through site specific habitat protection measures; • Undertaking transmission line construction in winter (normally December 1 to March 31) to better protect ground cover in sensitive areas where the protection of wetlands, rare plants and SAR is required, and completion of the remainder of transmission line construction in the late summer and fall, outside of the breeding bird season (CL); • Vegetation removal will be reduced to the extent necessary to support construction activities and longer-term transmission line reliability (from interference with conductors and fall of adjacent hazard trees). Minimizing vegetation removal includes retaining existing low vegetation ground cover (CL); • Access to the right of way (ROW) will be provided from existing infrastructure (some of which may need to be upgraded, as reasonable for personnel, material and equipment access), but no new permanent access roads are proposed. Generally, where access is poor, the ROW will be accessed along the ROW itself. Construction vehicles will not be allowed to travel through surface waters; and • Mechanical means will be used for periodic vegetation height maintenance along the transmission line, instead of herbicides. 	E,C
87	<p>Scheduling of RRP development activities will consider environmental aspects. Clearing of forests having a density of at least 10 cavity trees per hectare with a diameter at breast height greater than 25 cm will be limited to outside of the bat roosting season (April 1 to November 15) unless cleared by a bat biologist that has surveyed the trees for bat activity (CL). Timing of the transmission line construction will be planned to avoid the breeding bird and main tourist season, as possible.</p>	E,C,O

Rainy River Project

Vegetation Clearing Plan Compliance Report

Provincial Environmental Assessment Notice of Approval, Condition 15

Version 1

#	<i>Environmental Assessment Commitments / Mitigation Specifically Related to Clearing / Rehabilitation of Habitat and Terrestrial Systems</i>	Project Phase
95	<p>The primary mitigation strategies for limiting adverse effects to wildlife will include:</p> <ul style="list-style-type: none"> • Preventing hunting from occurring on all lands owned by NG (required for the safety of workers; this is currently ongoing during exploration as well); • <i>Maintenance to the extent practical of a 120 m buffer zone adjacent to rivers and creeks to protect watercourses and their associated vegetated margins (CL);</i> • <i>Restoration of disturbed habitats at closure, including the development of habitats capable of supporting a diversity of wildlife species, including ungulates, large predators, furbearers and bats (CL);</i> • Enforcement of speed limits along proposed mine access roads to reduce the potential for collisions with ungulates. Signs warning drivers of the possibility of wildlife encounters will be posted in areas of high wildlife activity. A log of collisions will be kept to monitor the effectiveness of the proposed mitigation and additional mitigation measures will be implemented if necessary; • Inclusion of wildlife awareness information into regular safety and environmental inductions performed by the mine. Workers and contractors will be made aware of seasonal changes in local deer or large mammal behaviour or presence in proximity to the mine. Workers and contractors will be made aware of seasonal changes in local mammal behaviour or presence in proximity to the mine; • Treatment of the tailings slurry to levels equal to or less than 1 mg/L weak acid dissociable cyanide before deposition in the tailings management area (which is well below the 50 mg/L weak acid dissociable cyanide threshold criteria outlined by the International Cyanide Management Code); • Fencing the tailings management area to prevent access; • Covering the exposed tailings beach at closure with a layer of overburden and flooding the remaining tailings with a layer of water to prevent the tailings from oxidizing over the longer term. This will ensure that the tailings pond waters remain of high quality, such that they will not pose a threat to wildlife. The margins of the tailings pond will develop as wetland habitat; • Minimizing dust production along primary haulage routes by implementing dust suppression methods and thereby minimizing the RRP zone of influence; and • Disposing of food wastes generated on site in a manner that limit the attraction of wildlife, such as Black Bear and wolves. 	E,C,O,D

Rainy River Project

Vegetation Clearing Plan Compliance Report

Provincial Environmental Assessment Notice of Approval, Condition 15

Version 1

#	<i>Environmental Assessment Commitments / Mitigation Specifically Related to Clearing / Rehabilitation of Habitat and Terrestrial Systems</i>	Project Phase
96	<p>Mitigation measures that will be used to reduce potential adverse effects to amphibians will include the following:</p> <ul style="list-style-type: none"> • Development of a compact RRP site to reduce overall habitat loss and to limit potential adverse effects related to sound emissions to the extent practical; • <i>Restricting the clearing of terrestrial amphibian breeding habitats to periods outside the amphibian breeding season as directed by the MNR (CL);</i> • Implementation of sound abatement strategies to dampen sound infiltrating habitats surrounding high traffic areas of the mine; • Enforcement of speed limits along proposed mine access roads to reduce the potential adverse effects of increased vehicular traffic associated with the RRP. Signs warning drivers of the possibility of wildlife encounters will be posted in areas of high wildlife activity. A log of collisions will be kept to monitor the effectiveness of the proposed mitigation and additional mitigation measures will be implemented if necessary; • If frog mortality on roadways is found to be a problem along mine access roads or the re-aligned Highway 600, silt fencing may be installed to prevent frogs from crossing the road and may direct them to the nearest culvert(s); • Inclusion of wildlife awareness information into regular safety and environmental inductions performed by the mine. Workers and contractors should continually be made aware of seasonal changes in local wildlife behaviour or presence in proximity to the mine; • Treatment of tailings slurry containing cyanide and associated heavy metals from the ore leaching process in the process plant using the SO₂/Air process before being discharged to the tailings management area; • Discharge of effluent that will result in protection of aquatic life standards in the Pinewood River so that no adverse water quality effects to amphibians are anticipated; • Maintenance of generally abiotic conditions within the tailings management area to discourage wildlife presence; and • Covering the exposed tailings beach at closure with a layer of overburden and flooding the remaining tailings with a layer of water to prevent the tailings from oxidizing over the longer term. This will ensure that the tailings pond waters remain of high quality such that they will not pose a threat to wildlife. Margins of the tailings pond will be developed into wetland habitat. 	E,C,O,D
98	<i>Scheduling of RRP development activities will consider environmental aspects, such as fish spawning and bird nesting seasons. Tree and woodland clearing will be restricted to periods outside of the breeding bird season (May 1 to August 15). Clearing or modification of known Trumpeter Swan breeding habitat will be restricted to outside the breeding season (March 15 to August 15) (CL).</i>	C

Rainy River Project

Vegetation Clearing Plan Compliance Report

Provincial Environmental Assessment Notice of Approval, Condition 15

Version 1

#	<i>Environmental Assessment Commitments / Mitigation Specifically Related to Clearing / Rehabilitation of Habitat and Terrestrial Systems</i>	Project Phase
101	<p>The primary mitigation strategies for limiting adverse effects to birds and habitat:</p> <ul style="list-style-type: none"> • Inclusion of wildlife awareness information into regular safety and environmental inductions performed by the mine. Wildlife sighting logs or information boards will be installed to notify workers of local observations. Workers will be made aware of seasonal changes in local animal behaviour or presence in proximity to the mine; • Minimizing the level of potentially disturbing activities near any known or subsequently discovered active raptor and raven nest sites until the nest is vacated; • Annual monitoring of the Bald Eagle nest in Woodland 122 to determine seasonal eagle activity at the nest site which will guide RRP activities occurring in proximity to the nest. Should eagles continue to use the nest site and raise offspring, work will be adjusted appropriately to reduce adverse effects to the breeding success of the local pair; • Maintenance of a safe distance between RRP activities and the nest as well as maintenance of landscape buffer areas (preferably forested or natural) between the activity and nest trees. To avoid disturbing nesting Bald Eagles, no buffer is necessary around nest sites outside of the breeding season once the juvenile eagles are known to have vacated the defined significant wildlife habitat; • Limiting less typical activities in proximity to the nest site during the nest building and breeding season. The local eagle pair appears tolerant of agricultural activities and road grading; • Environmental induction programs and ongoing environmental updates provided to workers will make them aware of Bald Eagle nesting activities prior to the commencement of new or irregular activities in proximity to an active eagle nest (within 500 m), and having them observe proper protocol in order to avoid disturbance during these activities; • <i>Restriction of tree and woodland clearing to periods outside of the breeding bird season which extends between May 1 and August 15 (CL);</i> • Protection of suitable breeding habitat as a result of the provision of compensatory habitat for species protected under the <i>Endangered Species Act</i>; • <i>Restoration of disturbed habitats at closure to habitats capable of supporting a diversity of wildlife species;</i> • Implementation of sound abatement strategies; • Enforcement of speed limits along proposed mine access roads to reduce the potential adverse effects of increased vehicular traffic associated with the RRP. Signs warning drivers of the possibility of wildlife encounters will be posted in areas of high wildlife activity. A log of collisions will be kept to monitor the effectiveness of the proposed mitigation and additional mitigation measures will be implemented if necessary; • <i>Restrictions to clearing or modification of known Trumpeter Swan breeding habitat to outside the breeding season (March 15 to August 15) to prevent the disturbance of nesting swans or impact the likelihood of cygnet survival (CL);</i> • (Cont'd) 	E,C,O,D
101	<p>(Cont'd)</p> <ul style="list-style-type: none"> • Disposing of food wastes generated on site in an appropriate manner that limits the attraction of wildlife, including Common Ravens, Turkey Vultures and Bald Eagles; • Timely removal of carcasses of road-killed animals or any other carcasses found onsite to limit the attraction of wildlife, such as Common Ravens and Turkey Vultures; and • Treatment of tailings slurry containing cyanide and associated heavy metals from the ore leaching process in the process plant using the SO₂/Air process before being discharged to the tailings management area; and • Creation of generally abiotic conditions within the fenced tailings management area during operations to limit the interest of the pond to waterfowl. 	E,C,O,D

Rainy River Project

Vegetation Clearing Plan Compliance Report

Provincial Environmental Assessment Notice of Approval, Condition 15

Version 1

#	Environmental Assessment Commitments / Mitigation Specifically Related to Clearing / Rehabilitation of Habitat and Terrestrial Systems	Project Phase
102	<p>In regards to the transmission line:</p> <ul style="list-style-type: none"> • Additional rare plant and breeding bird surveys to be undertaken in May and June, 2014 to identify any further potential environmental constraints that might require construction modification, such avoidance of disruption to rare plant sites (if present) through site specific habitat protection measures; • Tree clearing to take place outside of the breeding bird nesting season, defined as the period from May 1 to July 31 (CL); • Undertaking transmission line construction in winter (normally December 1 to March 31) to better protect ground cover in sensitive areas where the protection of wetlands, rare plants and SAR is required, and completion of the remainder of transmission line construction in the late summer and fall, outside of the breeding bird season; • Direct impacts to raptor nesting areas will be avoided. There are currently no stick nests on or near the proposed ROW. Should any stick nests be identified during construction, the area will be avoided until a qualified avian biologist can be contacted for direction; • Conductor wire separation distances will be sufficiently far apart to preclude larger avian species, particularly raptors which frequently use hydro pole for perching or nesting, from electrocution by contacting two conductor wires simultaneously; • Construction crews will be advised not to interfere with or harass wildlife. No hunting or fishing by construction crews will be allowed. Disciplinary actions will be taken should either occur; and • Contractors will be required to handle food and food wastes in a responsible manner, and to educate workers to ensure no feeding of wildlife. 	E,C
103	<p><i>The site will be rendered suitable for other compatible land uses and functions after the mine has closed and the land has been reclaimed. NG will encourage and, as practical, actively restore the RRP site to productive, naturalized vegetation communities on cessation of mining capable of supporting a diversity of wildlife species. RRP revegetation efforts at closure will include providing suitable habitat for SAR species, most notably whip-poor-will, and other species of interest, if practical.</i></p>	D,P
109	<p><i>Monitoring of key terrestrial systems and SAR: during the construction and operations phase, with post closure habitat development and utilization by wildlife to continue at reduced frequencies consistent with SAR Permit requirements (CL)</i></p>	C,O,D

Rainy River Project

Vegetation Clearing Plan Compliance Report

Provincial Environmental Assessment Notice of Approval, Condition 15

Version 1

#	Environmental Assessment Commitments / Mitigation Specifically Related to Clearing / Rehabilitation of Habitat and Terrestrial Systems	Project Phase
110	<p>Mitigation measures that will be used to reduce potential adverse effects to Eastern Whip-poor-will will include the following:</p> <ul style="list-style-type: none"> • Provision of compensatory whip-poor-will habitat that protects known territories and other identified suitable habitat; • Restricting the clearing of habitats to periods outside the breeding bird season which occurs from May 1 to August 15 (CL); • Implementation of sound abatement strategies to dampen sound infiltrating habitats surrounding high traffic areas of the mine; • Where feasible, management of site lighting fixtures to reduce excess light production near whip-poor-will foraging areas so as to minimize disturbing these nocturnal birds (with all appropriate health and safety issues considered); • Maintenance of forest buffers between RRP components and whip-poor-will nesting and foraging habitat where practical (CL); • Management of dust through dust suppression activities (best management practices) (CL); • Enforcement of speed limits along mine-controlled roads to reduce the potential adverse effects of increased vehicular traffic associated with the RRP. Signs warning drivers of the possibility of wildlife encounters will be posted in areas of high wildlife activity. A log of collisions will be kept to monitor the effectiveness of the proposed mitigation and additional mitigation measures will be implemented if necessary; • Environmental induction of RRP personnel, including SAR identification and sensitivities, and knowledge of <i>Endangered Species Act</i> permit conditions; • Implementation of a monitoring plan for Eastern Whip-poor-will populations and nesting in proximity to the proposed mine and transmission line sites, within compensatory habitat areas and in appropriate control areas; and • Continue funding external research programs in collaboration with the MNR in order to further our understanding of this poorly studied species, as part of a larger overall benefits compensation package required by the <i>Endangered Species Act</i> permit. 	E,C,O,D
111	<p>The primary mitigation strategies for limiting adverse effects to Bobolink will include:</p> <ul style="list-style-type: none"> • Restricting the development of open country habitats to periods outside the breeding bird season which occurs from May 1 to July 31; • Acquiring and protecting compensatory open country breeding bird habitat suitable for Bobolink breeding at a ratio of 1:1 for open-country habitat removed for RRP development; • Enforcement of speed limits along mine controlled roads to reduce the potential adverse effects of increased vehicular traffic associated with the RRP. Signs warning drivers of the possibility of wildlife encounters will be posted in areas of high wildlife activity. A log of collisions will be kept to monitor the effectiveness of the proposed mitigation and additional mitigation measures will be implemented if necessary; • Environmental induction of RRP personnel, including SAR identification and sensitivities and knowledge of <i>Endangered Species Act</i> permit conditions; • Implementation of sound abatement strategies to dampen sound infiltrating habitats surrounding high traffic areas of the mine; • Restoration of disturbed habitats at mine closure or encouraging development of habitats capable of supporting Bobolink and other open country species; and • Implementation of a monitoring plan for Bobolink populations and nesting in proximity to the proposed mine site within compensatory habitat areas, and in appropriate control areas. 	E,C,O,D

Rainy River Project

Vegetation Clearing Plan Compliance Report

Provincial Environmental Assessment Notice of Approval, Condition 15

Version 1

#	Environmental Assessment Commitments / Mitigation Specifically Related to Clearing / Rehabilitation of Habitat and Terrestrial Systems	Project Phase
112	<p>Mitigation measures that will be used to reduce potential adverse effects to Barn Swallows will include the following:</p> <ul style="list-style-type: none"> • Identification of Barn Swallow nesting colonies prior to mine construction; • Restricting habitat displacement for mine infrastructure to periods outside the breeding bird season which occurs from May 1 to August 15 (CL); • Creation of artificial nesting structures to encourage recolonization or new colonization by Barn Swallows in areas where farm structures are removed; • Restoration of disturbed habitats at closure or encouraging development of habitats capable of providing suitable Barn Swallow foraging habitat; • Sound abatement strategies will be implemented to dampen sound infiltrating habitats surrounding high traffic areas of the mine; • Establishment of zones where Barn Swallow colonization is desired, tolerated or not wanted. These measures may be necessary to prevent colonization in areas of high human or vehicular activity that would put swallows and swallow breeding success at risk or where order and cleanliness are desired. In this case, discouraging tactics may be implemented to discourage colonization. Conversely, protection may be provided to swallows nesting in other locations where their presence is encouraged and does not cause problems to mine operations; • Enforcement of speed limits along mine controlled roads to reduce potential adverse effects of increased vehicular traffic associated with the RRP. Signs warning drivers of the possibility of wildlife encounters will be posted in areas of high wildlife activity. A log of collisions will be kept to monitor the effectiveness of the proposed mitigation and additional mitigation measures will be implemented if necessary; and • Implementation of a monitoring plan for Barn Swallow populations in proximity to the proposed mine and transmission line sites and in appropriate control areas. 	E,C,O,D
113	<p>Mitigation measures that will be used to reduce potential adverse effects to all species of Special Concern and Provincially rare species will include the following:</p> <ul style="list-style-type: none"> • Restriction of principal habitat displacement for mine infrastructure to periods outside the breeding bird season which MNR has indicated occurs from May 1 to August 15 (CL); • Implementation of sound abatement strategies to dampen sound infiltrating habitats surrounding high traffic areas of the mine; • Where feasible, RRP lighting fixtures will be directed in such a fashion as to reduce excess production of light to the surrounding environment. • Establishment of zones where Black-billed Magpie colonization is desired, tolerated, or not wanted. These measures may be necessary to prevent colonization in areas of high human vehicular activity that could put magpie and magpie breeding success at risk. Discouraging tactics may be implemented to discourage colonization. Conversely, protection may be provided to magpies nesting in other locations where their presence is encouraged and does not cause problems to mine operations. • Enforcement of speed limits along mine controlled roads to reduce the potential for adverse effects of increased vehicular traffic associated with the RRP. Signs warning drivers of the possibility of wildlife encounters will be posted in areas of high wildlife activity. A log of collisions will be kept to monitor the effectiveness of the proposed mitigation and additional mitigation measures will be implemented if necessary; • Inclusion of wildlife awareness information into regular safety inductions performed by the mine. Workers will be made aware of seasonal changes in wildlife behaviour or presence in proximity to the mine; • Treatment of tailings slurry containing cyanide and associated heavy metals in the process plant using the SO₂/Air process before being discharged to the tailings management area; and • Restoration of disturbed habitats at closure including the development of habitats capable of supporting a diversity of wildlife species, including Species of Special Concern and rare species. 	E,C,O,D

Rainy River Project

Vegetation Clearing Plan Compliance Report

Provincial Environmental Assessment Notice of Approval, Condition 15

Version 1

#	Environmental Assessment Commitments / Mitigation Specifically Related to Clearing / Rehabilitation of Habitat and Terrestrial Systems	Project Phase
135	<p>Related to the transmission line:</p> <ul style="list-style-type: none"> • Compensation will be provided for merchantable timber value where applicable (CL); • Maintain transmission line set back distances of not less than 100 m from area lakes to provide effective visual screening from open waters (CL); • Landscape screening to minimize the contrast in landscape character; for example by leaving shrub cover vegetation that will not affect the conductors (i.e., the wire) in the ROW at creek crossings (CL); and • Minimizing land use conflicts and concerns by consulting with other users and stakeholders (i.e., Aboriginal peoples, hunters, trappers, outdoor recreationalists) to identify and implement other means of conflict resolution. 	E,C,O
140	Where NG has control, commercially reasonable efforts will be made to work with Resolute, MNR and local loggers to facilitate the use of merchantable timber by local mills, in recognition of the importance of mills to the local economy (CL).	E,C
150	NG will ensure that safe access to properties is maintained during the construction and operation phases of the project. Once detailed plans are progressed, NG would welcome the opportunity to discuss further.	E,C,O
167	<p>NG has committed to ensure that First Nations (including Rainy River First Nations, Naicatchewenin First Nation, Big Grassy River First Nation, Big Island First Nation, Naotkamegwaning First Nation, and Ojibways of Onigaming First Nation) and Métis community members have the:</p> <ul style="list-style-type: none"> • Ability to access the site for cultural and ceremonial purposes, so that local Aboriginal people can undertake ceremonies at different times of the year to show respect for the land and its spiritual aspects. • All NG staff will undergo cultural awareness training. Temporary contractors will undergo an awareness program as part of the regular induction program when working at the mine (Letter to Chiefs from Kyle Stanfield, October 2013). This will ensure that people that work at the site are aware of indigenous culture and values, and are respectful of the principles and values of the Ojibwe people (CL). <p>This mitigation has been identified as a result of the Draft EA independent First Nation review and agreed to by NG. NG will follow up directly with the BGRFN regarding any additional mitigation and accommodation measures.</p>	E,C,O,D,P
177	A targeted site investigation will be conducted at the end of mine life to identify soils that may have been affected by hydrocarbons or chemicals in specific areas (e.g. truck refuelling area). Soil materials found to exceed the appropriate clean up criteria for hydrocarbons will be remediated according to government requirements. If there is reason to suspect an area of soil has been affected by chemicals other than hydrocarbons, soil samples will be collected and tested. If the applicable regulatory requirements are exceeded, an appropriate method of disposal will be sought in consultation with the relevant authorities.	O,D

Rainy River Project

Vegetation Clearing Plan Compliance Report

Provincial Environmental Assessment Notice of Approval, Condition 15

Version 1

#	Environmental Assessment Commitments / Mitigation Specifically Related to Clearing / Rehabilitation of Habitat and Terrestrial Systems	Project Phase
197	<p>Related to transmission line construction, environmental monitoring will include (but will not be limited to) inspection of:</p> <ul style="list-style-type: none"> • ROW to ensure excessive vegetation clearing is not conducted; • Appropriateness of equipment choice and maintenance of equipment to minimize environmental impacts; • Effectiveness of erosion control measures where applicable (CL); • Construction activities and equipment operation, including refueling exercises (CL); • Waste management, including wood waste from clearing and domestic wastes (CL); • Monitoring of remedial actions associated with malfunctions and accidents (if any); and • Any requirements contained in environmental approvals and permits required to construct the transmission line. <p><i>At a minimum, weekly inspections by a qualified person will occur of worksites and related areas, during clearing of the ROW and construction of the transmission line. Contractors will be required to have properly trained personnel to provide guidance to construction teams in the absence of the qualified environmental persons. The results of the inspections will be documented and follow-up actions, if any, delineated. Completion of follow-up actions will be confirmed during subsequent inspections. Inspection frequency will be increased should the need be identified (CL).</i> The duration of post-construction inspections, will depend on the results of the construction inspection. At a minimum, periodic aerial inspection will occur for environmental aspects during operation, coincident with other aerial surveys.</p>	C
201	NG will commit to clearing of flammable debris within a minimum 30 m buffer area. (CL)	E,C,O

Commitment numbering relates to the Commitments Registry.

E: Engineering and procurement; C: Construction; O: Operations; D: Decommissioning and active closure; P: Post active closure

(CL) Commitments that will specifically be met during clearing activities. All commitments listed will be implemented by NG and/or its designated representatives / contractors.

Rainy River Project

Vegetation Clearing Plan Compliance Report

Provincial Environmental Assessment Notice of Approval, Condition 15

Version 1

APPENDIX B

Clearing Photos

Rainy River Project

Vegetation Clearing Plan Compliance Report

Provincial Environmental Assessment Notice of Approval, Condition 15

Version 1



Highway 600 Re-alignment looking north towards the pinewood river showing root mat removal and side cast for the highway alignment and mulching of wood for the pipeline alignment to the west



Plant Site looking north towards the East Access Road showing mulched wood piles

Rainy River Project

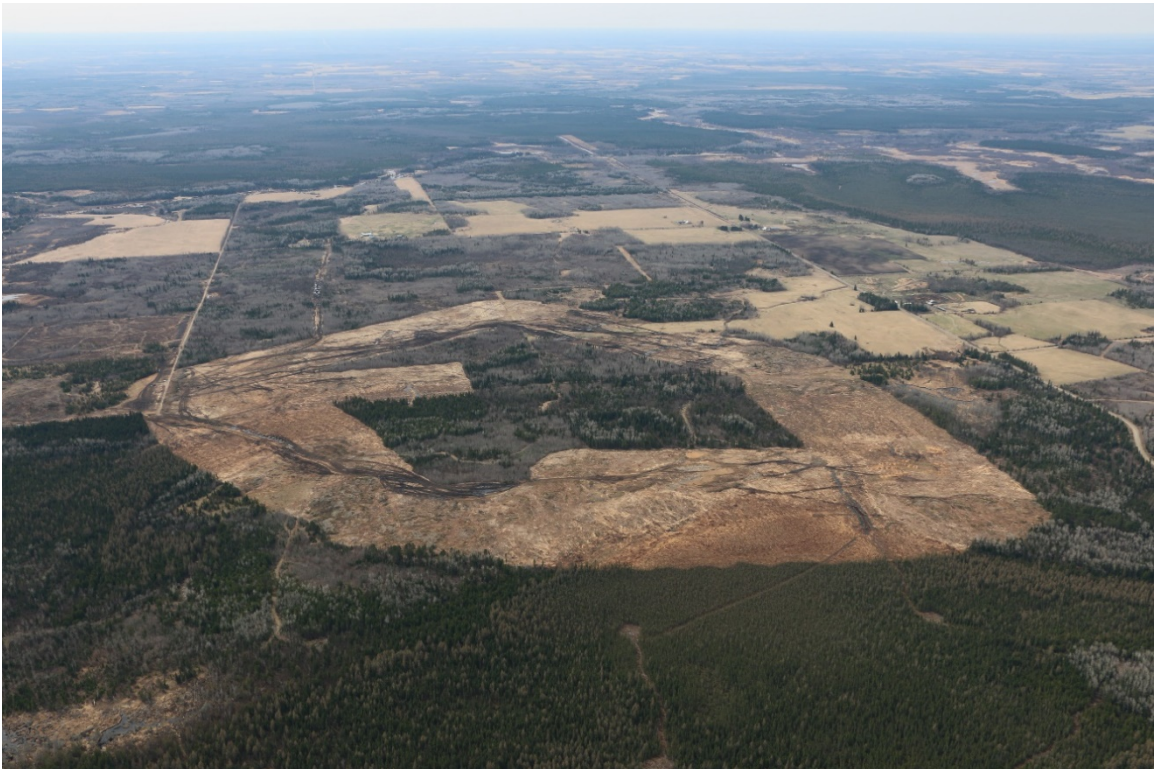
Vegetation Clearing Plan Compliance Report

Provincial Environmental Assessment Notice of Approval, Condition 15

Version 1



Pumphouse Location and water pipeline from the Pinewood River



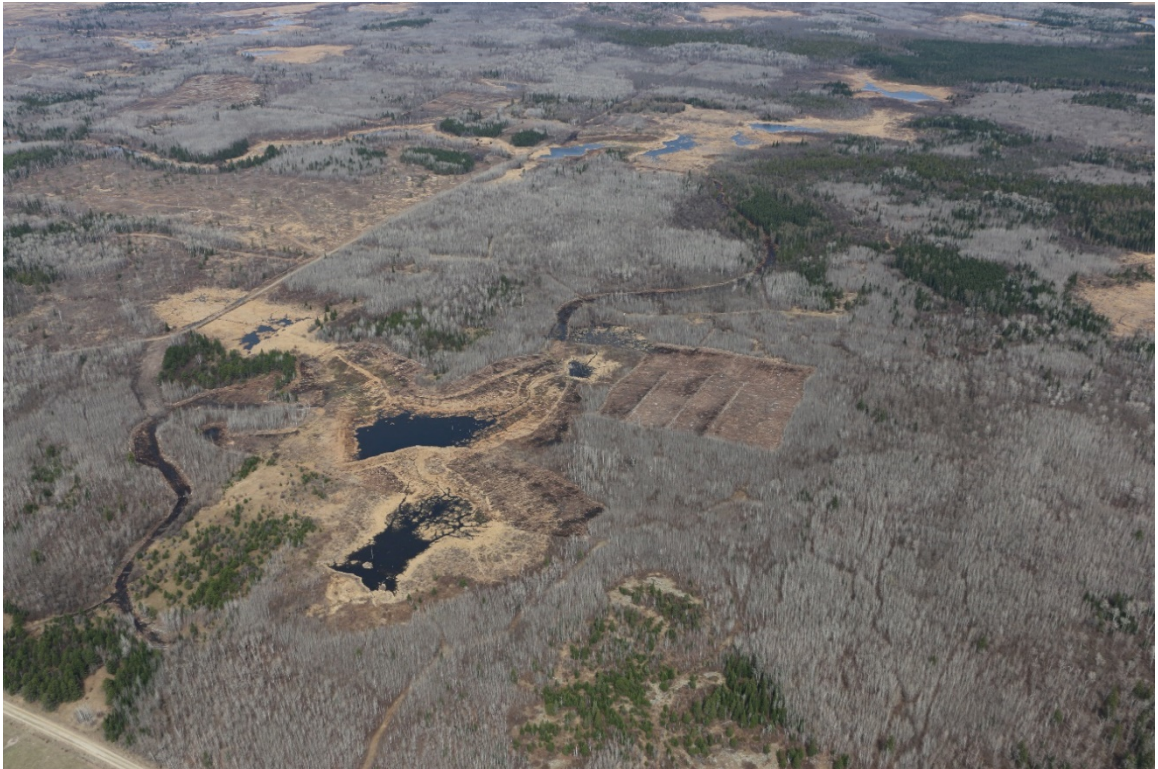
Water Management Pond which was the primary area of logging activity

Rainy River Project

Vegetation Clearing Plan Compliance Report

Provincial Environmental Assessment Notice of Approval, Condition 15

Version 1



Clark Pond and Teeple Pond looking north-north-west



Roen Pit, West Creek Pond, organics and plant site in background showing mulched piles, clearing boundaries and mineral soil protection through vegetation retention

Rainy River Project

Vegetation Clearing Plan Compliance Report

Provincial Environmental Assessment Notice of Approval, Condition 15

Version 1



Mine Rock Pond with cleared perimeter and vegetation retention around Clark Creek.



Mine Rock Pond Clearing and protection of mineral soils within the riparian area of Clark Creek

Rainy River Project

Vegetation Clearing Plan Compliance Report

Provincial Environmental Assessment Notice of Approval, Condition 15

Version 1



Standard sediment and erosion control measures including erosion blanket, check dams, sumps and silt fence



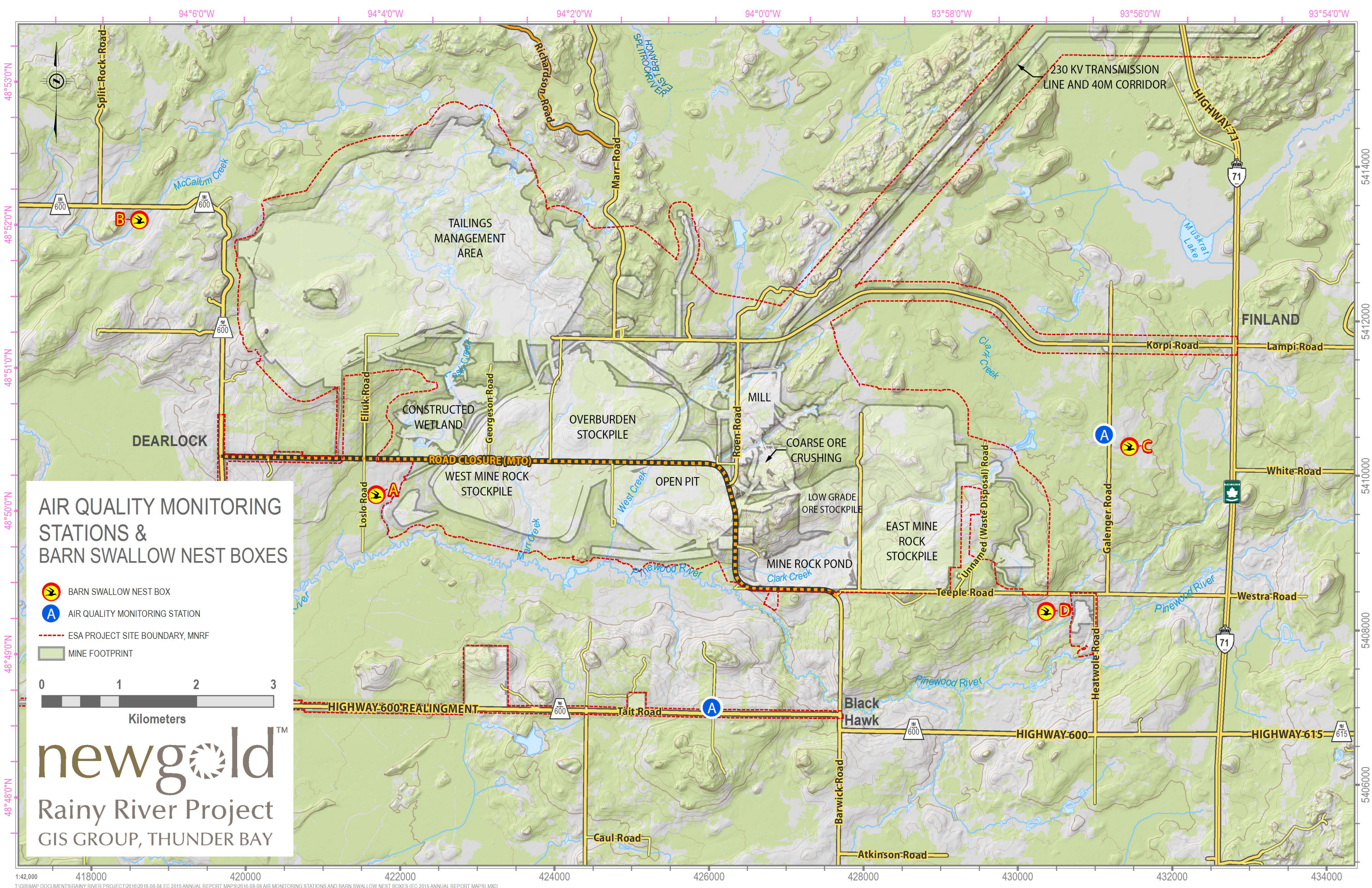
East Access Road Clearing looking east from Roen Road showing mulched wood waste

Rainy River Project





Vegetation Clearing Plan Compliance Report

Provincial Environmental Assessment Notice of Approval, Condition 15

Version 1



AIR QUALITY MONITORING STATIONS & BARN SWALLOW NEST BOXES

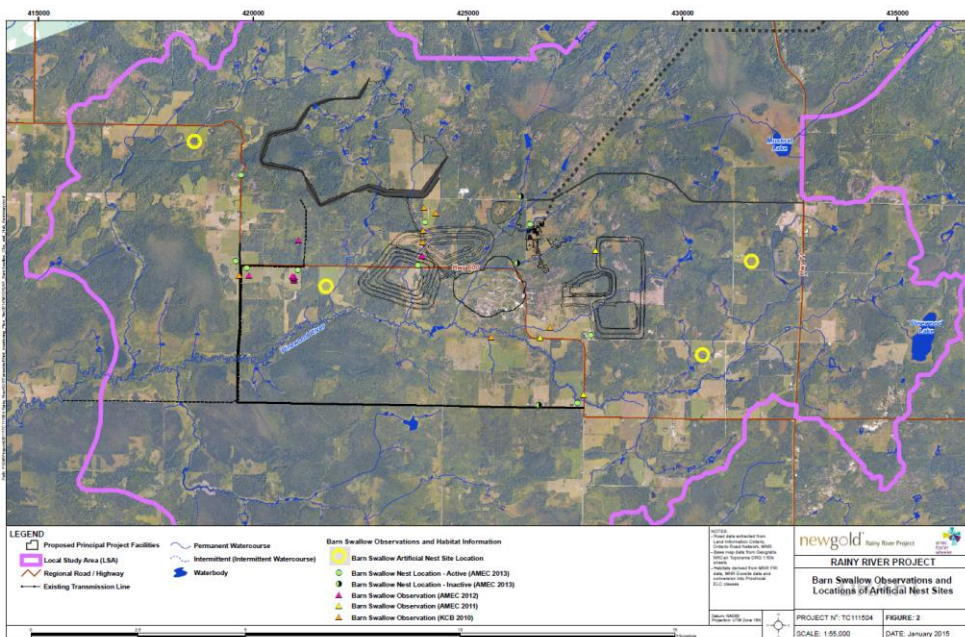
-  BARN SWALLOW NEST BOX
-  AIR QUALITY MONITORING STATION
-  ESA PROJECT SITE BOUNDARY, MNRF
-  MINE FOOTPRINT



newgoldTM
Rainy River Project
GIS GROUP, THUNDER BAY



Barn Swallow Nest Boxes (4)



BASW Nest Box Locations